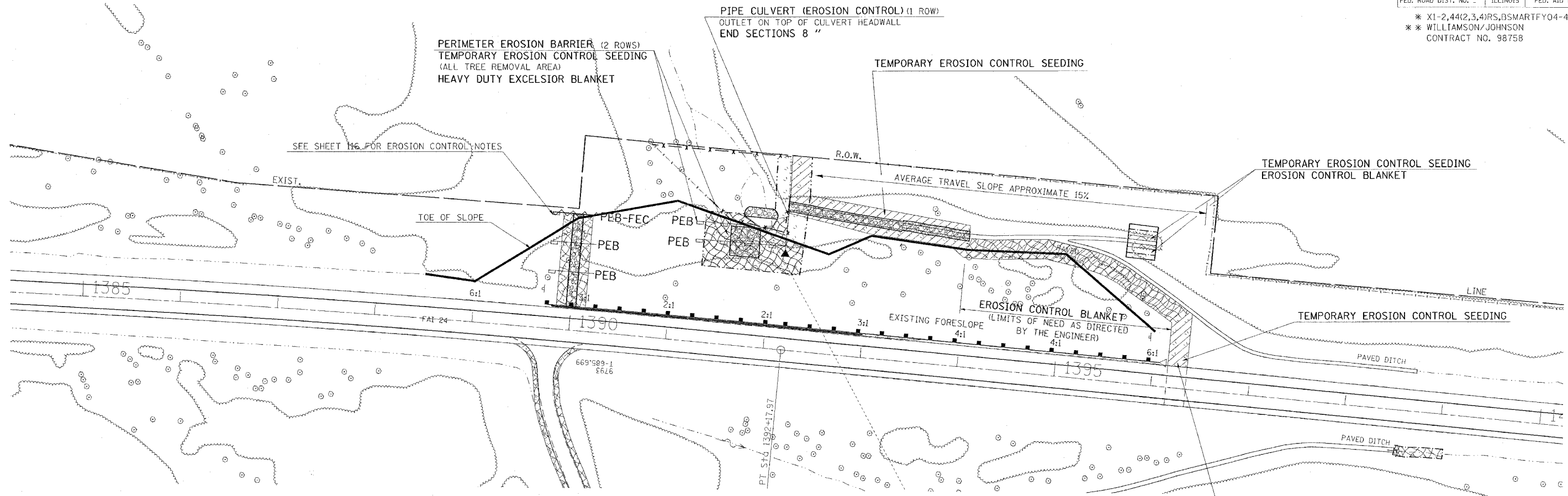


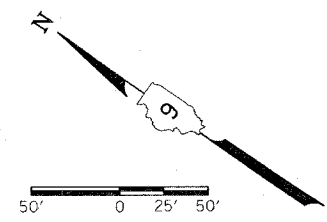
F.A.L. RTE	SECTION	COUNTY	TOTAL SHEETS	SHEET NO.
24	*	**	189	125
STA.		TO STA.		
FED. ROAD DIST. NO. -		ILLINOIS	FED. AID PROJECT	

* X1-2,44(2,3,4)RS,BSMARTFY04-4
 ** WILLIAMSON/JOHNSON
 CONTRACT NO. 98758



NOTE: FOR WINGWALL AND SCOUR REPAIR DETAILS, SEE SHEETS 165-166B

ACCESS POINT
 AREA ADJACENT TO EXISTING PAVED DITCH TO BE USED TO TRAVERSE THE SLOPE TO OBTAIN ACCESS TO THE CULVERT AS DIRECTED BY THE ENGINEER.
 THE EXISTING PAVED DITCH CAN BE TRAVERSED WHEN NECESSARY IN THE STONE RIPRAP DITCH REGION.
 THE LIMITS OF THE TEMPORARY ACCESS SHALL BE RESEEDED WITH BOTH TEMPORARY EROSION CONTROL SEEDING AND SEEDING CLASS 2 (MODIFIED). ALL AREAS WITHIN THE LIMITS OF THE TEMPORARY ACCESS WHICH HAVE EXPOSED EARTH OR TRANSVERSE GRADES GREATER THAN 15% IF DISTURBED, WILL ALSO REQUIRE EROSION CONTROL BLANKET. ANY ADJUSTMENTS IN PLAN QUANTITY FOR EROSION CONTROL BLANKET OR IN THE LIMITS OF TEMPORARY ACCESS SHALL BE AT THE APPROVAL OF THE ENGINEER.



08/03 FEBRUARY 25, 2005 AFTERNOON
 T003 D902102/WEST124-3.dgn
 T2003

Rev. 3-2-05