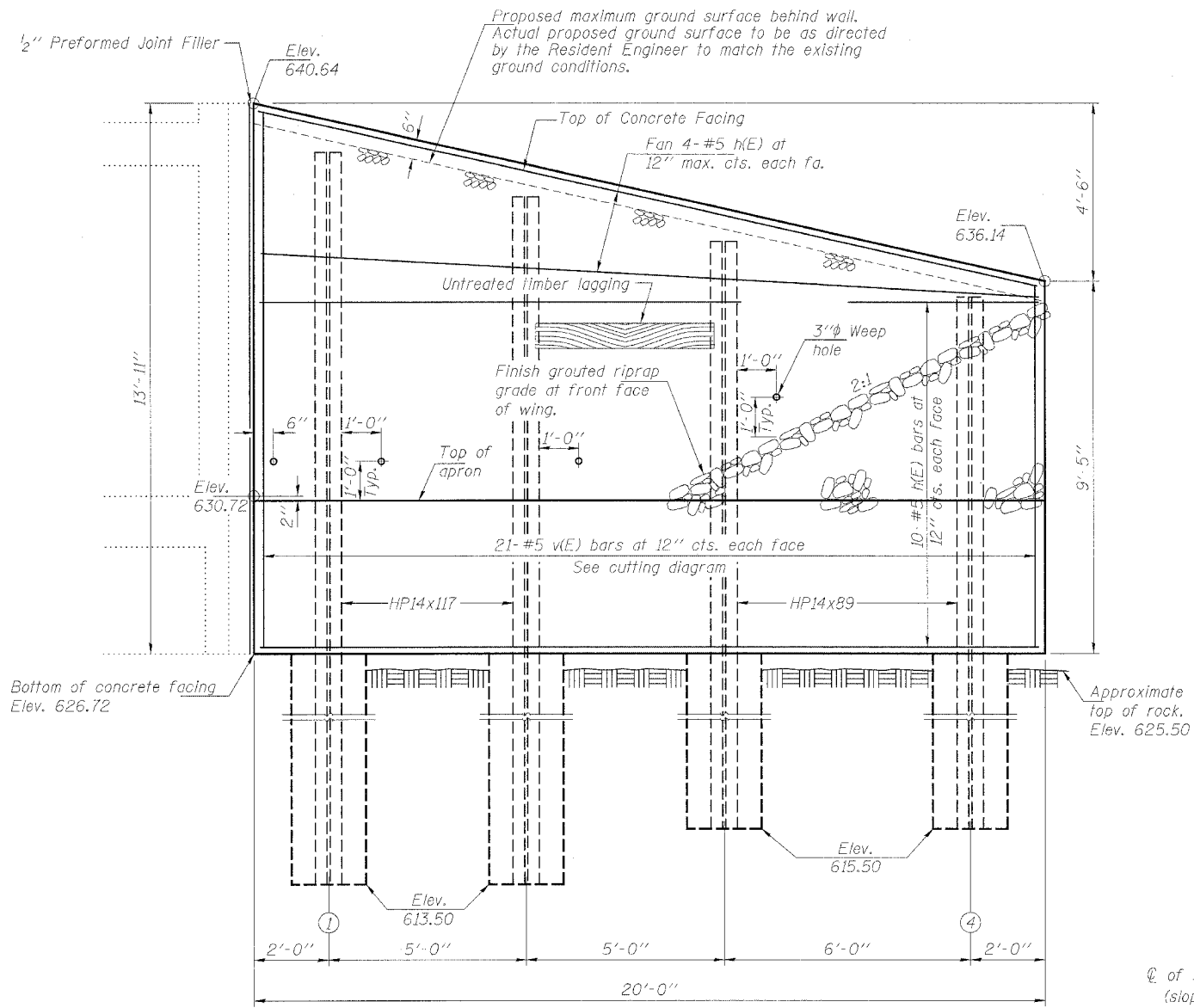


STATE OF ILLINOIS
DEPARTMENT OF TRANSPORTATION

ROUTE NO.	SECTION	COUNTY	STATES	SHEET NO.	SHEET NO. 3
24	*	**	189	166A	3 SHEETS
FED. ROAD DIST. NO. 7	ILLINOIS	FED. AID PROJECT			

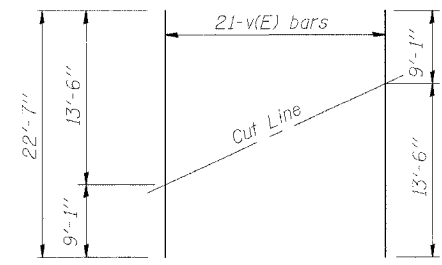
* x1-2,44(2,3,4)RS,BSMART FY04-4
** Williamson/Johnson

Contract No. 98758



PROPOSED WING

All Soldier Piles shall be shop painted with the inorganic zinc rich primer per AASHTO M300, Type 1.

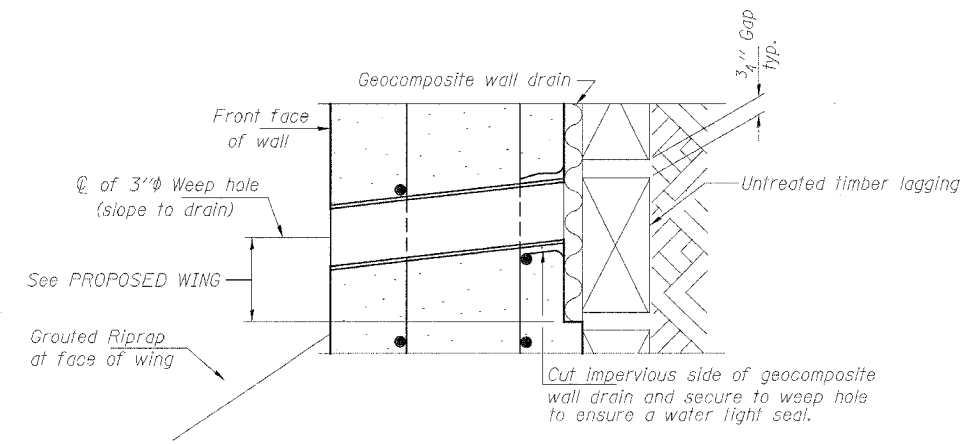


FIELD CUTTING DIAGRAM

Order v(E) bars full length. Cut as shown and use remainder of bars in opposite face.

PILE SUMMARY

PILE #	Top Elevation	Bottom Elevation	Length (ft.)	No. Studs
1	638.68	613.50	25.18	12
2	637.55	613.50	24.05	11
3	636.43	615.50	20.93	10
4	635.08	615.50	19.58	8



WEEP HOLE DRAIN DETAIL

(Soldier Pile Wall)

All costs for the weep hole drain and the connection to the geocomposite wall drain are included with Geocomposite Wall Drain.

BILL OF MATERIAL

Bar	No.	Size	Length	Shape
h(E)	28	#5	19'-8"	—
v(E)	21	#5	22'-7"	—
Concrete Removal			Cu. Yd.	24.6
Concrete Structures			Cu. Yd.	8.6
Reinforcement Bars, Epoxy Coated			Pound	1070

Reinforcement bars designated (E) shall be epoxy coated.

DESIGNED	
CHECKED	
DRAWN	baliya
CHECKED	

EXAMINED	FEBRUARY 24, 2005
PASSED	ENGINEER OF STRUCTURAL SERVICES
	ENGINEER OF BRIDGES AND STRUCTURES