

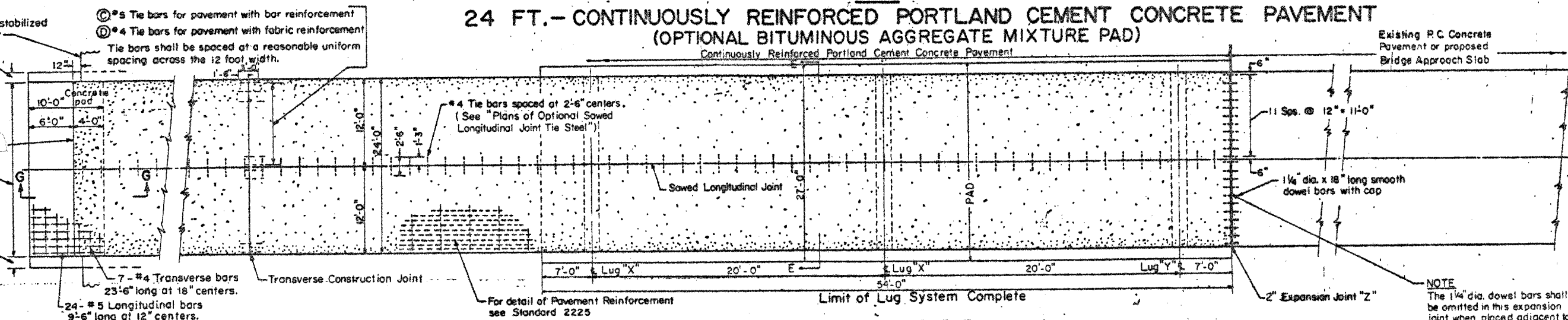
STANDARD DESIGN

24 FT.- CONTINUOUSLY REINFORCED PORTLAND CEMENT CONCRETE PAVEMENT
(OPTIONAL BITUMINOUS AGGREGATE MIXTURE PAD)

P. A. I. NO.	SECTION	COUNTY	TOTAL SHEETS	SHEET NO.
24	**	**	189	179A

STA. TO STA.
ILLINOIS PROJECT NO.
* X1-2,44(2,3,4)RS BSMARTY04-4
* WILLIAMSON/JOHNSON
CONTRACT NO. 98758

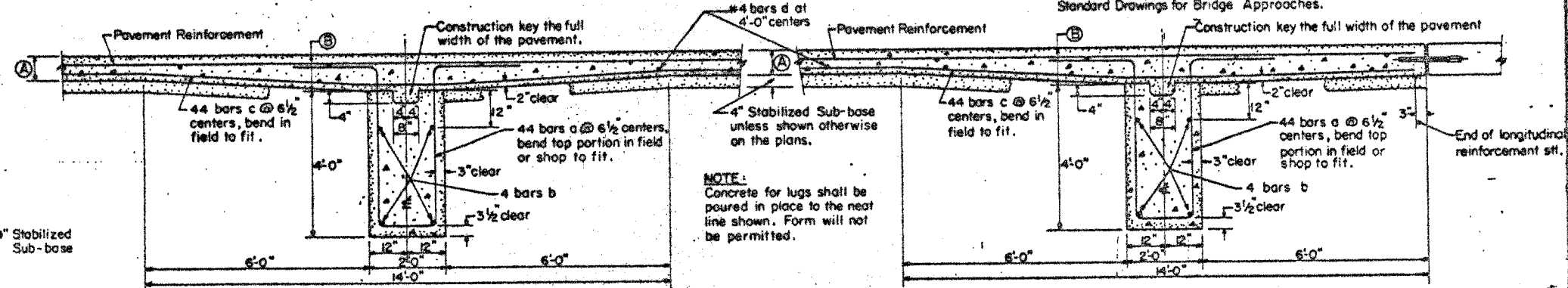
FOR INFORMATION ONLY
THIS SHEET IS FROM THE ORIGINAL PLANS AND IS TO BE USED FOR REFERENCE ONLY



PLAN OF PAVEMENT

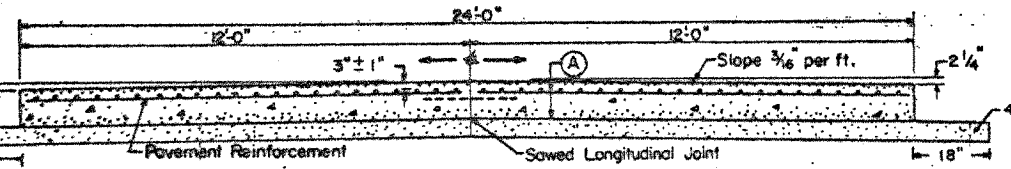
NOTE:
When a slip form paver not equipped with approved automatic grade controls is to be used, it shall operate on the BAM pad which shall be extended so that the overall width is 6 inches greater than the width from outside to outside of the slip form paver's tracks. Such extended width will not be measured for payment but shall be considered incidental to the contract.
If the slip form paver is equipped with approved automatic grade controls that control the four corner supports of the paver and the Contractor elects to use these controls, the BAM pad shall be 12 inches wider than the design pavement width.

NOTE:
The 1 1/4" dia. dowel bars shall be omitted in this expansion joint when placed adjacent to existing pavement.
When pavement is adjacent to bridge approach slab, this expansion joint shall be provided in lieu of the 4" expansion joint shown on the Standard Drawings for Bridge Approaches.

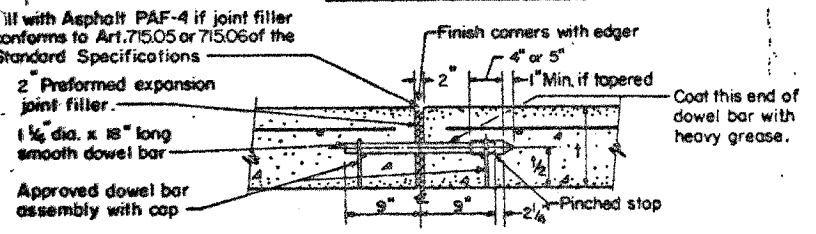


SECTION AT LUG "X"

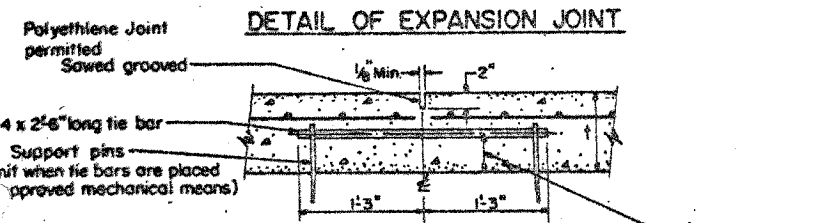
SECTION AT LUG "Y"



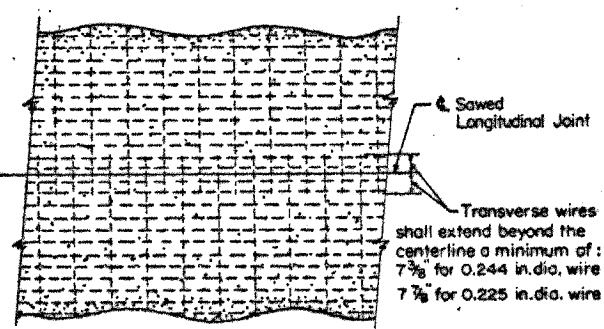
CROSS SECTION E-E



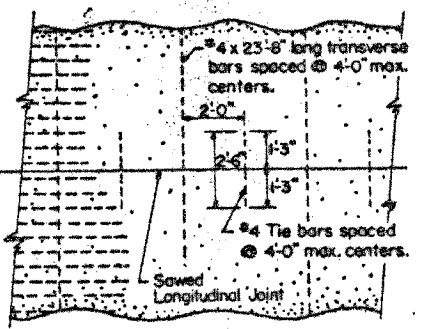
DETAIL OF EXPANSION JOINT



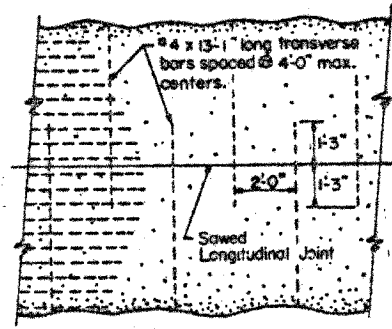
DETAIL OF SAWED LONGITUDINAL JOINT



ASSEMBLY I FABRIC REINFORCEMENT



ASSEMBLY II BAR REINFORCEMENT



ASSEMBLY III

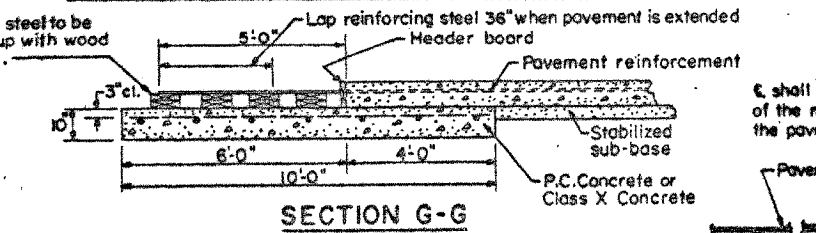
PLANS OF OPTIONAL SAWED LONGITUDINAL JOINT TIE STEEL

BILL OF MATERIAL FOR LUG SYSTEM
(Excluding pavement concrete and pavement reinforcement)

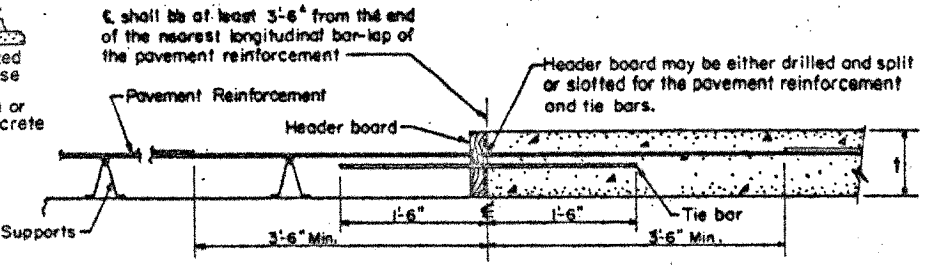
Bar	No.	Size	Length	Shape
a	132	#7	14'-0"	□
b	12	#5	24'-9"	□
c	132	#5	20'-0"	□
d	28	#4	11'-9"	□

Class X Concrete, Cu.Yds. 20.85
Reinforcing Bars, Lbs. 7062
BAM Pad, Sq.Yds. 146

Part	(A)	(B)	(C)	(D)
8"	12"	8	12	
9"	14"	9	14	



SECTION G-G



DETAIL OF TRANSVERSE CONSTRUCTION JOINT

Sawed joints shall be sealed with hot poured material meeting the requirements of the Tentative Specifications for Concrete Joint Sealer, Hot-Poured Elastic Type, ASTM Designation: D190-52 T, or sealed with a cold applied, ready-mixed concrete joint seating compound meeting the requirements of Article 716.03

The 54 feet shown above of Bituminous Aggregate Mixture Pad, between and adjacent to the lugs will be considered incidental to the Lug System.

Expansion joint shall be considered incidental to the cost of Continuously Reinforced Concrete Pavement.

Details shown in Section G-G shall apply only at the end of the construction section; the 10' reinforced concrete pad, header board, wood blocking, and the 5 ft. of extended pavement reinforcement will be considered incidental to the cost of the C.R.C. Pavement.

Lug end anchorages shall be constructed at the locations shown except that when the distance between two expansion joints marked "Z" is less than 1500 ft. the anchorage shall be as shown on the detailed construction plans.

DETAILS: EXISTING CRC PAVEMENT

STANDARD 2224-8
(Full Size)

STATE OF ILLINOIS DEPT. OF PUBLIC WORKS & BUILDINGS DIVISION OF HIGHWAYS	ISSUED 1-4-65 W.F. 3-10-69
REVISIONS	JKP 10-15-69
W.F. 4-1-63 W.F. 3-18-70	
W.F. 6-23-65	
W.F. 4-20-66	
G.R. 8-1-66	
G.R. 1-15-69	