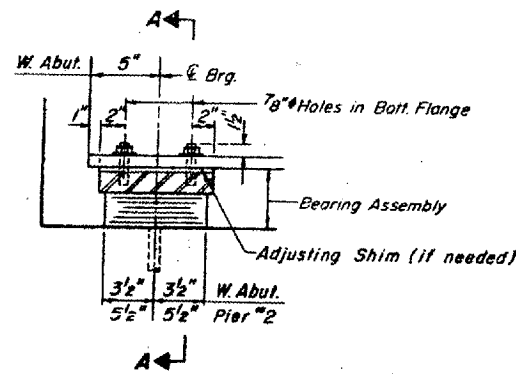
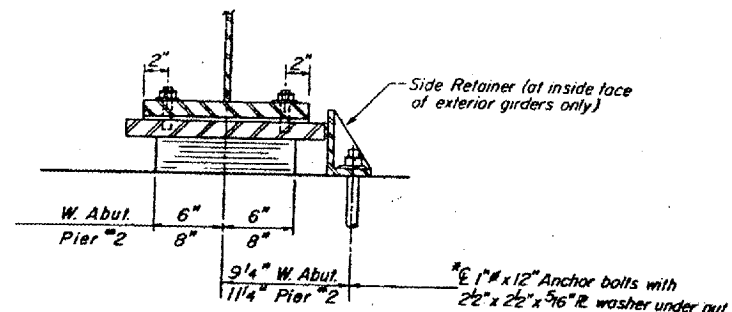


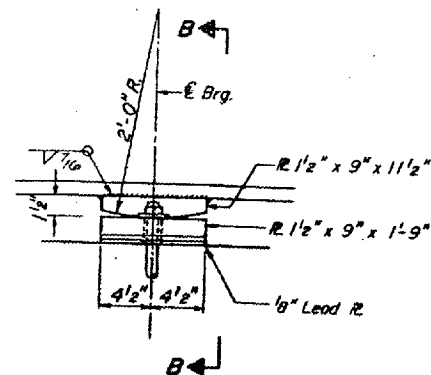
Sec. 129 BC-BR-1



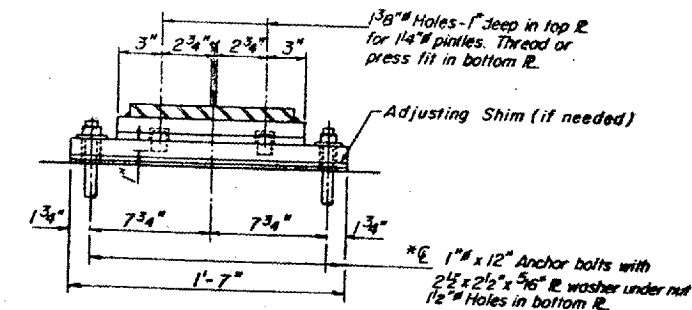
SECTION AT ABUT.



SECTION A-A

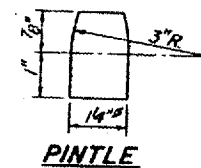


ELEVATION AT PIER



SECTION B-B

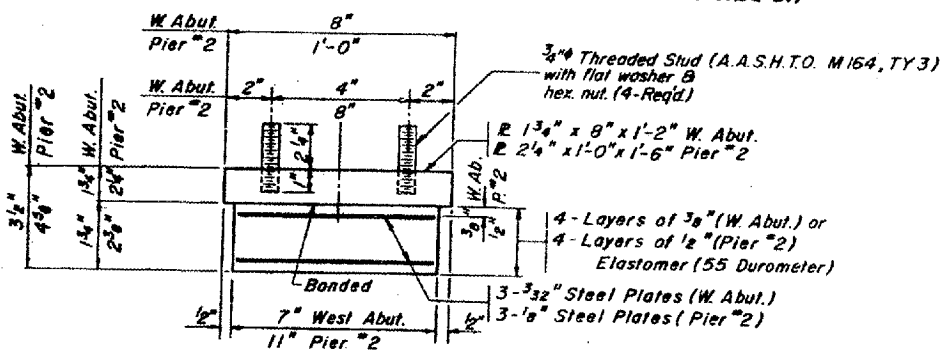
FIXED BEARING
 (AT PIER NO. 1 5 REQ'D.)



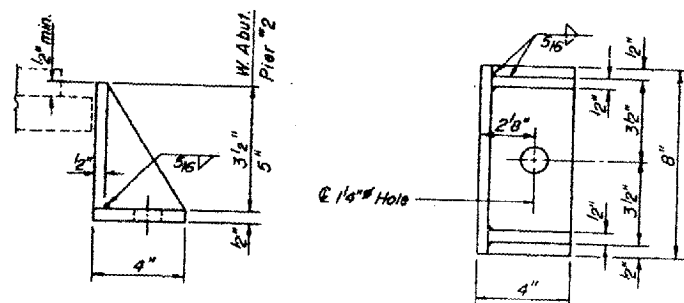
PINTLE

TYPE I ELASTOMERIC EXP. BRG.
 (AT WEST ABUTMENT 5 REQ'D.)
 (AT PIER NO. 2 5 REQ'D.)

*Note: After girders have been erected holes of expansion bearings shall be drilled and anchor bolts grouted in place. Anchor bolts at fixed bearings may be built into the masonry.




BEARING ASSEMBLY



SIDE RETAINER

FOR INFORMATION ONLY:
 BRIDGE NO. 7 STRUCTURE 100-0033

TYPE I ELASTOMERIC EXP BRG.
 FEDERAL AID PRIMARY RT. 726 (ILL. 148)
 SECTION 129-BC-BR-1
 OVER POND CREEK
 WILLIAMSON COUNTY
 STATION 222+80.00

DESIGNED BY: P.K.D.	 HANSON ENGINEERS INCORPORATED ENGINEERS, ARCHITECTS & SURVEYORS, CHICAGO, ILL.	PROJECT NO.: 3032000
DRAWN BY: T.E.H.		DATE: 11-12-81
CHECKED BY: M.L.B.		
APPROVED BY: T.E.H.		