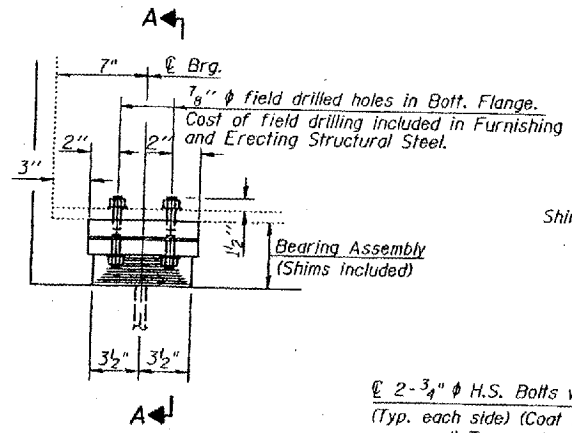
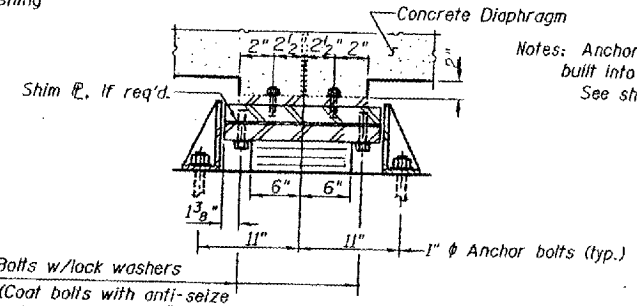


PROJECT NO.	DATE	SHEETS	NO.	DRAWN BY	DATE
F.A.S. 932	11/18/03	51	42		
21 SHEET					

STATE OF ILLINOIS
 DEPARTMENT OF TRANSPORTATION



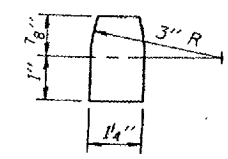
ELEVATION AT WEST ABUT.



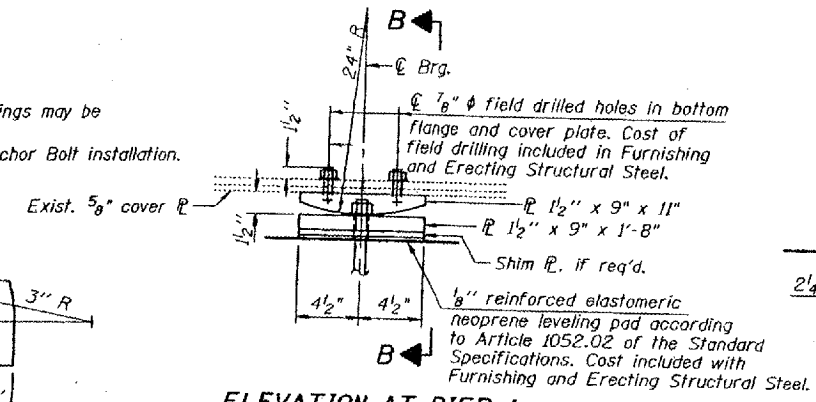
SECTION A-A

2-3/4" H.S. Bolts w/lock washers (Typ. each side) Coat bolts with anti-seize compound Tapped holes in top 1/8" holes in bearing.

Notes: Anchor bolts at fixed bearings may be built into the masonry. See sheet 14 of 21 for Anchor Bolt installation.

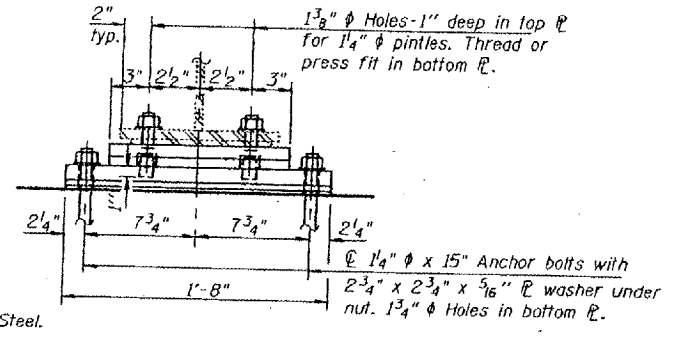


PINTE



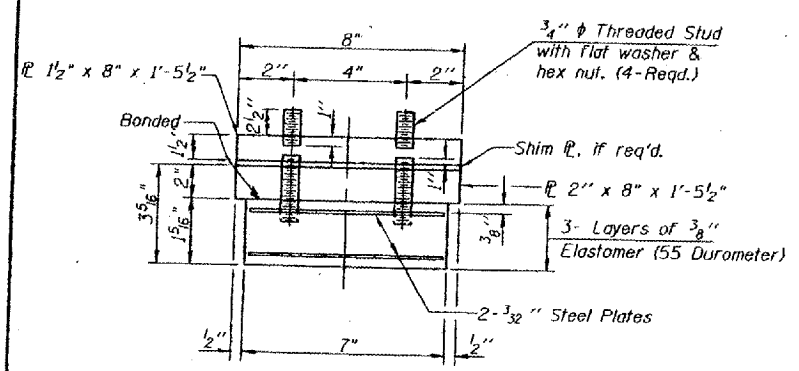
ELEVATION AT PIER 1

FIXED BEARING
(6 Req'd.)



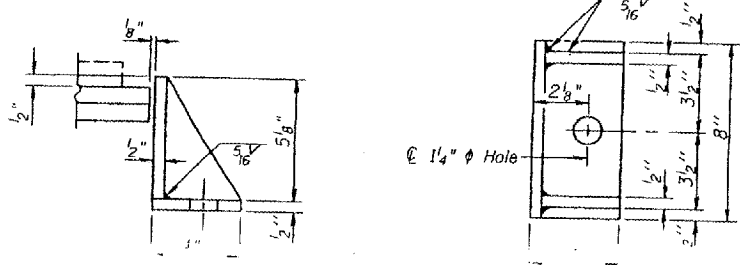
SECTION B-B

TYPE I ELASTOMERIC EXP. BRG.



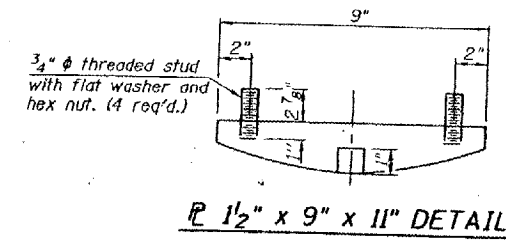
BEARING ASSEMBLY

Note: Shim plates shall not be placed under elastomer.

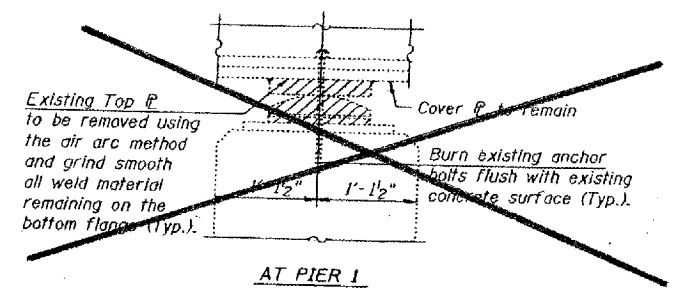


SIDE RETAINER

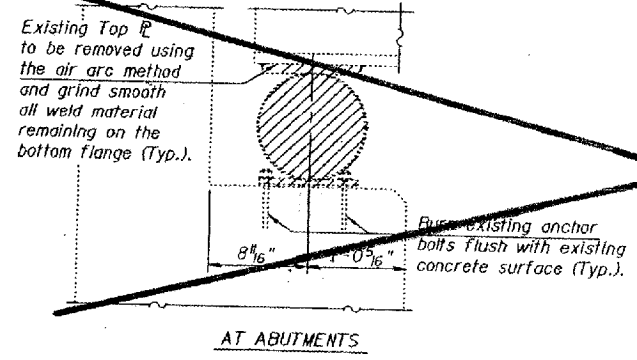
Equivalent rolled angle with stiffener will be allowed in lieu of welded plates, weight included with Furnishing & Erecting Structural Steel.



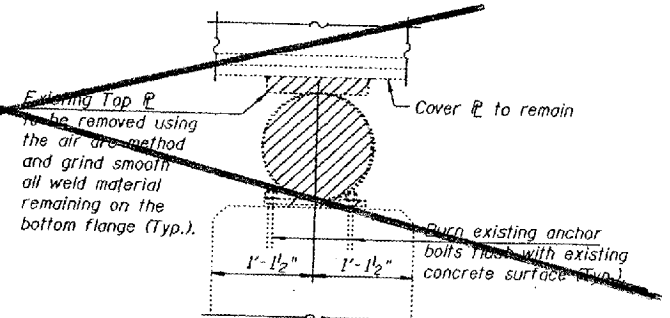
1 1/2" x 9" x 11" DETAIL



AT PIER 1



AT ABUTMENTS



AT PIER 2

PROCEDURE FOR JACKING EXISTING SUPERSTRUCTURE

- The Contractor shall submit plans for Jacking to the Engineer for approval, prior to commencing any work at the Bearings.
- Jacking and removal of existing bearing shall be done after existing deck removal is completed and before the new deck is poured.
- Existing end and interior diaphragms between Stages I and II shall be disconnected.
- All Beams at all supports shall be lifted simultaneously during each stage of construction such that the relative elevation between adjacent beams shall not exceed 1/4" from their original relative elevations, and such that the relative elevations between adjacent substructure units shall not exceed 3/4" during or after jacking operations.
- Jacking shall be limited to a maximum of 1 3/8" lift to replace existing bearings and build pedestals. The maximum dead load reaction with deck removed (per bearing) is 1.2 k at abutments and 4.2 k at Piers.
- The Jack capacity per beam shall be 1.8 k at Abutments and 6.3 k at Piers.
- The new Bearings shall be in place and the Jacks shall be lowered before the new concrete deck is poured.
- Jacking against diaphragms is prohibited.

EXISTING BEARING REMOVAL

Hatched areas indicate existing bearings to be removed. Cost included with "Jacking Existing Superstructure".

BILL OF MATERIAL

Item	Unit	Total
Elastomeric Bearing Assembly Type I	Each	6

DESIGNED Chi-Cheung Chou
 CHECKED Dhruv P. Narielwala
 DRAWN R. Sommer
 CHECKED CCC/DPN

EXAMINED Thomas J. Damagala
 PASSED Ralph E. Carlson
 ENGINEER OF BRIDGES AND STRUCTURES

June 26, 2003

FOR INFORMATION ONLY:
 BRIDGE NO. 2 STRUCTURE 076-0021