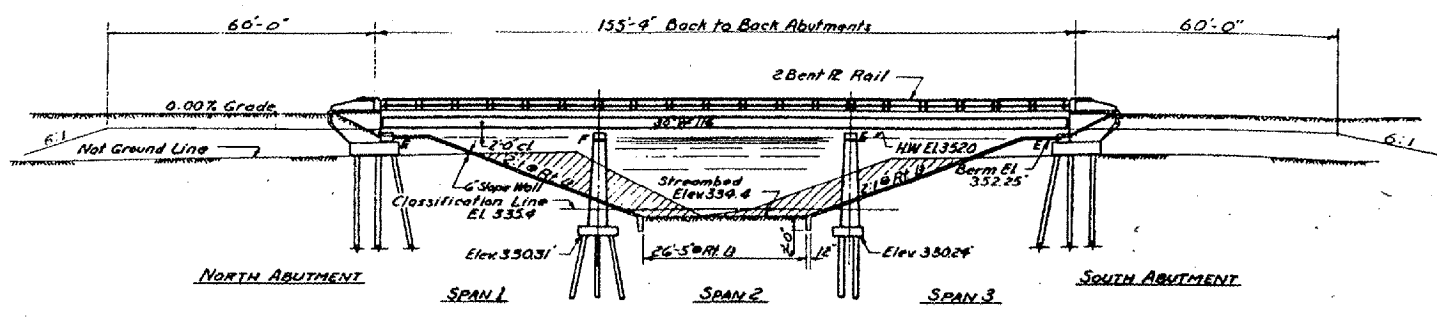


BM S+4C in roof of twin 10' 154 Ft  
 Lt Sta. 831.85 Elev. 347.92  
 No Existing Structure.

STATE OF ILLINOIS  
 DEPARTMENT OF PUBLIC WORKS & BUILDINGS  
 DIVISION OF HIGHWAYS

ROUTE NO.	SECTION	PULA	SHEET NO.:
A.L. 57	77-1B		28 OF 31
FOR ROAD DIST. NO. 1			FILE NO. PROJECT: E-57-1(6)21



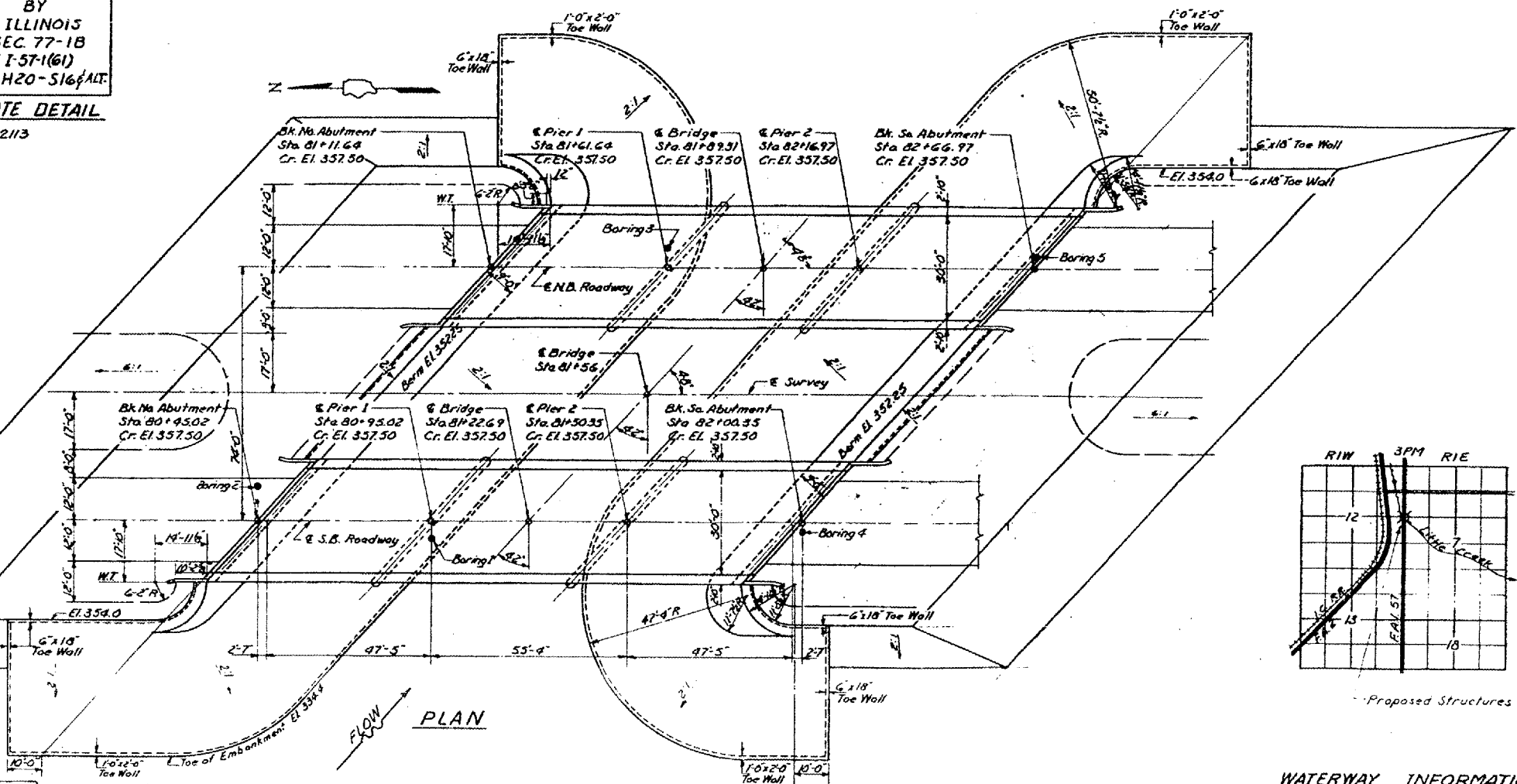
Note: Hatched area indicates Channel Excavation

ELEVATION  
 Scale: 1" = 20'

STATION 81+56  
 BUILT BY  
 STATE OF ILLINOIS  
 FAIR. 57 SEC. 77-1B  
 F.A. PROJ. E-57-1(6)1  
 LOADING H20-S16 44 ALT.  
 NAME PLATE DETAIL  
 See Std. 2113

**GENERAL NOTES**

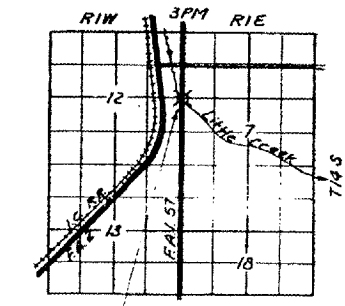
Class X concrete shall be used throughout except in hand-rail end posts and piers.  
 Class A concrete shall be used in piers.  
 Handrail concrete shall be used in hand rail end posts.  
 The concrete floor slab shall be finished in accordance with Article 5119 of the Standard Specifications.  
 Slope wall shall be reinforced with welded wire fabric G16 mesh, #4 wires, weighing 58# per 100 sq ft.  
 Rivets #4, open holes #1/2", unless noted.  
 All paint shall be furnished and applied by the Contractor.  
 Railings shall be adjusted to true alignment after curbs have been poured.  
 All rockers, bearing plates, lead plates, pintles, and anchor bolts shall be fabricated and set in accordance with Article 5115 of the Standard Specifications and are included in quantity of Structural Steel.  
 Expansion guards shall be fabricated and erected in accordance with Article 5113 (d) of the Standard Specifications.  
 Expansion guards are included in quantity of Structural Steel.  
 Except as otherwise provided, all structural steel shall receive one shop coat of red lead paint and two field coats of aluminum paint. See Articles 561 to 563 inclusive of the Standard Specifications.  
 The Contractor shall drive 2 test piles (in permanent locations) as directed by the Engineer before ordering remainder of piles. One test pile at N. Abut. E. Bridge and one test pile at pier-2 W. bridge. Layout of slope walls may be varied in field to suit ground conditions.  
 All structural steel shall conform to A-56 Steel.



TOTAL BILL OF MATERIAL 2 BRIDGES (SEC 77-1B)

Item	Super	Sub	Total
Class X Concrete	Cu. Yd. 301.5	210	511.5
Class A Concrete	Cu. Yd.	458.2	458.2
Handrail Concrete	Cu. Yd.	5.8	5.8
Reinforcement Bars	Lbs. 60430	34400	94830
Structural Steel	Lbs. 259860		259860
Name Plates	Each	2	2
Metal Handrail	Ln. Ft. 612		612
* Class A Excavation for Struct.	Cu. Yd.	430	430
* Class B Excavation for Struct.	Cu. Yd.	580	580
Channel Excavation	Cu. Yd.	422.5	422.5
Slope Wall	Sq. Yd.	3814	3814
Steel Piles (B.B.P. 36)	Ln. Ft.	7452	7452
Steel Test Piles	Each	2	2
** Bridge Seat Sealant	L.S.		1
Protective Coat	Sq. Yd.	1296	1296

\* Includes excavation for toe wall of slope wall  
 \*\* Abutments only



DESIGNED: E. Roodt  
 CHECKED: J.M. Spang  
 DRAWN: J.L. Armstrong  
 CHECKED: M.J.

EXAMINED: [Signature]  
 PASSED: [Signature]  
 APPROVED: [Signature]

DESIGN STRESSES  
 f<sub>c</sub> = 1400 psi. Super & Sub  
 v = 75 psi. Footings  
 f<sub>s</sub> = 20,000 psi. Reinf.  
 f<sub>s</sub> = 18,000 psi. Struct.  
 n = 10

WATERWAY INFORMATION  
 Drainage Area ----- 10290 Acres  
 Character ----- Level  
 Required Opening (50 yr Flood) ----- 1000 Sq. Ft.  
 Present Opening ----- 1296 Sq. Ft.  
 Proposed Opening ----- 1000 Sq. Ft.

LOADING H20-S16-44 ALTERNATE

FOR INFORMATION ONLY:

BRIDGE NO. 7 STRUCTURE 077-0013

BRIDGE NO. 8 STRUCTURE 077-0014

Revised - 7-11-62. N.M.M. In ELEVATION changed quantity of Embankment, from 1687 to 1221 Cu. Yd., 21 M. Abut. & from 1120 to 1054 Cu. Yd., at S. Abut., also changed BORROW EXCAVATION TO EARTH EXCAVATION & QUANTITIES FROM 2100 TO 1985 Cu. Yd., 21 M. Abut. & from 510 TO 2157 at S. Abut.  
 Rev. 8-14-62 W.L.P. Draw in the 60' Berm in Plan & Elevation Views  
 Removed Embankment & Borrow from Elevation View  
 Quantities: Class X Concrete from 296.2 to 301.5 Cu. Yd., Super of in Totals  
 From 506.2 to 515.5 Cu. Yd. - Reinf. Bars Super 11780 to 60430  
 & in Totals from 44180 to 94830  
 10/1/62 In TOTAL BILL OF MATERIAL and Protective Coat 1296 Sq. Yd., in GENERAL NOTES removed not  
 Rev. 7-11-63 J.A.L. Crossed Piles 700 Ln. Ft. omitted from Total Bill of Material - Added Note for A-36 Steel to General Notes