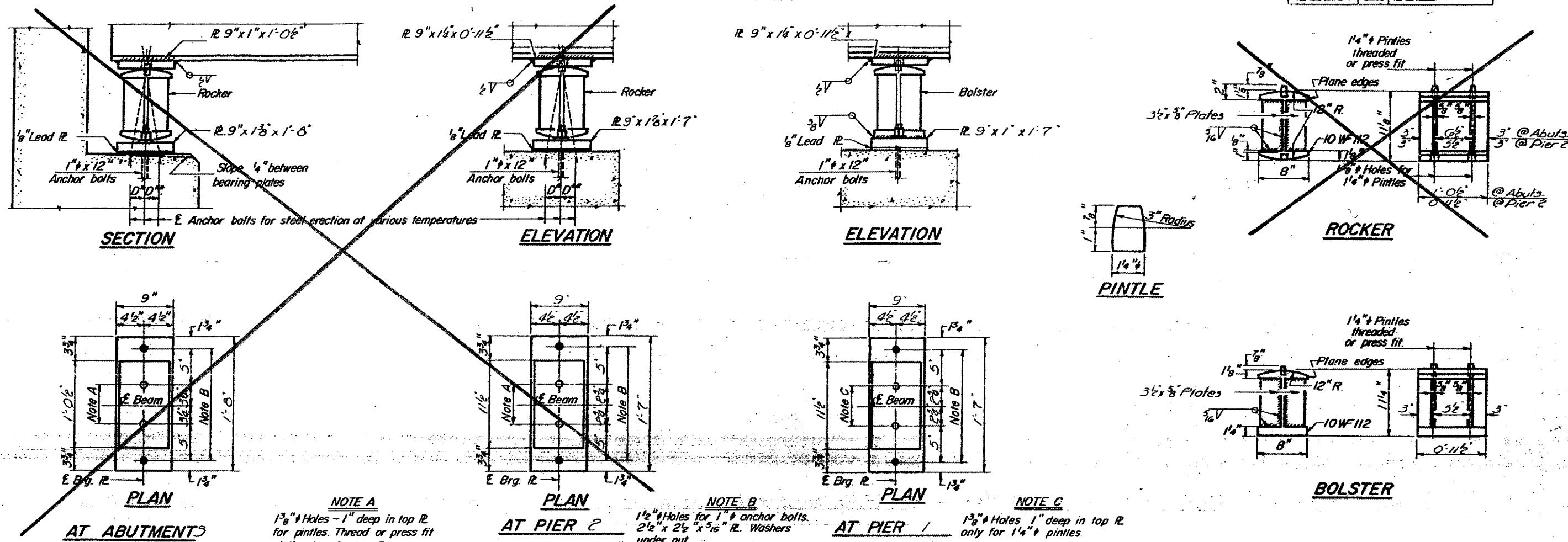


STATE OF ILLINOIS
 DEPARTMENT OF PUBLIC WORKS & BUILDINGS
 DIVISION OF HIGHWAYS

DATE	SECTION	MASSAC	79	41
1.24	C-278			



NOTES ON SETTING OF ANCHOR BOLTS AT EXP. BRGS.

- a) D* (Side of brg. away from fixed brg.)
 $D^* = \frac{1}{8}''$ per each 100' of expansion for every 15° fall below the normal temp. of 50°F.
- D** (Side of brg. toward fixed brg.)
 $D^{**} = \frac{1}{8}''$ per each 100' of expansion for every 15° rise above the normal temp. of 50°F.

b) After beams have been erected and dimensions D* or D** determined, holes shall be drilled and anchor bolts shall be grouted in place. All fixed anchor bolts may be built into the masonry.

BEARING ASSEMBLY DETAILS

- NOTE A: 1 3/8" Holes - 1" deep in top R for pintles. Thread or press fit pintles into bottom R.
- NOTE B: 1 1/2" Holes for 1" anchor bolts. 2 1/2" x 2 1/2" x 5/16" R. Washers under nut.
- NOTE C: 1 3/8" Holes 1" deep in top R only for 1 1/4" pintles.

TABLE OF MOMENTS & REACTIONS INTERIOR BEAMS

	MOMENTS			REACTIONS	
	4 Sp. 1	Pier 1	5 Sp. 2	Abut.	Pier 1
D.L.	208	450	212	22	79
L.L.	353	321	365	37	47
Imp.	100	87	95	—	—
Total	661	858	672	59	126

Moments are in kips-ft.
 Reactions are in kips

DESIGNED: *H. J. S. C.*
 CHECKED: *J. T. Minion*
 DRAWN: *P. G. Barnett*
 CHECKED: *AWL CFM*

EXAMINED: *[Signature]*
 PASSED: _____
 APPROVED: _____

SEPT 30 1968

FOR INFORMATION ONLY:
 BRIDGE NO. 3 STRUCTURE 064-0020