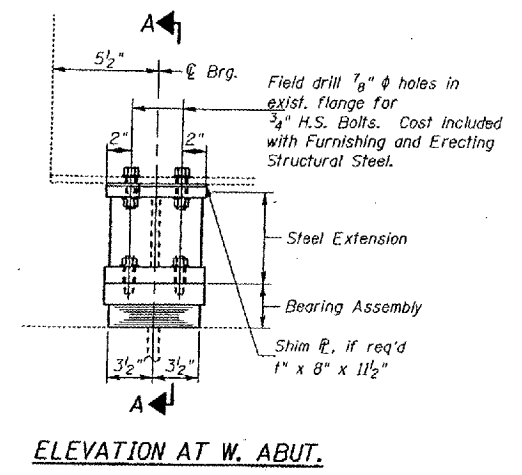
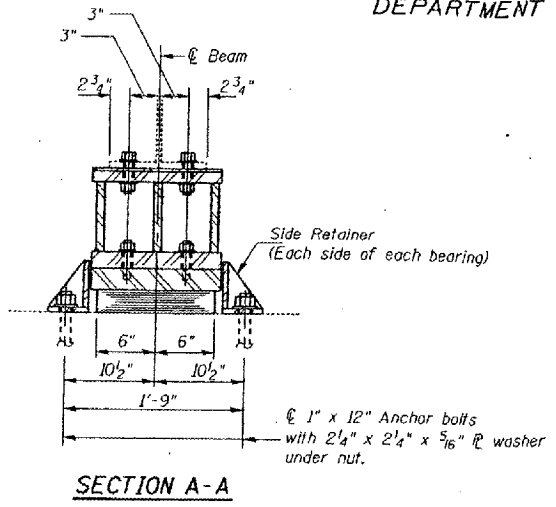


STATE OF ILLINOIS
 DEPARTMENT OF TRANSPORTATION

SCALE	SECTION	COPY	DATE	SHEET	SHEET NO.
F.A.I. 24	*	MASSAC	234	159	SHEETS
* 6411.2.2-1.3-1.3.RS-1 BSMART FY2002-2					



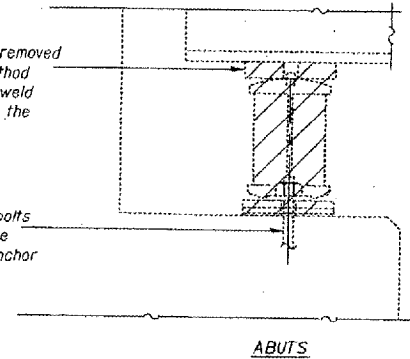
ELEVATION AT W. ABUT.



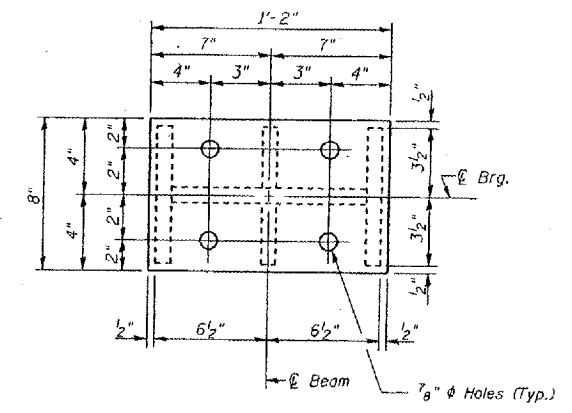
SECTION A-A

Existing Plate to be removed using the air-arc method and grind smooth all weld material remaining on the bottom flange.

Burn the existing anchor bolts flush with existing concrete surface. Grind existing anchor bolts smooth and seal with epoxy.



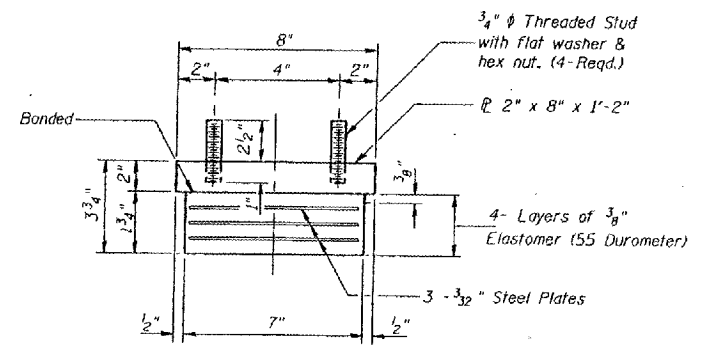
EXISTING BEARING REMOVAL DETAIL
 Cost is included with Jack and Remove Existing Bearings



PLAN-TOP & BOTTOM PLATE

TYPE I ELASTOMERIC EXP. BRG.

Notes: See sheet 172 for Anchor Bolt installation.

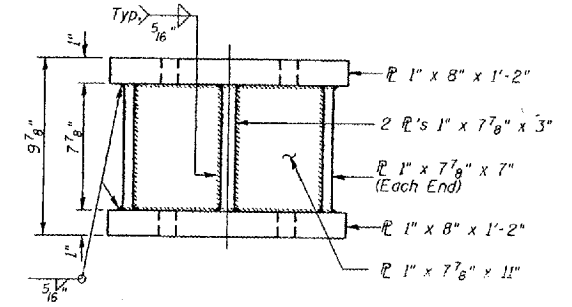


BEARING ASSEMBLY

Note: Shim plates shall not be placed under Bearing Assembly.

GIRDER REACTIONS

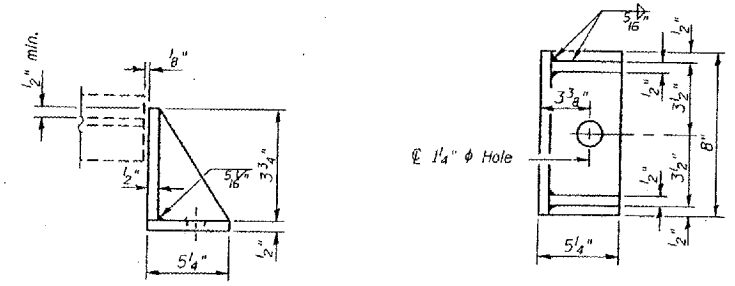
R _P	(K)	22.60
R _L	(K)	37.30
Imp.	(K)	11.19
R (Total)	(K)	71.09



STEEL EXTENSION AT WEST ABUT.

BILL OF MATERIAL

Item	Unit	Total
Elastomeric Bearing Assembly Type I	Each	6
Jack and Remove Existing Bearings	Each	6



SIDE RETAINER

Equivalent rolled angle with stiffeners will be allowed in lieu of welded plates. Weight included with Furnishing and Erecting Structural Steel.

Notes:
 Prior to ordering any material, the Contractor shall verify in the field all bearing height and shim thickness dimensions. The minimum jack capacity required is 35 Tons.
 New steel extensions, side retainers, connection bolts, any shim and anchor bolts are included in "Furnishing and Erecting Structural Steel".
 Hatched areas indicate Jack and Remove Existing Bearings.
 Existing diaphragm removal and new diaphragm erection shall be coordinated with drilling holes in bottom flange for bearing attachment, if necessary, to provide clearance for the drill.

DESIGNED:	CMW
CHECKED:	TWH
DRAWN:	CMW
CHECKED:	TWH

WEST ABUTMENT

FOR INFORMATION ONLY:
 BRIDGE NO. 3 STRUCTURE 064-0020

Thu Jul 5 10:45:51 2001
 c:\p1\br13\030000\064000000.dwg L:\m-63