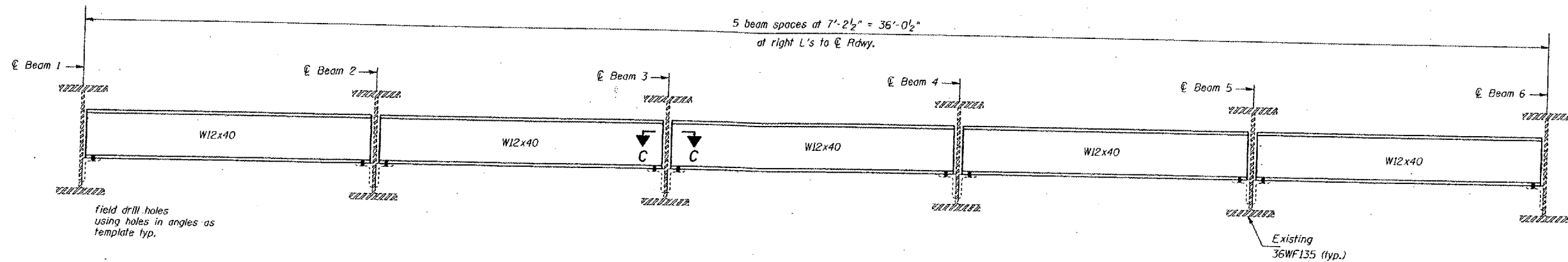


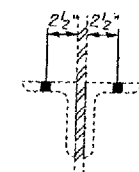
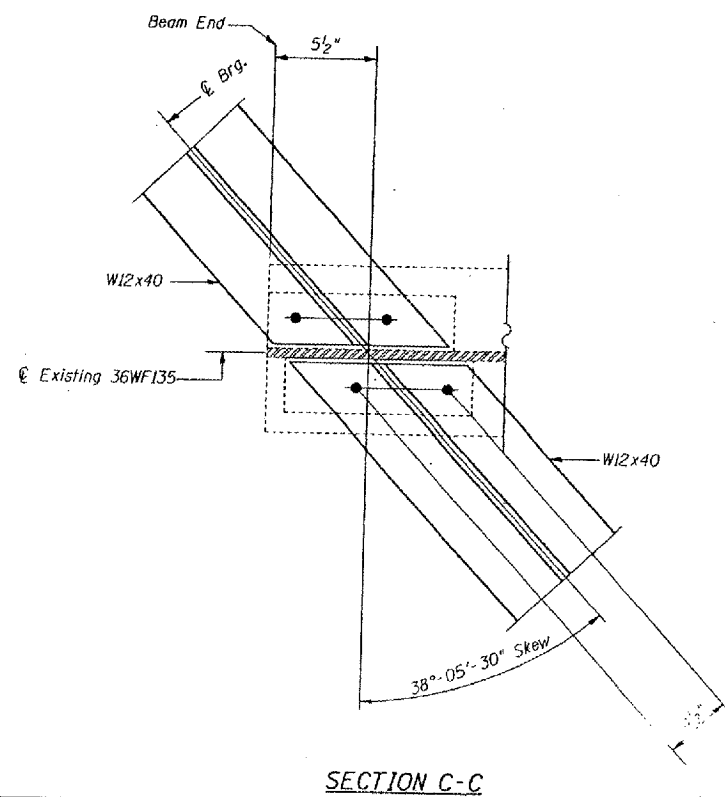
STATE OF ILLINOIS
 DEPARTMENT OF TRANSPORTATION

ROUTE NO.	SECTION	COUNTY	SHEET NO.	SHEET NO.
F.A.I. 24	*	MASSAC	234	166
FED. ROAD DIST. NO. 7		ALIGNED	PER. AND PROJECT	
* 641.2-2-1.3-1.31RS-1 BSMART FY2002-2				



DIAPHRAGM REPLACEMENT AT ABUTMENTS

Required: 10 - W12 x 40 x 9'-0" long



CLIP ANGLES

DESIGNED:	CMW
CHECKED:	TWH
DRAWN:	CMW
CHECKED:	TWH

Note: $\frac{5}{16}''$ ϕ Holes for new $\frac{3}{4}''$ H.S. Bolts shall be used for all diaphragm connections. Two hardened washers shall be required at diaphragm connections. Existing clip angles are welded to the webs and are to be reused.

FOR INFORMATION ONLY:

BRIDGE NO. 4 STRUCTURE 064-0021