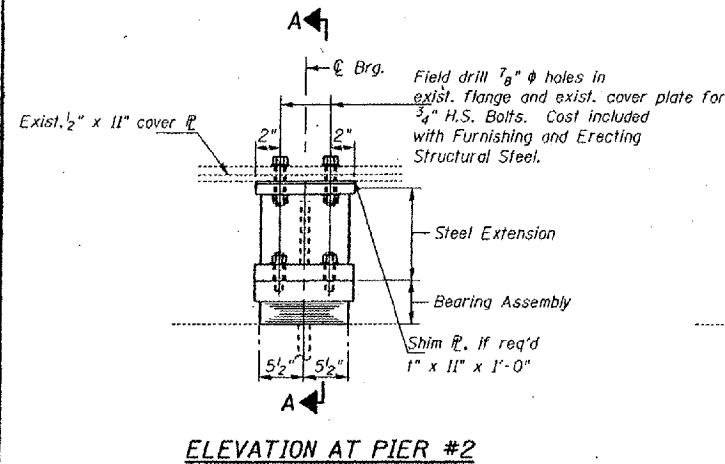


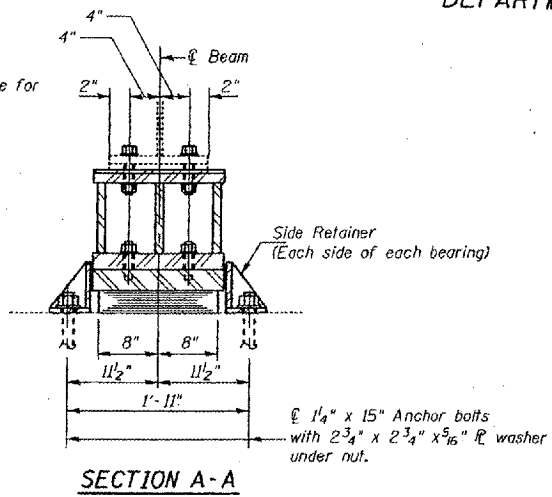
STATE OF ILLINOIS
 DEPARTMENT OF TRANSPORTATION

ROUTE NO.	SECTION	QUANTITY	DEPTH	FEET	SHEET NO.
F.A.I. 24	*	MASSAC	234	169	SHEETS
FED. ROAD DIST. NO. 7					
ALLOTTED PER. AMOUNT					

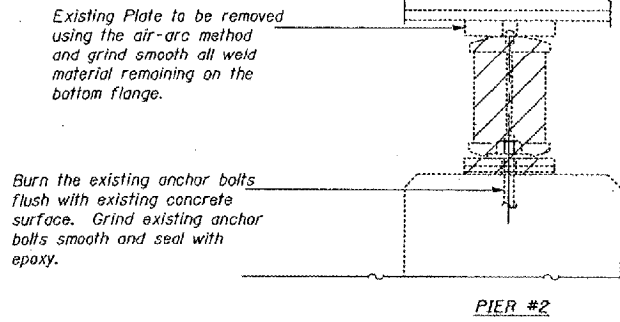
* 6411.2.2-1.3-1.3/RS-1 BSMART FY2002-2



ELEVATION AT PIER #2

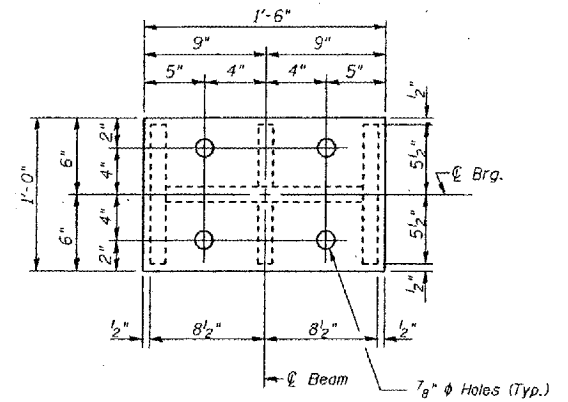


SECTION A-A

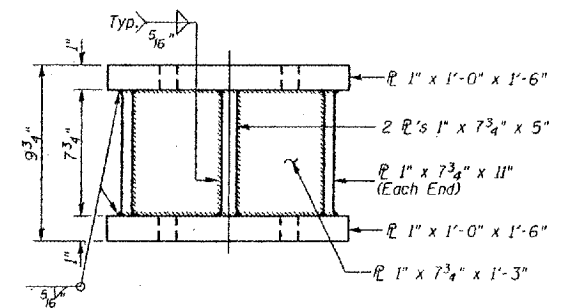


EXISTING BEARING REMOVAL DETAILS

Cost is included with Jack and Remove Existing Bearings



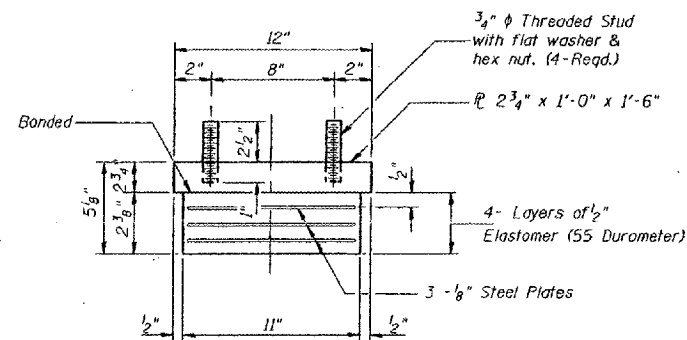
PLAN-TOP & BOTTOM PLATE



STEEL EXTENSION AT PIER #2

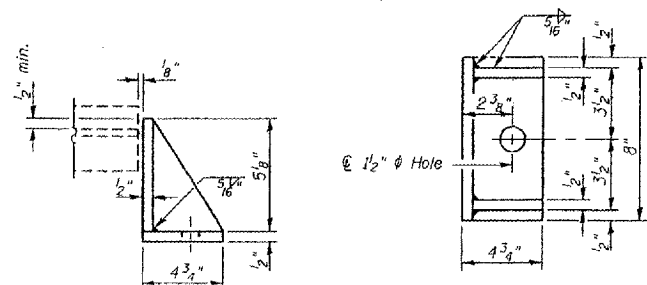
TYPE I ELASTOMERIC EXP. BRG.

Notes: See sheet 172 for Anchor Bolt Installation.



BEARING ASSEMBLY

Note: Shim plates shall not be placed under Bearing Assembly.



SIDE RETAINER

Equivalent rolled angle with stiffeners will be allowed in lieu of welded plates. Weight included with Furnishing and Erecting Structural Steel.

GIRDER REACTIONS

RR	(K)	81.10
Rt	(K)	48.60
Imp.	(K)	14.58
R (Total)	(K)	144.28

Notes:
 Prior to ordering any material, the Contractor shall verify in the field all bearing height and shim thickness dimensions. The minimum jack capacity required is 85 Tons.
 New steel extensions, side retainers, connection bolts, any shim and anchor bolts are included in "Furnishing and Erecting Structural Steel".

BILL OF MATERIAL

Item	Unit	Total
Elastomeric Bearing Assembly Type 1	Each	6
Jack and Remove Existing Bearings	Each	6

DESIGNED:	CMW
CHECKED:	TWH
DRAWN:	CMW
CHECKED:	TWH

FOR INFORMATION ONLY:
 BRIDGE NO. 4 STRUCTURE 064-0021