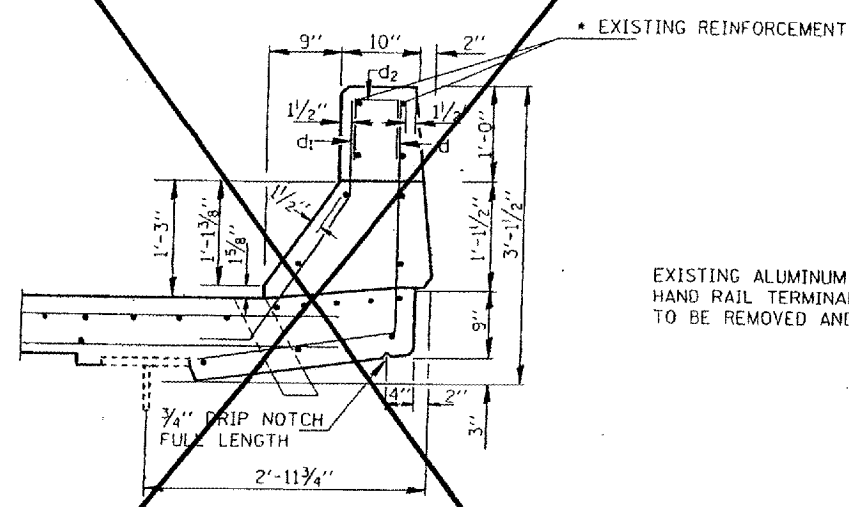
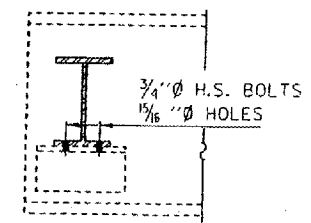


NOTE:  $d_1$  (E) and  $d_2$  (E) BARS SPACED AT 12" CTRS.



SECTION THRU PARAPET

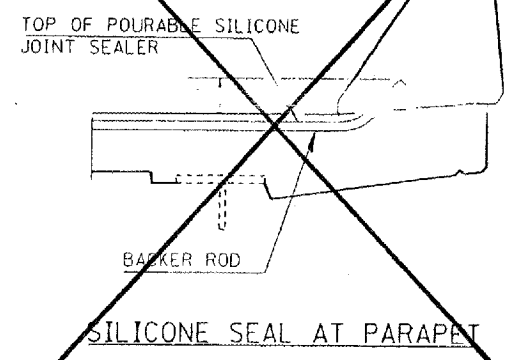
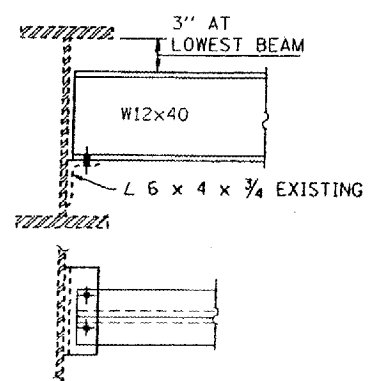
\* EXISTING REINFORCEMENT EXTENDING INTO REMOVAL AREA SHALL BE CLEANED, STRAIGHTENED AND INCORPORATED INTO THE NEW CONSTRUCTION. COST INCLUDED IN CONCRETE REMOVAL.



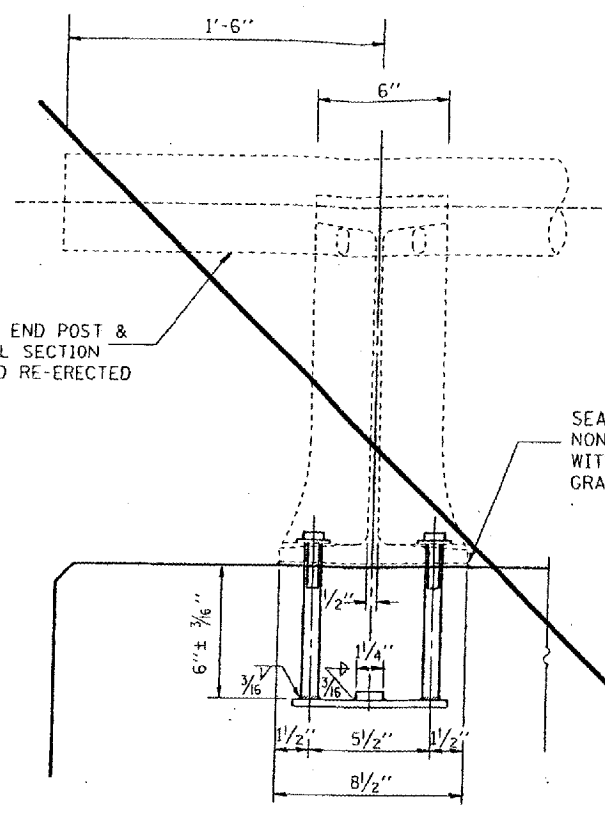
END DIAPHRAGM

20 REQUIRED

NOTE: TWO HARDENED WASHERS SHALL BE REQUIRED OVER ALL OVERSIZE HOLES FOR DIAPHRAGMS.

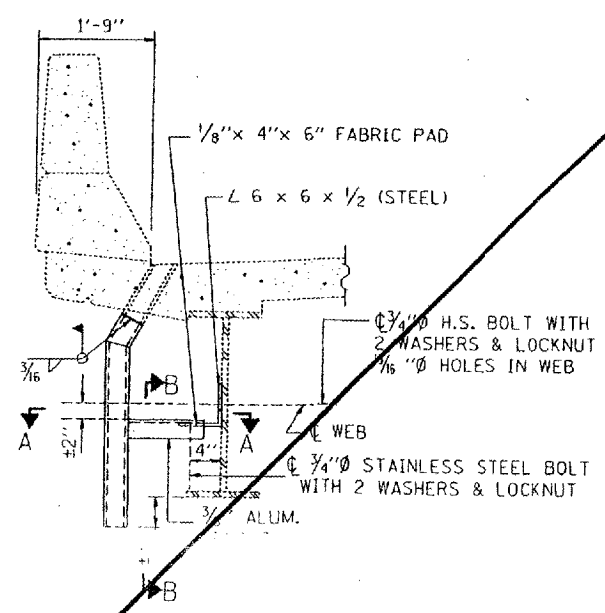


SILICONE SEAL AT PARAPET



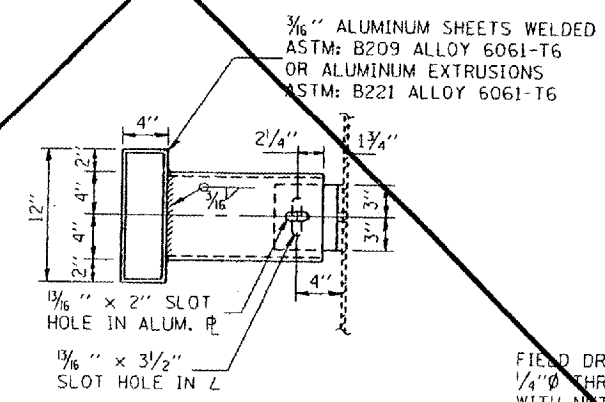
NOTE: RAIL SHALL BE REMOVED AND RE-ERECTED AS NECESSARY TO ALLOW JOINT REPAIR. COST INCLUDED IN CONCRETE REMOVAL.

RAIL POST DETAILS

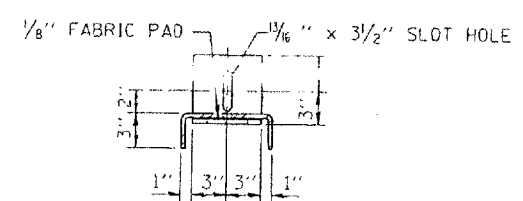


SECTION AT DRAIN

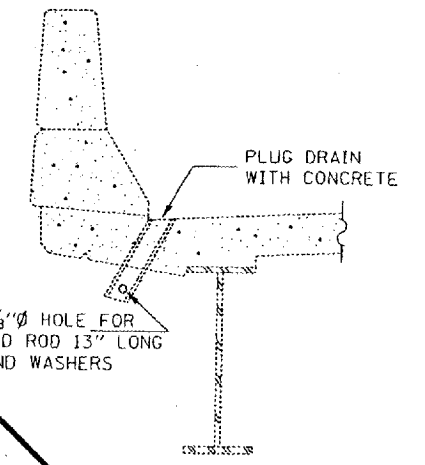
( 16 LOCATIONS )



SECTION A-A



SECTION B-B



SECTION AT DRAIN  
 DRAIN ELIMINATION DETAIL

( 24 LOCATIONS )

DESIGNED	J.C.P.
CHECKED	
DRAWN	T. F.
CHECKED	



CONCRETE SUPERSTRUCTURE, SILICONE JOINT DETAIL, DI

FOR INFORMATION ONLY:  
 BRIDGE NO. 9 STRUCTURE 064-0030  
 BRIDGE NO. 10 STRUCTURE 064-0031

Tue Jul 17 14:52:33 2001  
 c:\p\c\projects\smart\064-0030\consus. 10.31.dgn LV:sl-63