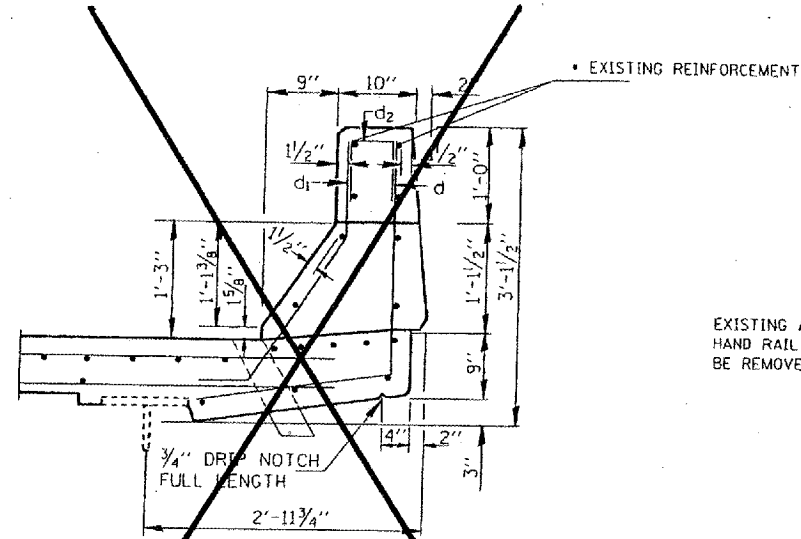
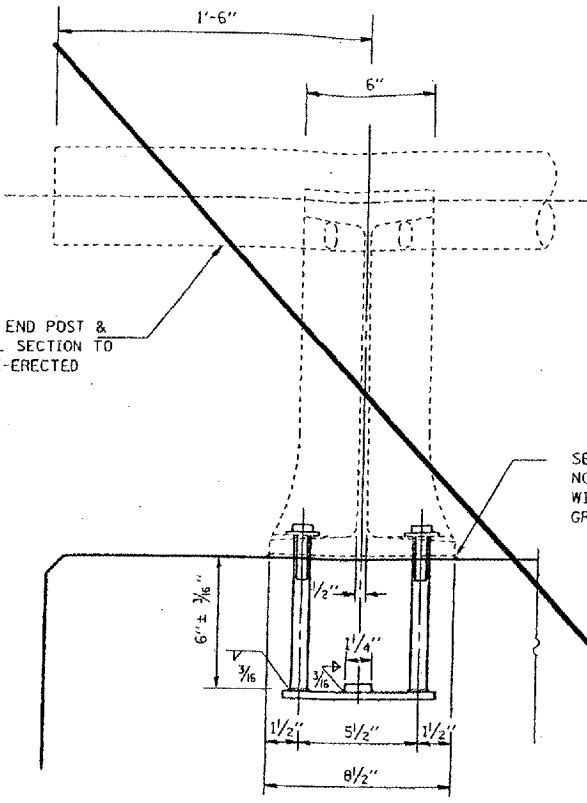


NOTE: d1(E) and d2(E) BARS SPACED AT 12" CTRS.



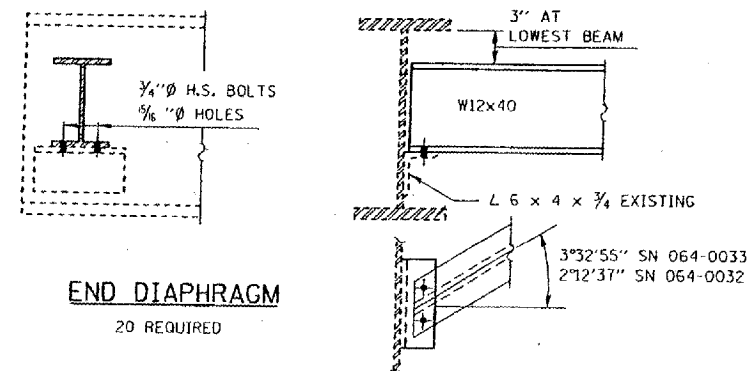
SECTION THRU PARAPET

EXISTING REINFORCEMENT EXTENDING INTO REMOVAL AREA SHALL BE CLEANED, STRAIGHTENED AND INCORPORATED INTO THE NEW CONSTRUCTION. COST INCLUDED IN CONCRETE REMOVAL.



RAIL POST DETAILS

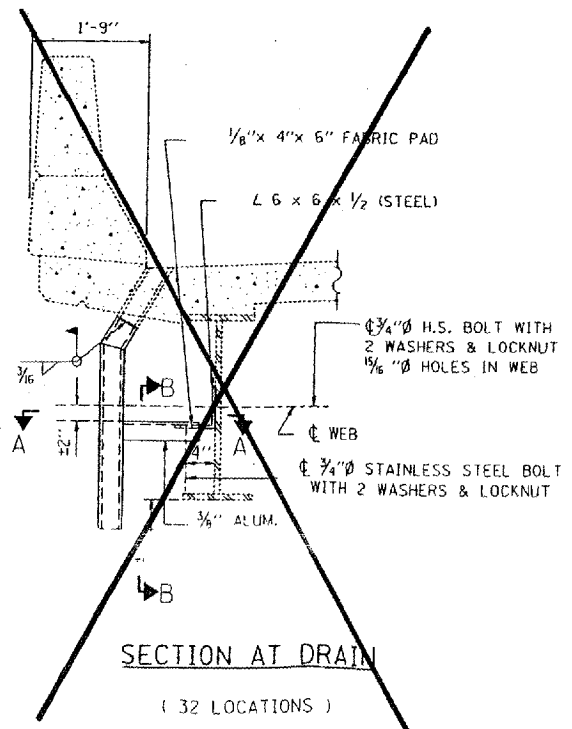
NOTE: RAIL SHALL BE REMOVED AND RE-ERECTED AS NECESSARY TO ALLOW JOINT REPAIR. COST INCLUDED IN CONCRETE REMOVAL.



END DIAPHRAGM

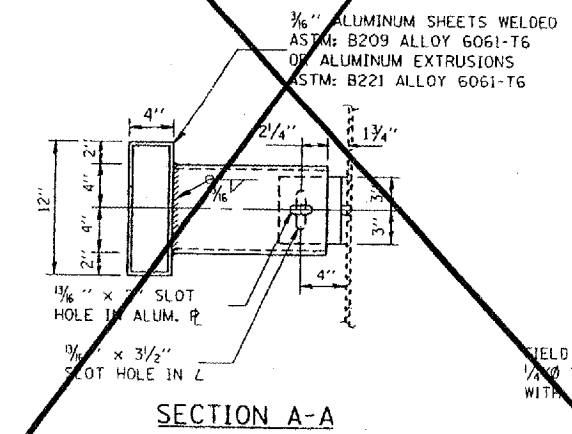
20 REQUIRED

NOTE: TWO HARDENED WASHERS SHALL BE REQUIRED OVER ALL OVERSIZE HOLES FOR DIAPHRAGMS.

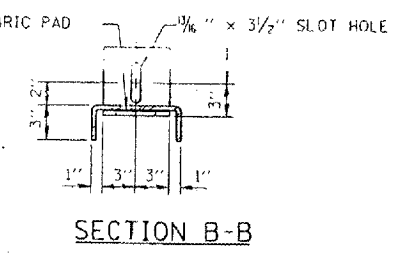


SECTION AT DRAIN

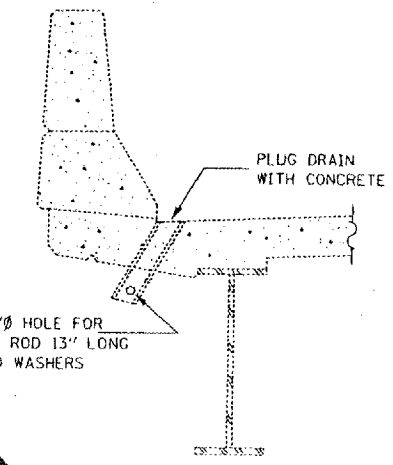
(32 LOCATIONS)



SECTION A-A

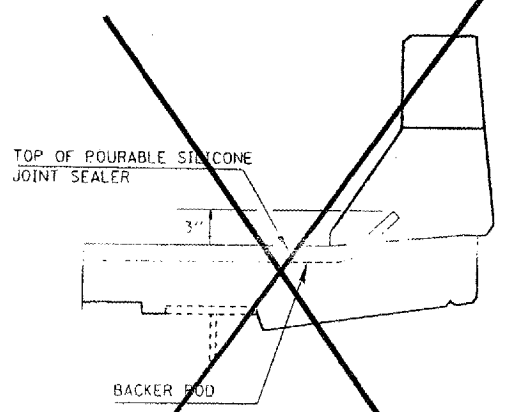


SECTION B-B



DRAIN ELIMINATION DETAIL

(16 LOCATIONS)



SILICONE SEAL AT PARAPET

DESIGNED	J.C.P.
CHECKED	
DRAWN	T. F.
CHECKED	



CONCRETE SUPERSTRUCTURE, SILICONE JOINT DETAIL, DI

FOR INFORMATION ONLY:
 BRIDGE NO. 11 STRUCTURE 064-0032
 BRIDGE NO. 12 STRUCTURE 064-0033

Tue Jul 17 15:27:48 2001
 c:\p\projects\064-0032\consu. 12-33.dgn LV1-63