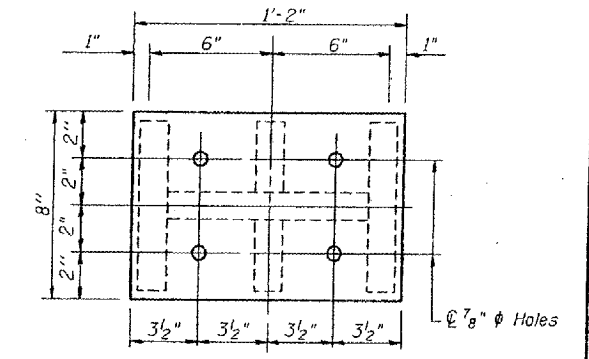
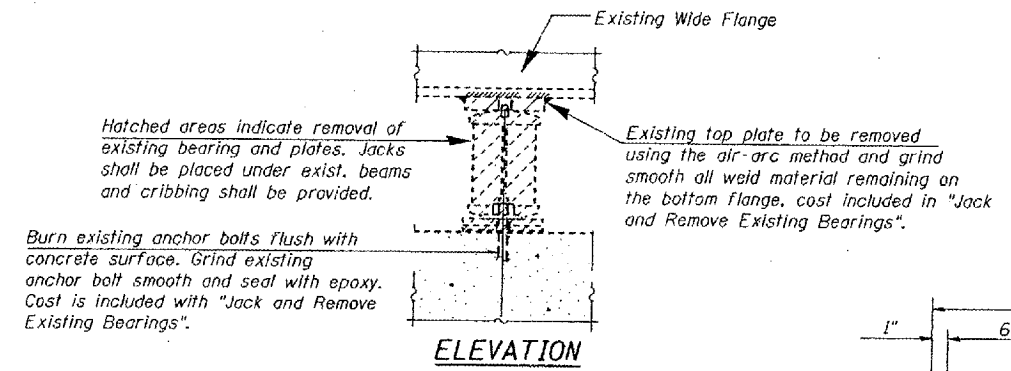
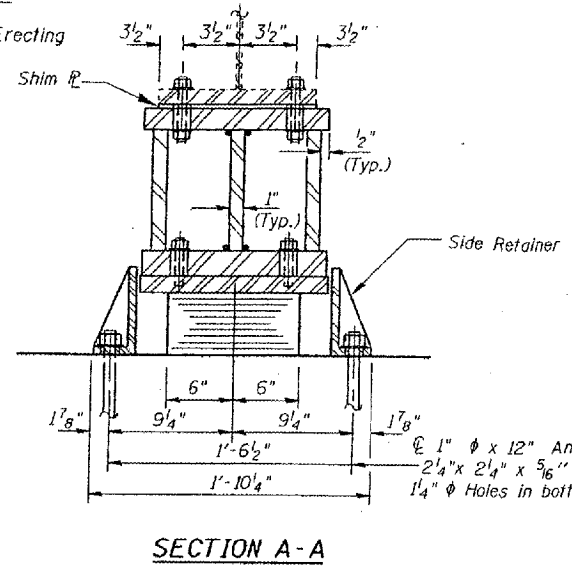
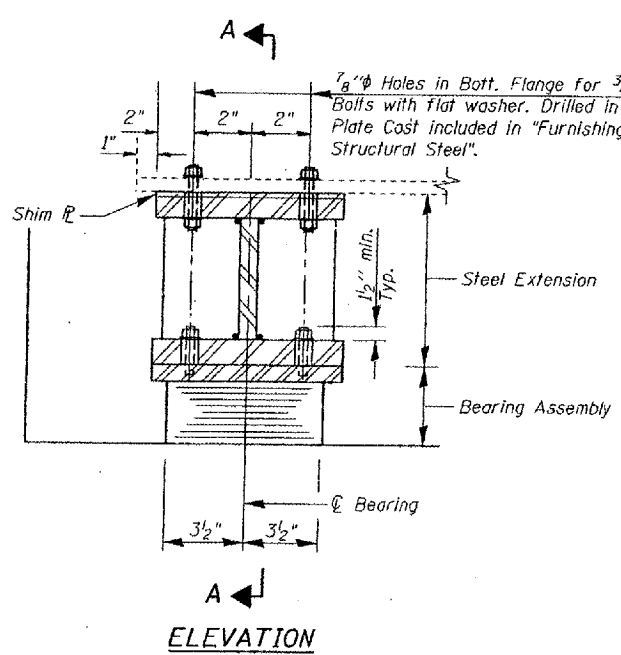
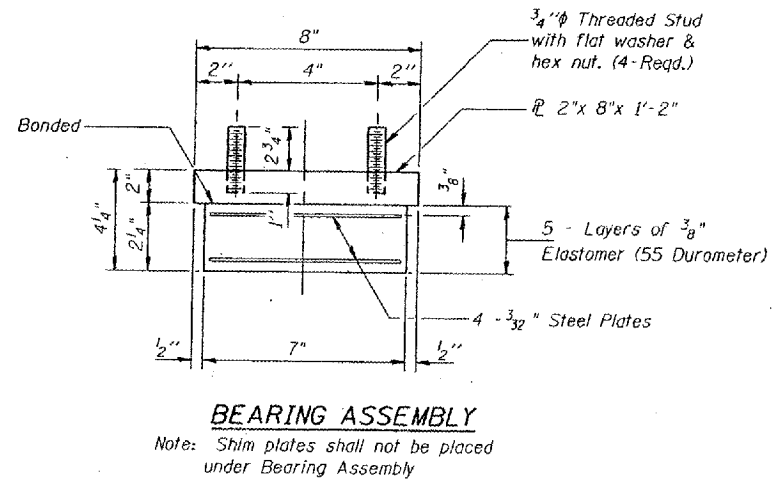


T-24	*	MASSAC	234	218
FED. ROAD DIST. NO. ILLINOIS FED. AID PROJECT				
* 640,2,2-1,3-1,3IRS-1. BSMART FY2002-2				
Sheet 5 of 9 sheets				



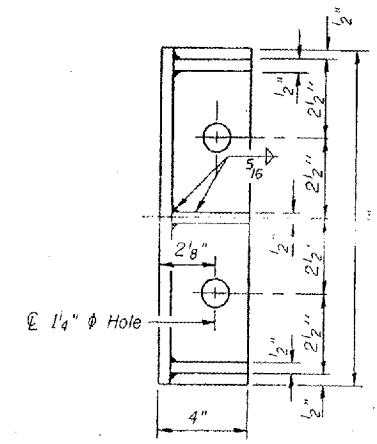
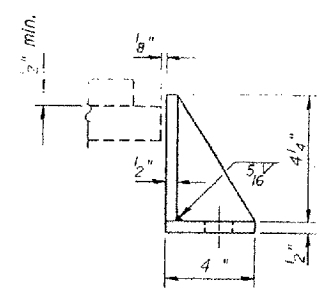
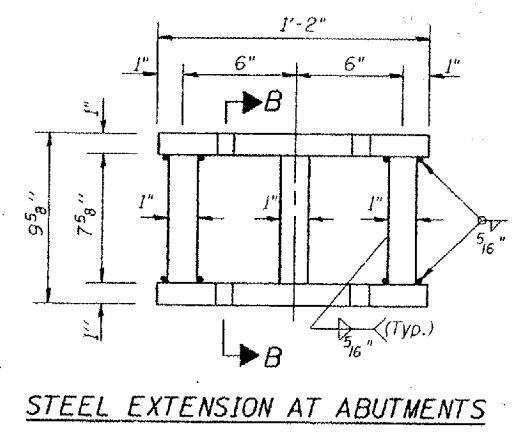
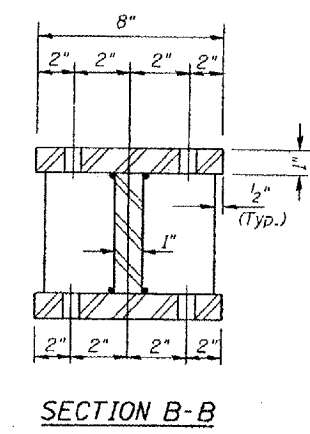
**TYPE I ELASTOMERIC BEARING AT ABUTMENTS**



**\*INTERIOR BEAM REACTION TABLE**

	SERVICE LOADS
R @ (K)	25.4
R $\frac{1}{2}$ (K)	35.7
Imp (K)	10.6
R Total (K)	71.7

\* Min. Jack capacity at each Beam shall be 38 Tons.



**SIDE RETAINER**

Equivalent rolled angle with stiffeners will be allowed in lieu of welded plates. Weight included with Structural Steel.

Notes:  
 Prior to ordering any material, the contractor shall verify in the field all bearing height and hole locations.  
 For anchor bolt installation details see sheet # 6 of 9.  
 New steel extensions, side retainers, connection bolts, anchor bolts, and shim plates are included in "Furnishing and Erecting Structural Steel".

**BILL OF MATERIAL**

ITEM	UNIT	TOTAL
ELASTOMERIC BEARING ASSEMBLY TYPE I	EACH	24

FOR INFORMATION ONLY:

ELASTOMERIC BEARING TYPE I BRIDGE NO. 11 STRUCTURE 064-0032

BRIDGE NO. 12 STRUCTURE 064-0033

DESIGNED	J.C.P.
CHECKED	
DRAWN	T.F.
CHECKED	



Tue Jul 17 16:40:34 2001 c:\p\of\sc\p\smar\p054-0032\type1beow&e3...1.dgn LV1-63