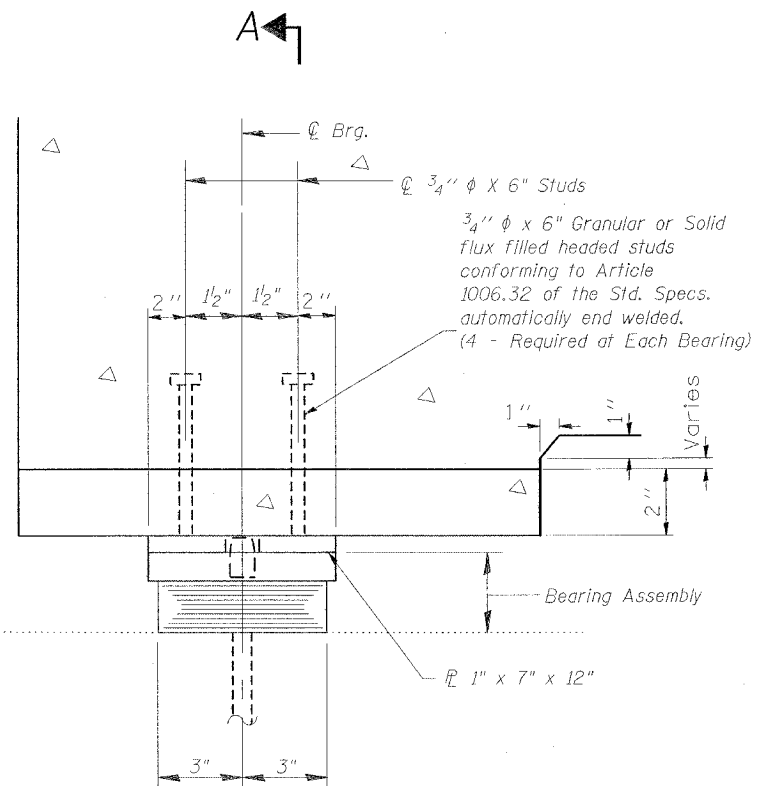


STATE OF ILLINOIS  
DEPARTMENT OF TRANSPORTATION

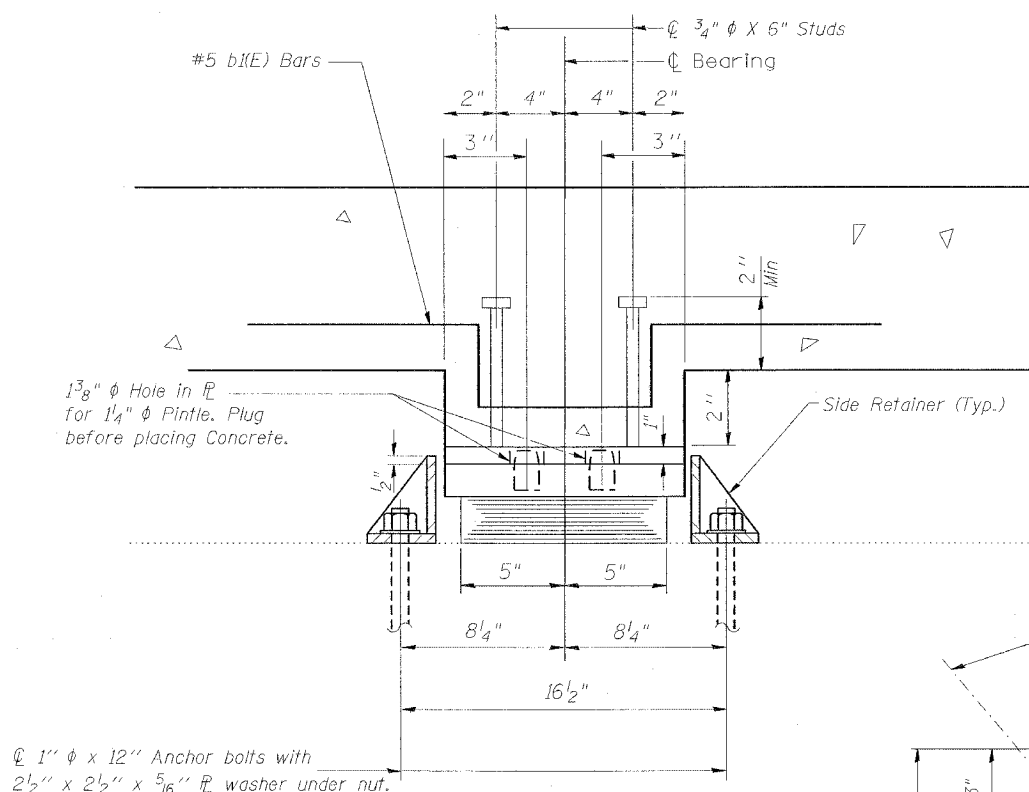
ROUTE NO.	SECTION	COUNTY	TOTAL SHEETS	SHEET NO.
F. A. I. 57		UNION	15	13
FED. ROAD DIST. NO. 7		ILLINOIS	FED. AID PROJECT	
D-9 CONT MAINT FY 05-9 CONTRACT NO. 99900				

BEARING REACTIONS

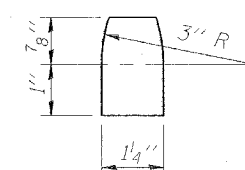
R <sub>L</sub>	(K)	24.6
R <sub>R</sub>	(K)	23.0
Imp.	(K)	6.9
R (Total)	(K)	54.5



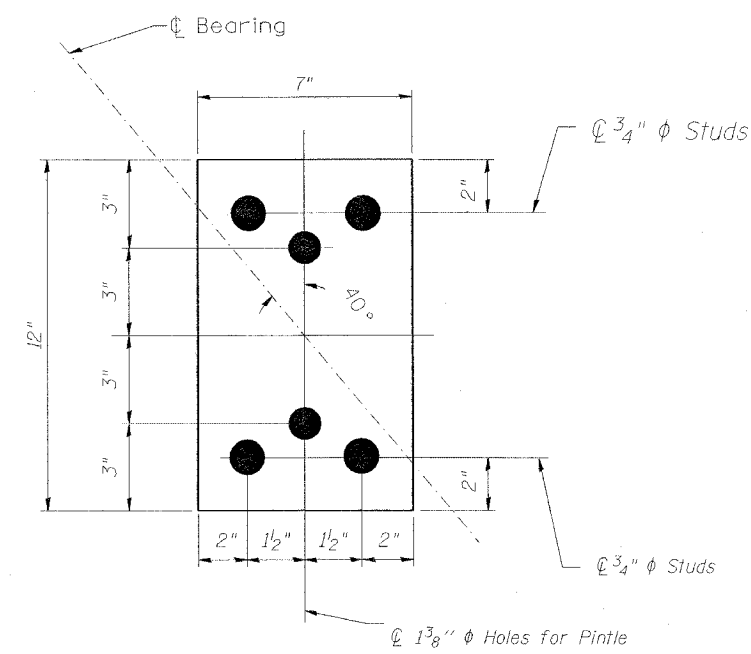
ELEVATION AT ABUTMENT



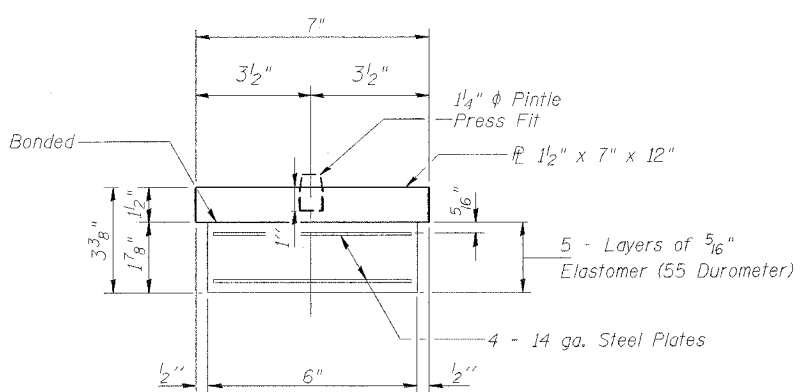
SECTION A-A



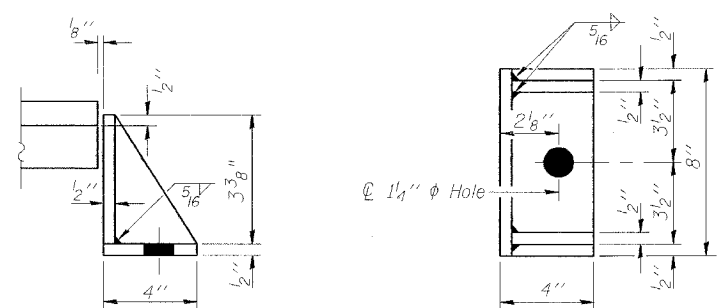
PINTLE



PLAN 1" x 7" x 12"  $\phi$

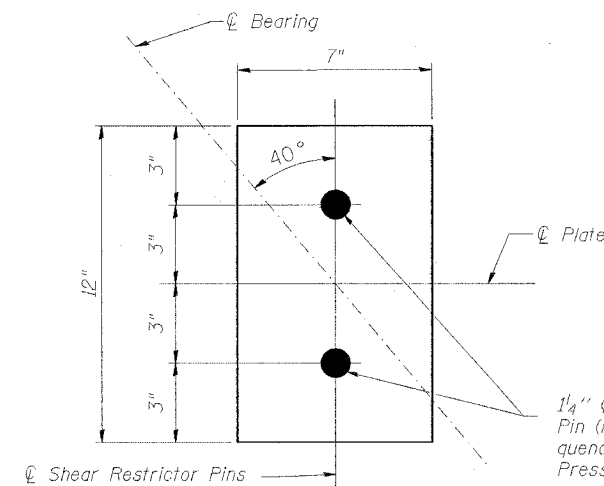


BEARING ASSEMBLY

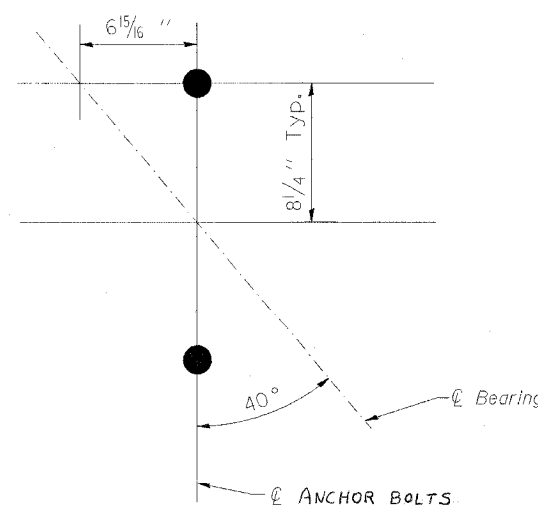


SIDE RETAINER

Equivalent rolled angle with stiffeners will be allowed in lieu of welded plates.



PLAN 1/2" x 7" x 12"  $\phi$



PLAN ANCHOR BOLT LOCATION

TYPE I ELASTOMERIC EXP. BRG.

DESIGNED	RKG
CHECKED	CNT
DRAWN	RKG
CHECKED	CNT

EXAMINED	20
PASSED	ENGINEER OF STRUCTURAL SERVICES
	ENGINEER OF BRIDGES AND STRUCTURES

Notes:  
 New side retainers, embedded  $\phi$ 's, studs, and anchor bolts are included in Furnishing and Erecting Structural Steel.  
 See Sheet 14 of 15 for Anchor Bolt Installation.  
 Prior to ordering any material, the Contractor shall verify in the field all bearing dimensions.  
 Min. jack capacity at each bearing = 19 Tons based on dead load only - the structure closed to all traffic, with no live loads. Otherwise, the min. jack capacity is 28 Tons.

091-0019 BEARINGS  
BILL OF MATERIAL

Item	Unit	Total
Elastomeric Bearing Assembly Type I (Special)	Each	10
Furnishing and Erecting Structural Steel	Pound	540

BEARING DETAILS  
 ROUTE I-57 AT DONGOLA INTERCHANGE  
 ON RAMP "C" 219 OVER STREAM  
 STRUCTURE 091-0019  
 UNION COUNTY