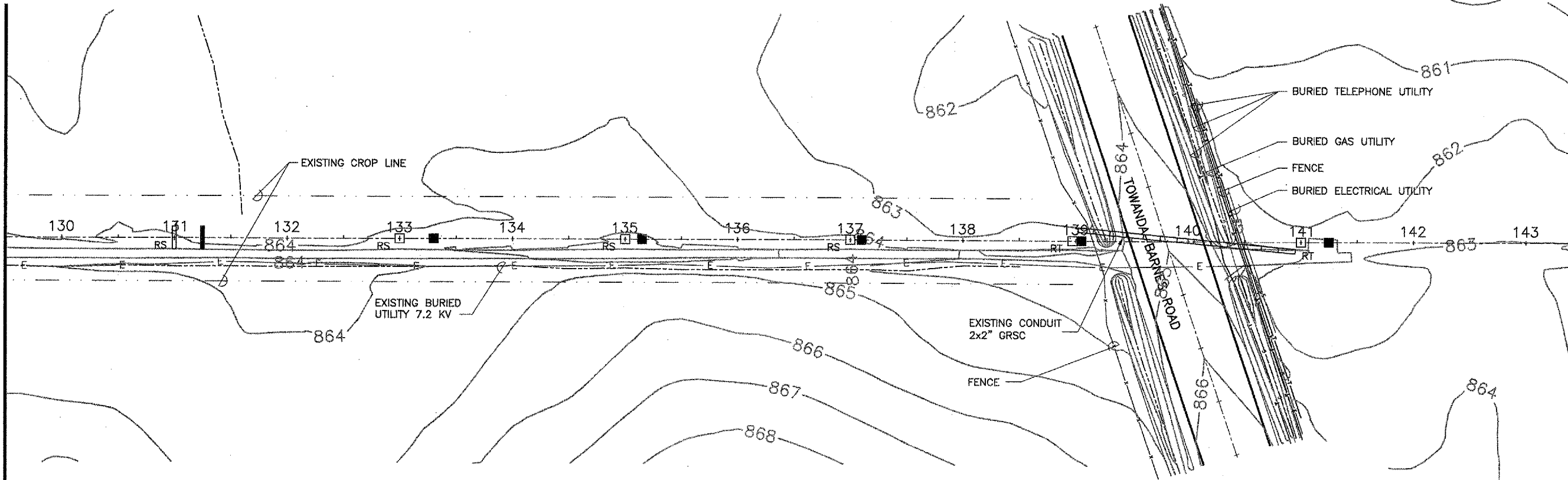
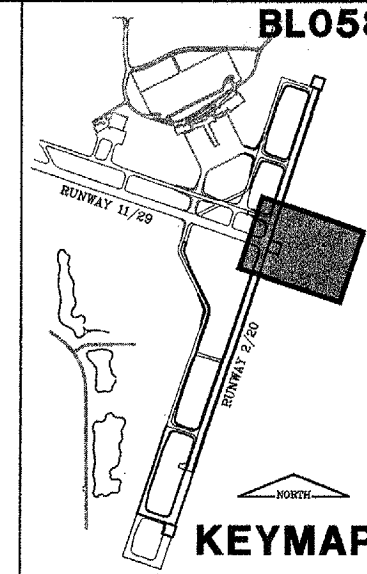
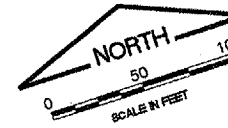


IMAGE FILES

MATCHLINE - STA. 129+50



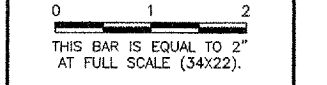
LEGEND
 SEE EXISTING CONDITIONS AND REMOVALS LEGEND
 AND NOTES SHEET FOR LEGEND.



BLO58

K:\Bloomington\p\03085\draw\sheet\1
 FILE: 010_EXIST_COND_REMOVALS_2.DWG
 LAYOUT: Layout1
 UPDATE BY: dallan
 SURVEY BOOK #
 DATE: Thu 10/28/04 2:09pm
 XREF DWG: DPABase.dwg
 PROJCEO.dwg
 TB.DWG
 CLNTINF.DWG
 KEY.dwg

REVISIONS		
NUMBER	BY	DATE



**BLOOMINGTON-NORMAL AIRPORT AUTHORITY
 CENTRAL ILLINOIS REGIONAL AIRPORT
 BLOOMINGTON, ILLINOIS**

INSTALL RUNWAY 29 MALSR

**EXISTING CONDITIONS
 AND REMOVALS 2**

CMT
 CRAWFORD, MURPHY & TILLY, INC.
 CONSULTING ENGINEERS
 © Copyright CMT, Inc.

DESIGN BY:	RLV
DRAWN BY:	CMT
CHECKED BY:	RLV
APPROVED BY:	RLV
DATE:	12/25/2004
JOB No:	03085-03-00