

IMAGE FILES:

REVISIONS

NUMBER	BY	DATE

0 1 2
 THIS BAR IS EQUAL TO 2" AT FULL SCALE (34X22).

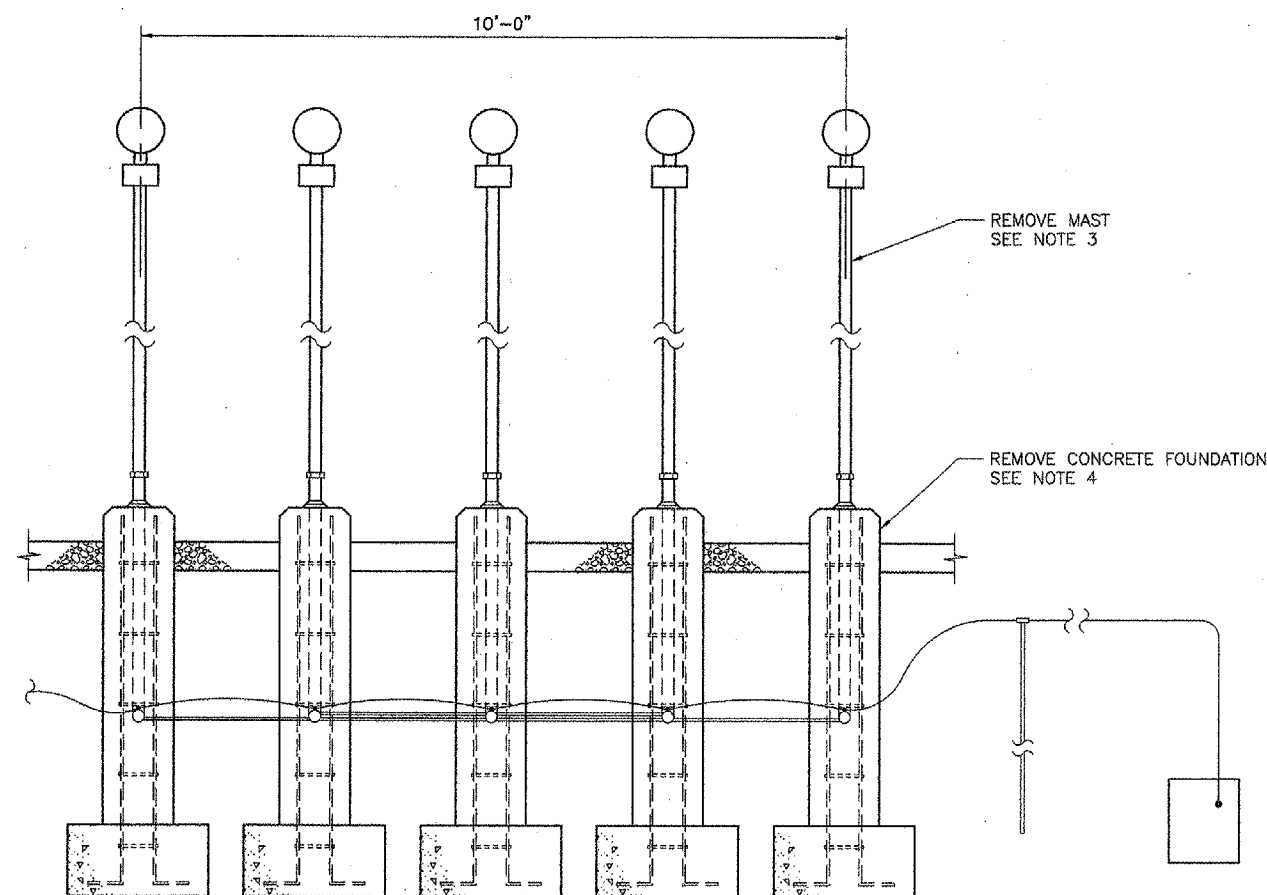
BLOOMINGTON-NORMAL AIRPORT AUTHORITY
 CENTRAL ILLINOIS REGIONAL AIRPORT
 BLOOMINGTON, ILLINOIS

INSTALL RUNWAY 29 MALSR

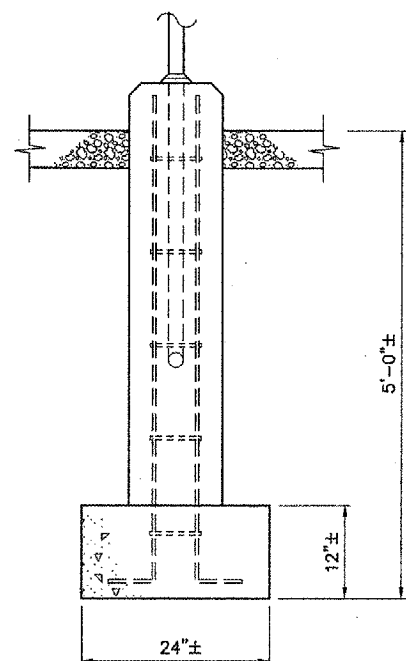
APPROACH LIGHT REMOVAL DETAIL

CMT
 CRANFORD, MURPHY & TILLY, INC.
 CONSULTING ENGINEERS
 © Copyright CMT, Inc.

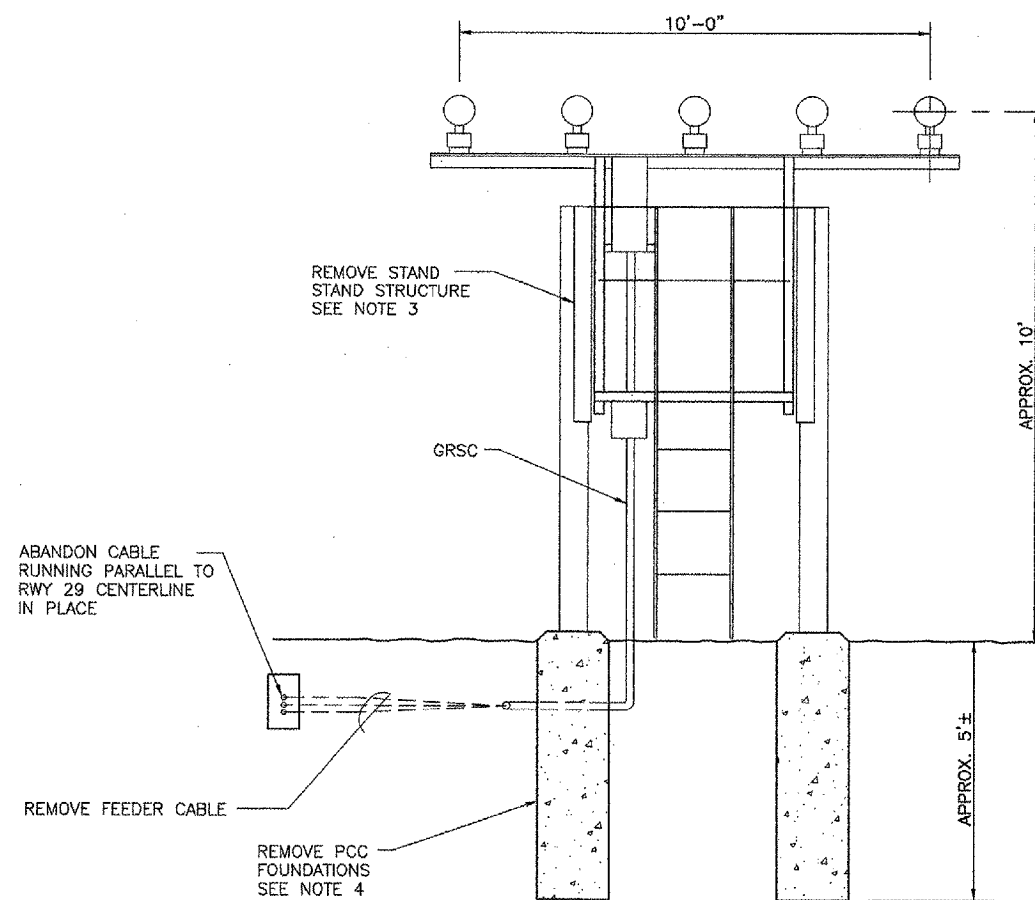
DESIGN BY:	TM
DRAWN BY:	CMT
CHECKED BY:	RLV
APPROVED BY:	RLV
DATE:	12/25/2004
JOB No:	03085-03-00



APPROACH LIGHT MAST STRUCTURE
 N.T.S.
 (INCLUDED IN MALSR REMOVAL)



MAST STRUCTURE FOUNDATION
 N.T.S.



APPROACH LIGHT STAND STRUCTURE
 N.T.S.
 (INCLUDED IN MALSR REMOVAL)

NOTES

1. MALSR REMOVAL INCLUDES REMOVAL OF TWO APPROACH LIGHT STAND STRUCTURES, FOUR APPROACH LIGHT MAST STRUCTURE, TWO SEQUENCE FLASHER TOWER STRUCTURES, THREE SEQUENCE FLASHER STAND STRUCTURES, FOUNDATIONS FOR STRUCTURES, JUNCTION BOXES, AGGREGATE, CONDUITS, GROUND RODS AND INCIDENTALS.
2. PRIOR TO REMOVAL, DISCONNECT ALL POWER SUPPLIES.
3. REMOVE AND DISPOSE MASTS AND STANDS.
4. REMOVE FOUNDATION, PCC PADS, GROUND RODS AND BACKFILL WITH COMPACTED SOIL, SAND OR GRAVEL.