

NOTES:

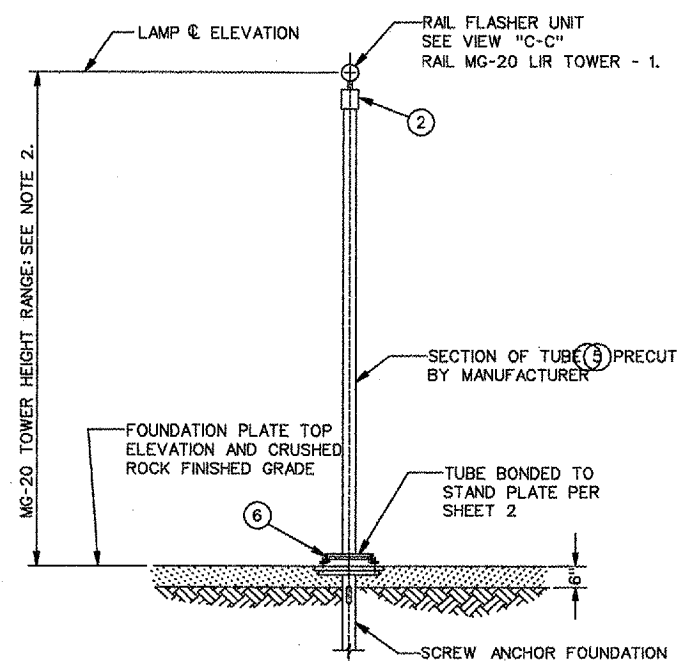
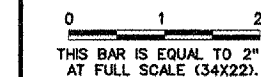
1. THE STANDARD STRUCTURAL PARTS OF THE TILTING LIR MG-20, STRUCTURE IS IDENTIFIED BELOW. PARTS 3 THROUGH 6 MATCH THE NEW ITEM NUMBERS OF PAGE 1-11 OF INSTRUCTION BOOK T16850.77. FOR ASSEMBLY INSTRUCTIONS, SEE SHEET 2.

STANDARD STRUCTURAL PART DESCRIPTION

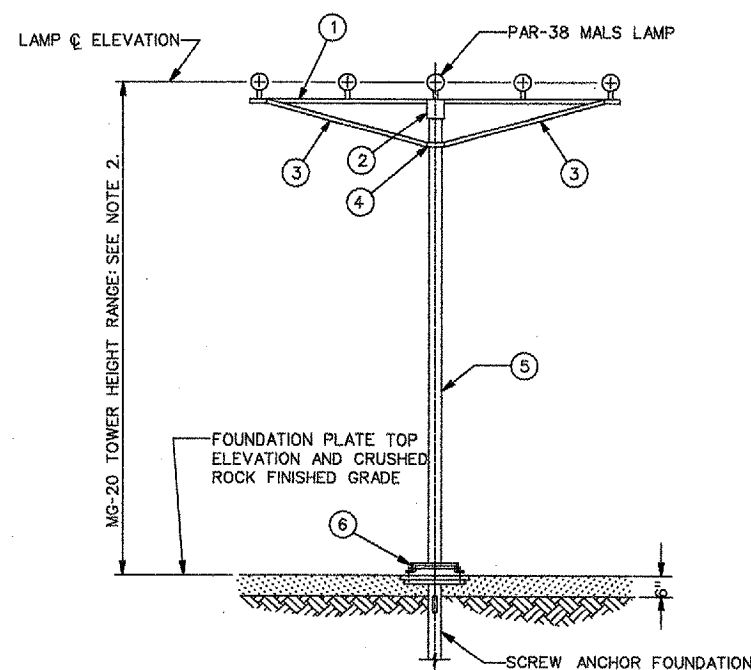
- ① MALS TEE BAR ASSEMBLY
- ② TUBE CAP ASSEMBLY
- ③ TEE BRACE ASSEMBLY
- ④ TEE BRACE CLAMP ASSEMBLY
- ⑤ FIBERGLASS TUBE "A", 20' LONG
- ⑥ MOUNTING STAND ASSEMBLY FOR MG-20

2. TOWER HEIGHT FOR EACH MALS LIGHT STRUCTURE IS SHOWN IN TABLE ON PLAN AND PROFILE - 2 .

REVISIONS		
NUMBER	BY	DATE



DETAIL "A"
 LIR MG-20 RAIL FLASHER TOWER
 ELEVATION
 (STA. 133+20 THROUGH STA. 141+25)



DETAIL "D"
 LIR MG-20 T-BAR TOWER
 ELEVATION
 (STA. 127+25 THROUGH STA. 131+25)

BLOOMINGTON-NORMAL AIRPORT AUTHORITY
 CENTRAL ILLINOIS REGIONAL AIRPORT
 BLOOMINGTON, ILLINOIS

LIR ASSEMBLY DETAILS - 1

CMT
 CRAWFORD, MURPHY & TILLY, INC.
 CONSULTING ENGINEERS
© Copyright CMT, Inc.

DESIGN BY:	TM
DRAWN BY:	CMT
CHECKED BY:	RLV
APPROVED BY:	RLV
DATE:	12/25/2004
JOB No:	030850300