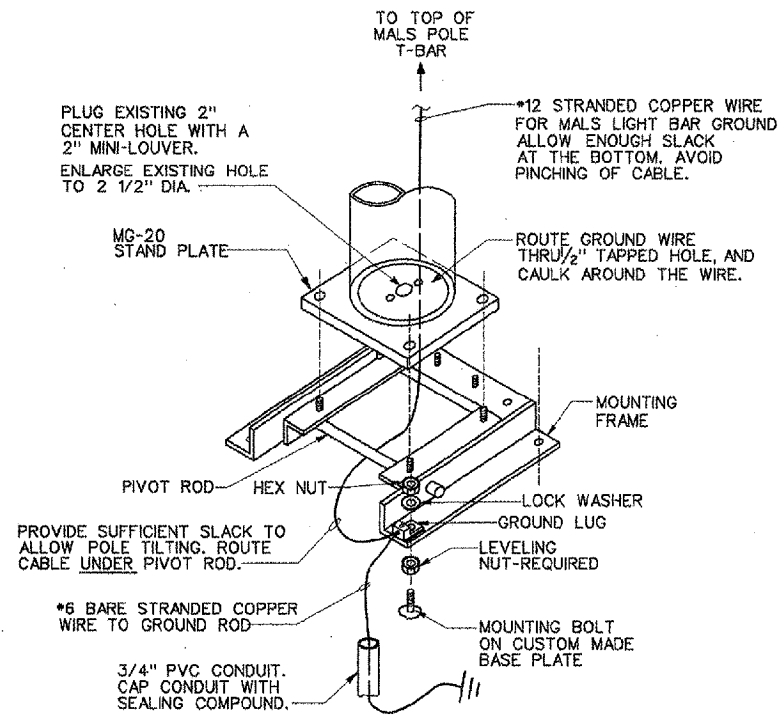


THESE STRIPS SHALL BE INSTALLED 5' ABOVE GRADE AT ALL MALS STATIONS. FOR OTHER STATIONS AND AIMING ANGLES, SEE TABLE IN PLAN AND PROFILE - 2.

3 DETAIL
 NOT TO SCALE

STATION AND AIMING ANGLE IDENTIFICATION STRIPS



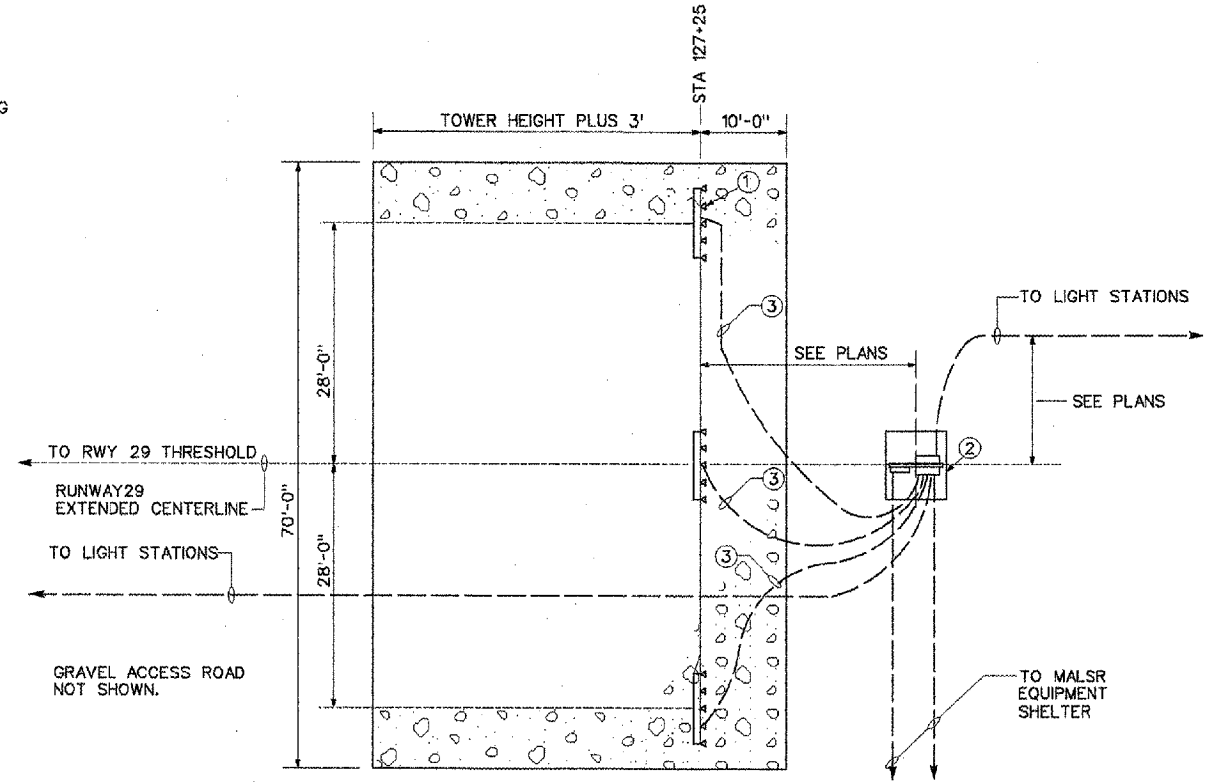
T-BAR MOUNTING STAND GROUNDING DETAIL (TYPICAL)

NUMBERED LEGEND: 1- INSTALL

- 1 PER DRAWING MALS MG-20 LIR TOWER - 1, 2, - 3.
- 2 PER DRAWING DISTRIBUTION AND MONITORING RACK.
- 3 POWER CABLES PER DRAWING SYSTEM WIRING DIAGRAM - 1, - 2.

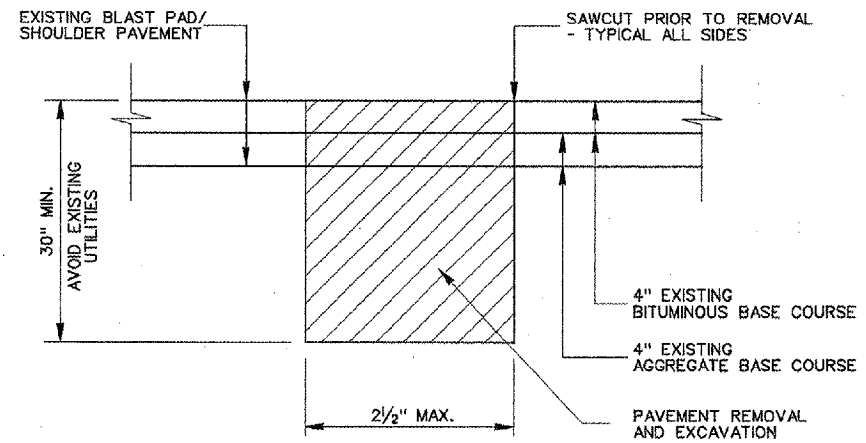
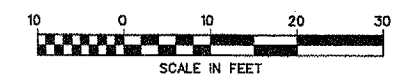
NOTE:

IN THE CRUSHED ROCK PLOT AREA, TOPSOIL IS REMOVED "TO A DEPTH OF 6", GEOTEXTILE FABRIC IS PLACED OVER THE EXCAVATED AREA, AND A MINIMUM DEPTH OF CRUSHED ROCK IS PLACED AND COMPACTED. THE FINISHED CRUSHED ROCK SURFACE SHALL HAVE NO WATER-RETAINING DEPRESSIONS.



DETAIL "TB"

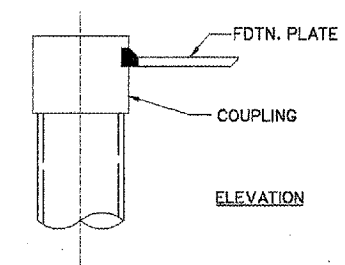
STA. 127+25 LIGHT BAR PLAN



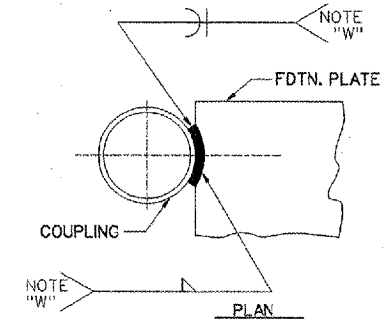
BLAST PAD/SHOULDER PAVEMENT AND CONDUIT INSTALLATION

NOT TO SCALE

- NOTES:
- 1.) THESE ITEMS SHALL BE INCIDENTAL TO THE MALS THRESHOLD BAR.



ELEVATION



PLAN

NOTE "W"

THE WELD MAY BE A FIELD WELD OR A SHOP WELD, AT THE CONTRACTOR'S OPTION. ATTACH COUPLING TO FDTN. PLATE WITH A 1/4" WELD OF ONE CONTINUOUS BEAD TRANSITIONING FROM A FLARE BEVEL WELD AT THE EDGE OF THE PLATE, TO A FILLET WELD AT THE TOP OF THE PLATE, TO A FLARE BEVEL WELD AT THE EDGE OF THE PLATE AT THE OTHER SIDE OF THE COUPLING.

DETAIL "W" WELD

REVISIONS		
NUMBER	BY	DATE

0 1 2
 THIS BAR IS EQUAL TO 2" AT FULL SCALE (34x22).

BLOOMINGTON-NORMAL AIRPORT AUTHORITY
 CENTRAL ILLINOIS REGIONAL AIRPORT
 BLOOMINGTON, ILLINOIS

MISCELLANEOUS DETAILS - 1

CMT
 CRAWFORD, MURPHY & TILLY, INC.
 CONSULTING ENGINEERS

DESIGN BY:	TM
DRAWN BY:	CMT
CHECKED BY:	RLV
APPROVED BY:	RLV
DATE:	12/25/2004
JOB No:	030850300

01/18/2005 K:\BloomingtonAp\0308503\draw\sheet\MISCELLANEOUS_DETAILS_1.dgn