

MAIN DIST. PANEL T-HANGAR UNITS #21 THRU #32 SCHEDULE

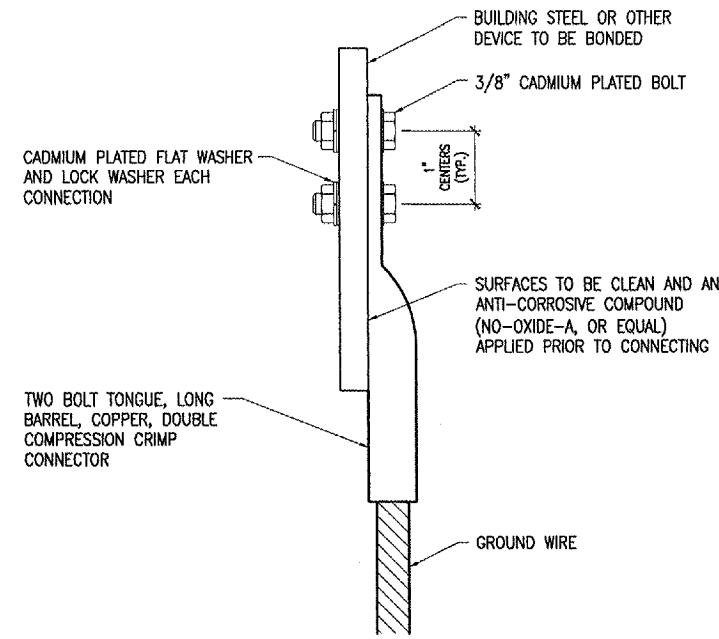
CKT #	DUTY	SIZE		SIZE	DUTY	CKT #
1	MAIN BREAKER	125A 2P		60A 2P	TRANSIENT VOLTAGE SURGE SUPPRESSOR	2
3						4
5	SHELTER AT LAKE	100A 2P				6
7						8
9	T-HANGAR UNITS	100A 2P				10
11						12
13	BLANK					14
15	BLANK					16
17	BLANK					18
19	BLANK					20
21	BLANK					22
23	BLANK					24
25	BLANK					26
27	BLANK					28
29	BLANK					30

GND
S/N
GND

225 AMP, 120/240 VAC, 1 PHASE, 3 WIRE, 30 CKT PANELBOARD WITH MAIN LUGS IN A NEMA 12 ENCLOSURE. INCLUDE SEPARATE GROUND BAR KITS. MAIN BREAKER AND ALL BRANCH BREAKERS SHALL BE BOLT ON TYPE WITH 10,000 AIC AT 120/240 VAC. PANELBOARD SHALL BE SQUARE D CAT. NO. NQ0D30L225CU WITH MH32WP NEMA 12 ENCLOSURE, OR APPROVED EQUAL.

NOTES

- PANELBOARD BUS SHALL BE BRACED FOR 10,000 AMPS SYMMETRICAL MINIMUM AT 240 VAC.
- PANELBOARD BUS SHALL BE COPPER.
- ALL FEEDER & BRANCH BREAKERS SHALL HAVE INTERRUPTING RATING OF 10,000 AIC MINIMUM AT 120/240 VAC.
- PANEL SHALL ACCOMMODATE BRANCH/FEEDER BREAKERS UP TO 150 AMP FRAME SIZE.
- BOTTOM OF PANELBOARD TUB SHALL BE 20" MINIMUM ABOVE THE FLOOR.



2 HOLE LONG BARREL COMPRESSION LUG TABLE

WIRE SIZE	BURNDY CAT. NO.	THOMAS & BETTS CAT. NO.
#6 AWG STRANDED	YA6C-2TC3B	256-30695-1158
#2 AWG STRANDED	YA2C-2TC3B	256-30695-1160

- NOTES**
- ALL CONNECTIONS TO BUILDING STEEL SHALL BE WITH 2 HOLE TONGUE LONG BARREL COMPRESSION LUGS BOLTED TO THE BUILDING STEEL.
 - ALL CONNECTIONS SHALL BE COATED WITH A CORROSION PREVENTATIVE COMPOUND (NO-OXIDE-A, OR EQUAL) BEFORE JOINING. ALL COPPER BUS BARS SHALL BE CLEANED PRIOR TO MAKING CONNECTIONS TO REMOVE SURFACE OXIDATION. CLEAN SURFACES, OF RESPECTIVE DEVICES TO BE BONDED, TO BARE METAL, PER NEC 250-12.

GROUNDING LUG CONNECTION DETAIL

**INFORMATION & DETAILS
SHOWN ON THIS SHEET IS
FOR BID ALTERNATE NO. 2**

MAINT. BLDG MAIN DISTRIBUTION PANEL "M1" SCHEDULE

CKT #	DUTY	SIZE		SIZE	DUTY	CKT #	
1	PANEL M4	100A 3P		60A 3P	TRANSIENT VOLTAGE SURGE SUPPRESSOR	2	
3	FUEL SYSTEM PANEL M6	100A 3P			60A 2P	FUSE PANEL M5	4
5	208 VAC TO 240 VAC STEP-UP TRANSFORMER	225A 3P			60A 3P	LIGHTING PANEL M2	6
	SPARE SPACE FOR ADDITIONAL BREAKERS					SPARE SPACE FOR ADDITIONAL BREAKERS	

S/N
GND

400 AMP, 240 VAC, 3 PHASE, POWER DISTRIBUTION PANEL WIRED FOR 208Y/120 VAC, 3 PHASE, 4 WIRE OPERATION, WITH MAIN LUGS AND 45" OF CIRCUIT BREAKER MOUNTING SPACE IN A NEMA 1 SURFACE MOUNT ENCLOSURE. INCLUDE SEPARATE GROUND BAR KITS. PANELBOARD SHALL BE SQUARE D I-LINE, CAT. NO. HCP SERIES OR APPROVED EQUAL WITH BOX, TRIM, & DOOR.

NOTES

- PANELBOARD BUS SHALL BE BRACED FOR 25,000 AMPS SYMMETRICAL MINIMUM AT 240 VAC.
- PANELBOARD BUS SHALL BE COPPER.
- ALL FEEDER & BRANCH BREAKERS SHALL HAVE INTERRUPTING RATING OF 25,000 AIC MINIMUM AT 240 VAC.
- PANEL SHALL ACCOMMODATE BRANCH/FEEDER BREAKERS UP TO 400 AMP FRAME SIZE.
- BOTTOM OF PANELBOARD TUB SHALL BE 19" ABOVE THE FLOOR.

BY		REVISION		DATE	
 MT. VERNON, ILLINOIS					
I.L. PROJ.: MN-XXXX A.I.P. PROJ.: 3-17-00XX-XX					
I&E Project No. 819-05RWYD 0800 Filename E-606.DWG Scale NONE Date:		LAYOUT KNL 12/13/04 DRAWN MV 12/13/04 REVIEWED CAH 01/14/05			
 Hanson Professional Services Inc. 1524 South Sixth Street Springfield, Illinois 62703-2886 Offices Nationwide					
REHABILITATE RUNWAY 5-23			PANEL SCHEDULES AND DETAILS		
27					
27 of 27 sheets					