

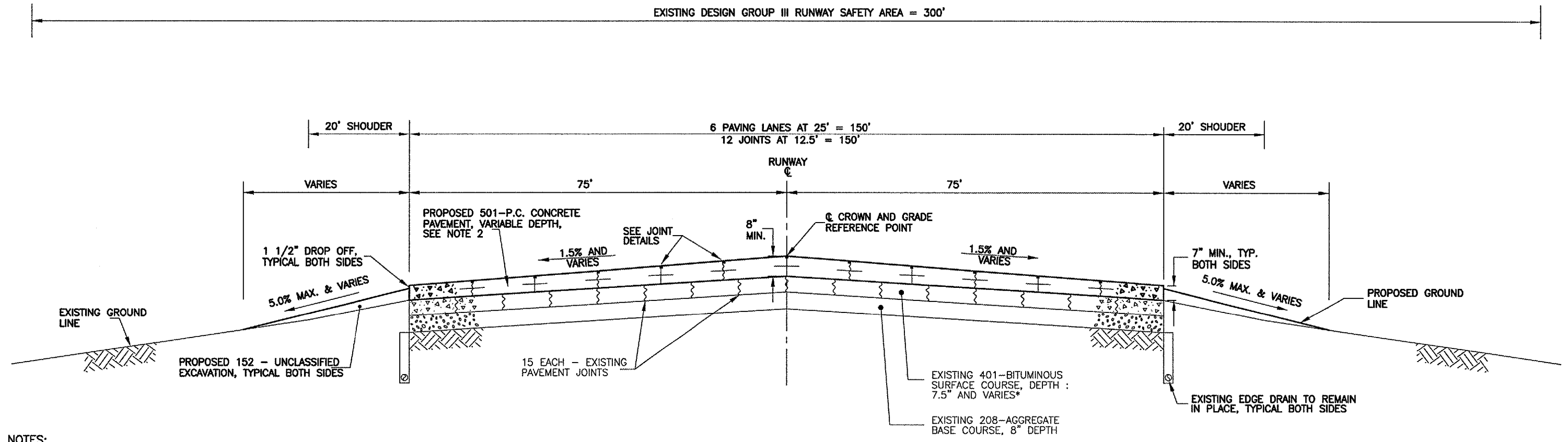
QU093

G:\AIRPORT\A04T015\TYP.DWG 06-25-04

AIRCRAFT APPROACH CATEGORY B
AIRPLANE DESIGN GROUP III
VISUAL RUNWAY

PROPOSED TYPICAL SECTION
RUNWAY 5-23, STA. 54+10 TO STA. 60+00
VARIABLE DEPTH P. C. CONCRETE OVERLAY

EXISTING DESIGN GROUP III RUNWAY SAFETY AREA = 300'



NOTES:

1. NO CONCRETE PAVEMENT SHALL BE INSTALLED UNTIL THE UNDERLYING SURFACE HAS BEEN CLEANED, PREPARED, DAMPENED, AND ACCEPTED BY THE ENGINEER. SEE SPECIAL PROVISIONS FOR ADDITIONAL INFORMATION.

2. MINIMUM P.C.C. PAVEMENT DEPTH:
RT. 75' TO RT. 25' = 7"
RT. 25' TO LT. 25' = 8"
LT. 25' TO LT. 75' = 7"

THE ACTUAL DEPTH OF THE PROPOSED P.C. CONCRETE PAVEMENT VARIES FROM 0.58' TO APPROXIMATELY 0.90'. THIS PAVEMENT SHALL BE PAID FOR UNDER CONTRACT ITEM 501508, 8" PCC PAVEMENT PER SQUARE YARD REGARDLESS OF THE ACTUAL THICKNESS INSTALLED.

3. * = EXISTING BIT. PVMT. DEPTH:

STA. 15+40 TO STA. 45+55 : 7.5"
STA. 45+55 TO STA. 49+06.4 : VARIES FROM 7.5" TO 16"
STA. 49+06.4 TO STA. 51+29.1 : 16" (RUNWAY 9-27)
STA. 51+29.1 TO STA. 53+80 : VARIES FROM 16" TO 7.5"
STA. 53+80 TO STA. 63+81.46 : 7.5"

