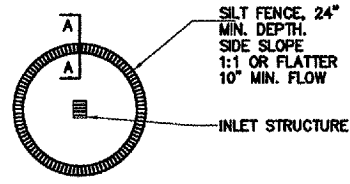
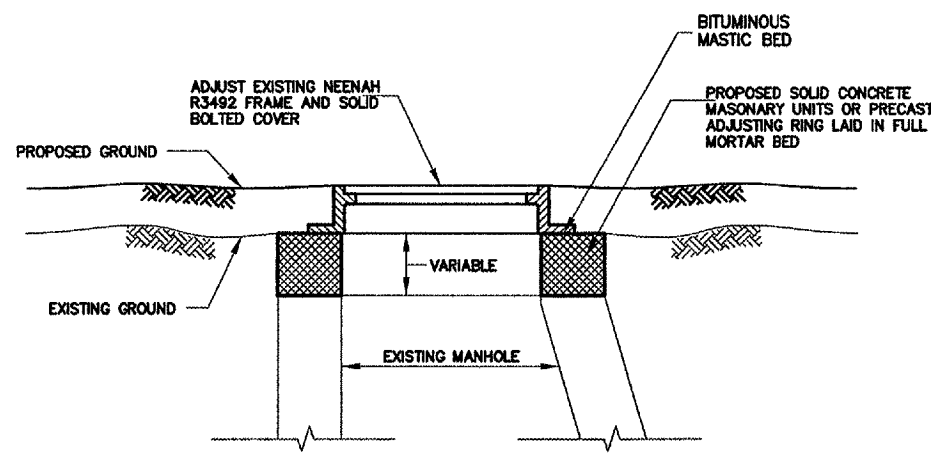


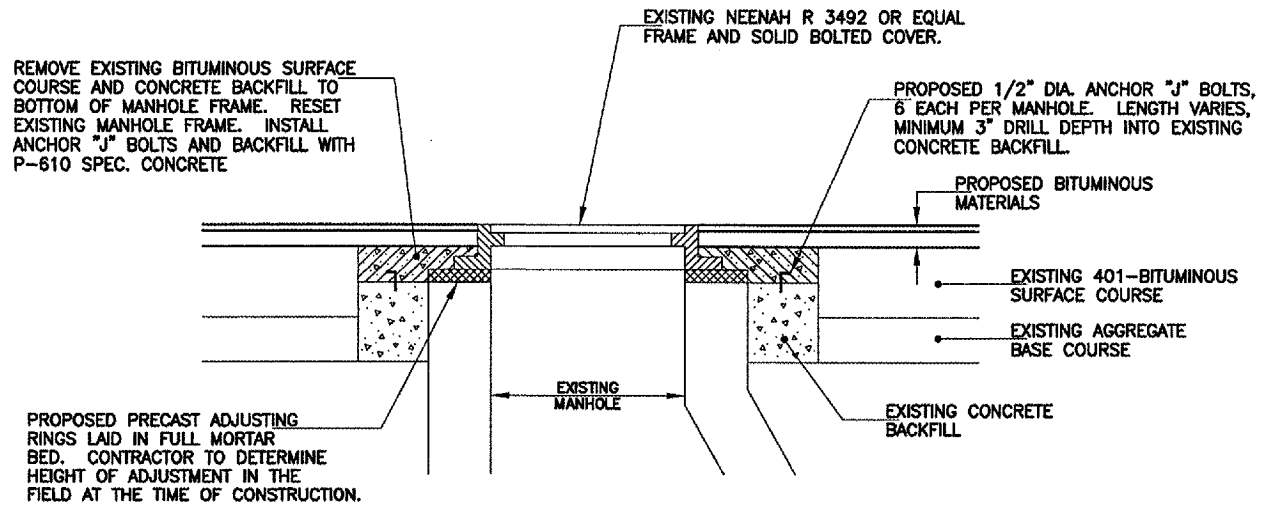
QU093



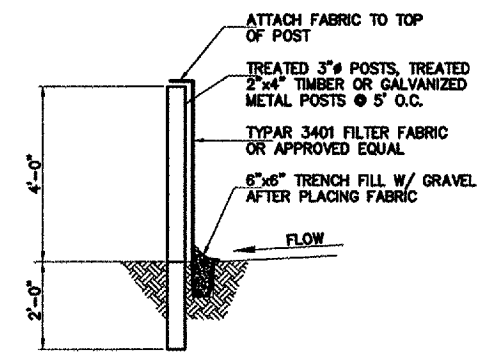
TEMPORARY SEDIMENT TRAP  
 AT ALL INLET STRUCTURES



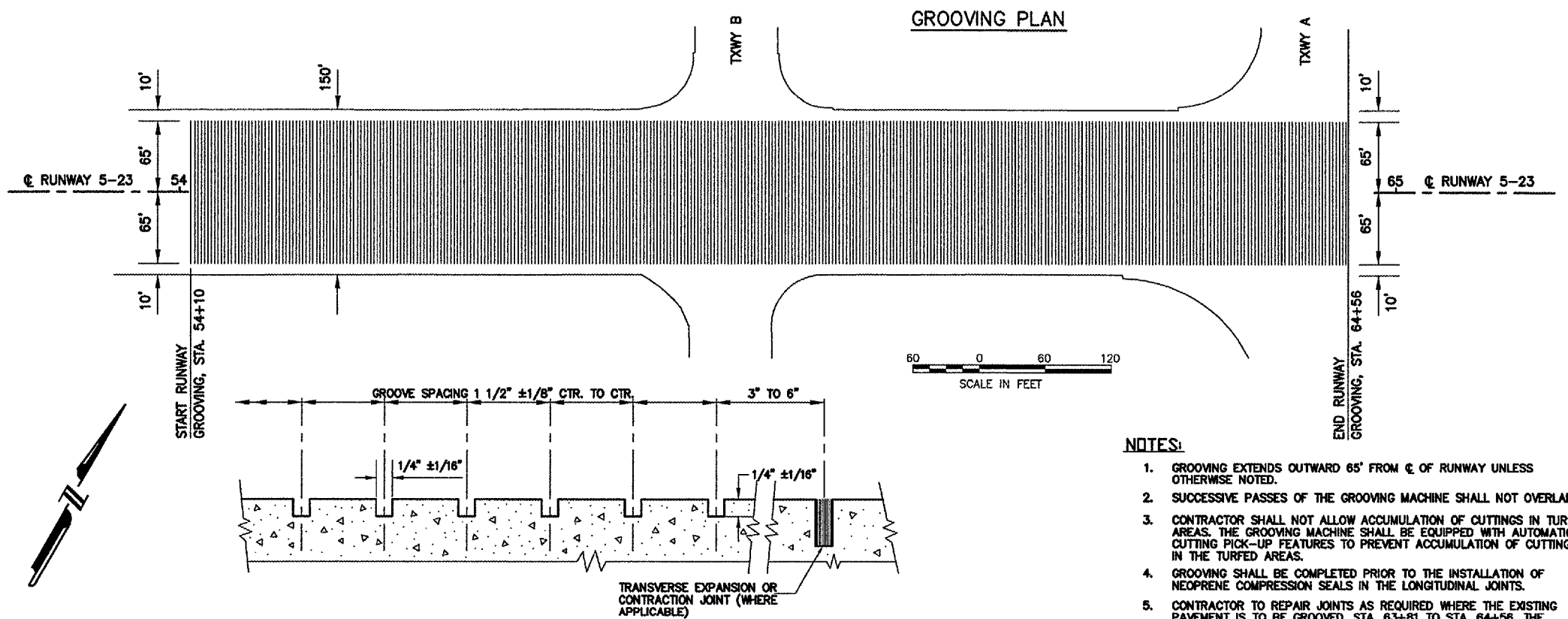
TYPICAL DETAIL - MANHOLE  
 ADJUST - IN TURF



TYPICAL DETAIL - MANHOLE  
 ADJUSTMENT IN PAVEMENT



SECTION A-A  
 SILT FENCE DETAIL  
 NOT TO SCALE



GROOVE DIMENSIONS  
 N.T.S.

NOTES:

- GROOVING EXTENDS OUTWARD 65' FROM C/L OF RUNWAY UNLESS OTHERWISE NOTED.
- SUCCESSIVE PASSES OF THE GROOVING MACHINE SHALL NOT OVERLAP.
- CONTRACTOR SHALL NOT ALLOW ACCUMULATION OF CUTTINGS IN TURFED AREAS. THE GROOVING MACHINE SHALL BE EQUIPPED WITH AUTOMATIC CUTTING PICK-UP FEATURES TO PREVENT ACCUMULATION OF CUTTINGS IN THE TURFED AREAS.
- GROOVING SHALL BE COMPLETED PRIOR TO THE INSTALLATION OF NEOPRENE COMPRESSION SEALS IN THE LONGITUDINAL JOINTS.
- CONTRACTOR TO REPAIR JOINTS AS REQUIRED WHERE THE EXISTING PAVEMENT IS TO BE GROOVED, STA. 63+81 TO STA. 64+56. THE CONTRACTOR SHALL RE-SEAL ALL JOINTS DAMAGED BY THE PAVEMENT GROOVING OPERATIONS. THE JOINT SEALER SHALL MEET THE REQUIREMENTS OF ASTM D3405 - JOINT SEALANT, HOT - POURED. COSTS TO BE INCLUDED IN THE CONTRACT UNIT PRICE FOR PAVEMENT.

S:\airport\AD4T015\MISC.dwg, 1/26/2005 11:44:12 AM, jeffm