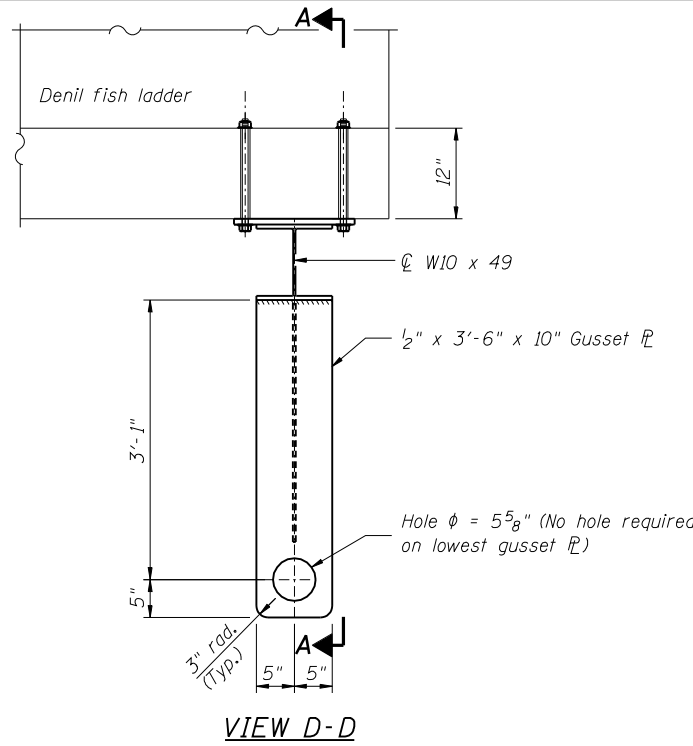
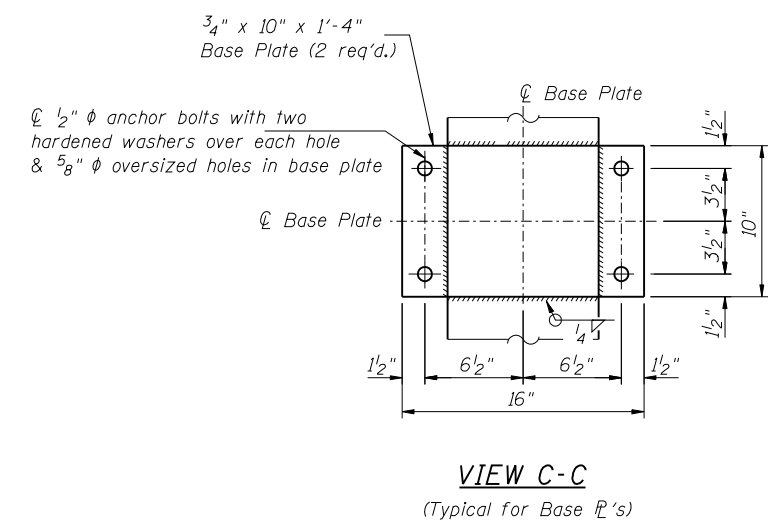


SECTION E-E

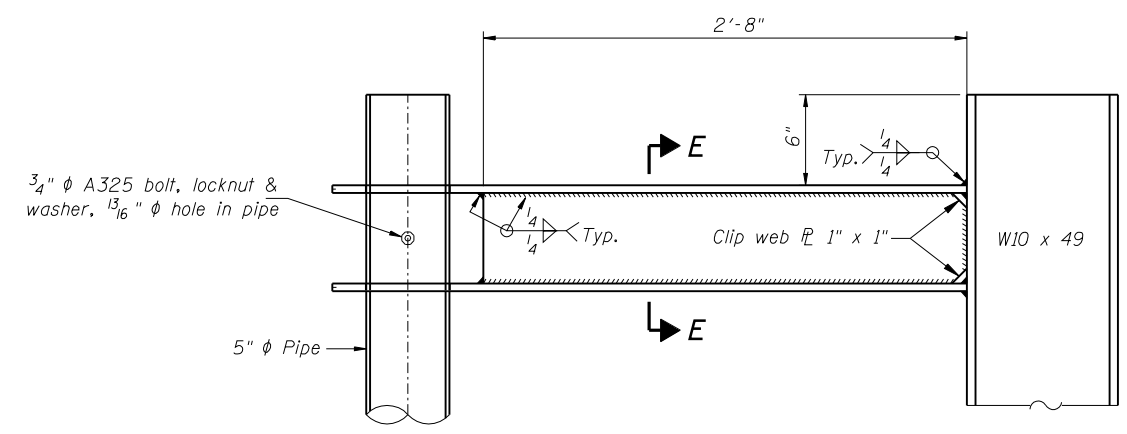
SECTION F-F



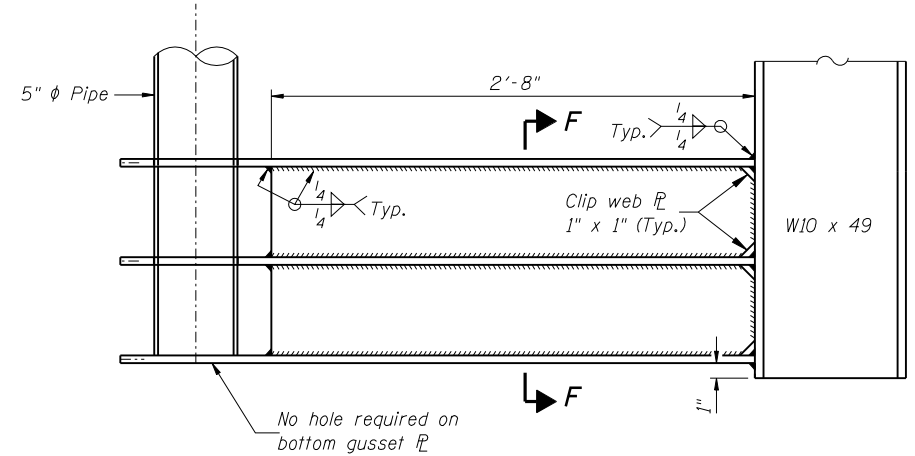
VIEW D-D



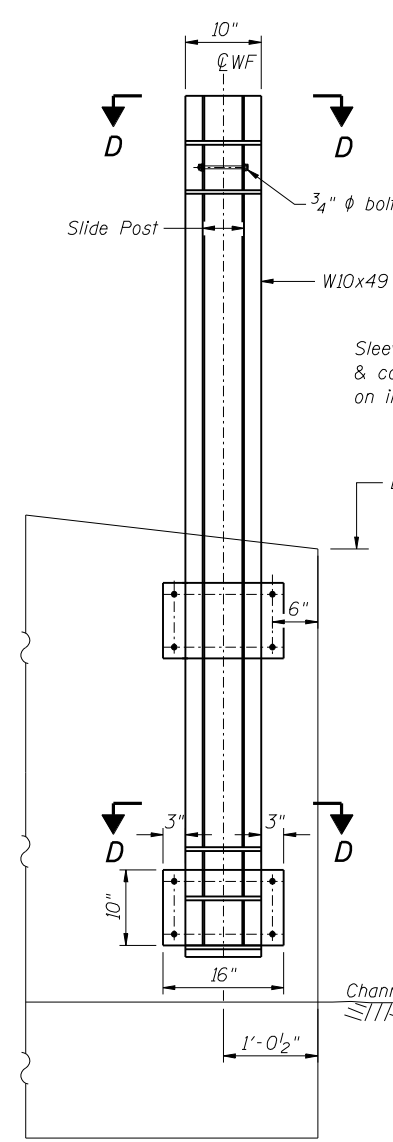
VIEW C-C  
(Typical for Base PL's)



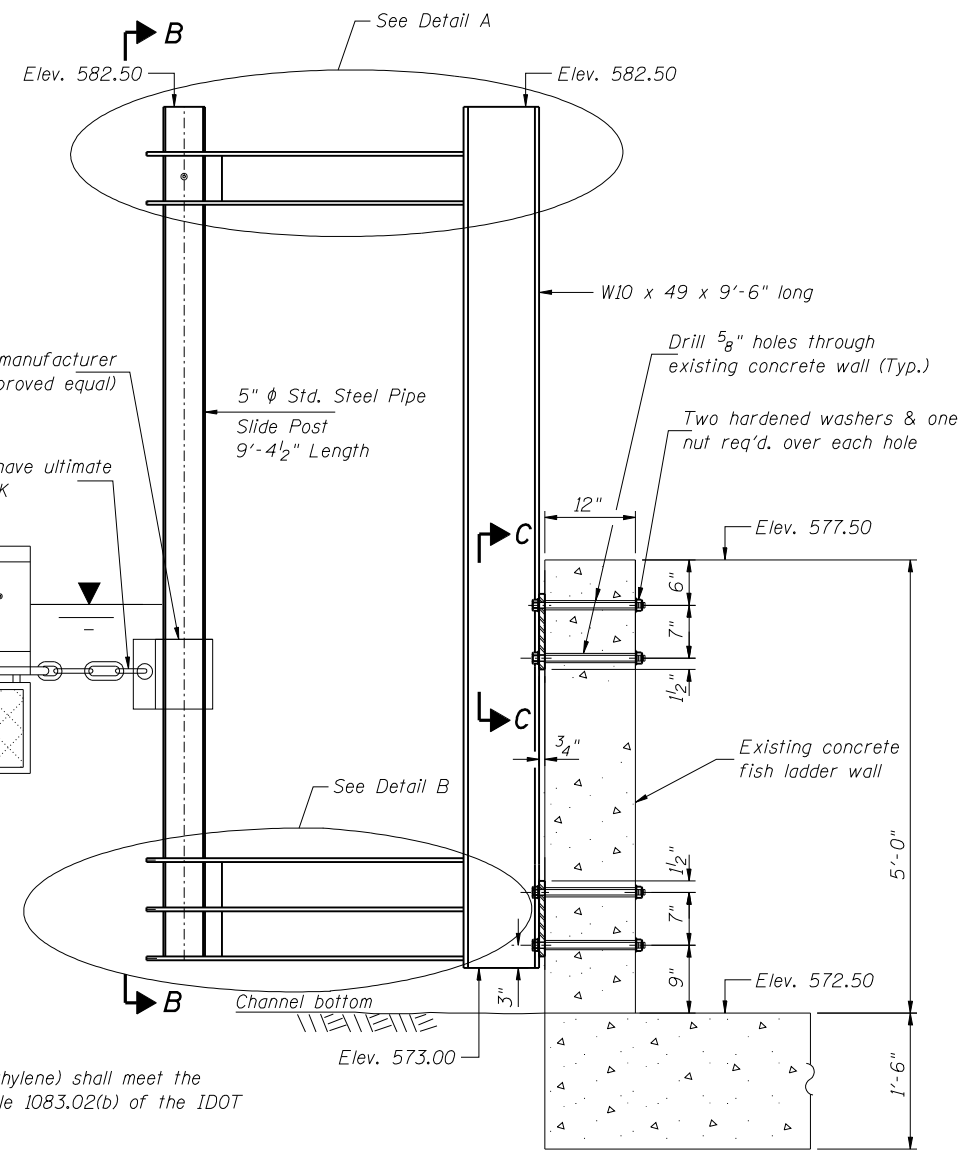
DETAIL A



DETAIL B



VIEW B-B



SECTION A-A

- NOTES:
- Two hardened washers shall be required over all oversized holes.
  - All steel plates, shapes and pipe shall be hot dip galvanized after shop fabrication according to AASHTO M111. Paint is not permitted.
  - Contractor shall field check all pertinent existing dimensions shown on plans before submitting shop drawings.
  - All bolts, washers, nuts & locknuts shall satisfy the requirements of ASTM A325. All fasteners shall be hot dip galvanized per AASHTO M232 unless otherwise specified.
  - Estimated weight of structural steel = 1,070 pounds (for information only).
  - All work on sheets 18 & 19 to be paid for as Debris Deflector, Lump Sum.

\* TFE (polytetrafluoroethylene) shall meet the requirements of Article 1083.02(b) of the IDOT Std. Specifications

1 Entire Sheet Revised 3/02/2011, TMM

Designed By TMM Checked By GMS  
Drawn By JUF Checked By TMM

\$FILES  
\$TIMES  
\$DATES