

INDEX OF SHEETS

- 1 TITLE SHEET/INDEX OF SHEETS
- 2 SUMMARY OF QUANTITIES AND GENERAL NOTES
- 3 IDNR STANDARD SHEET
- 4 GENERAL PLAN AND ELEVATION
- 5 PREFABRICATED BRIDGE DETAILS
- 6 SOUTH ABUTMENT
- 7 SOUTH ABUTMENT DETAILS
- 8 NORTH ABUTMENT DETAILS I
- 9 NORTH ABUTMENT DETAILS II
- 10 PEDESTRIAN RAILING - SOUTH ABUTMENT
- 11 PARK RAILING RELOCATION
- 12 GAGE STATION WALKWAY I
- 13 GAGE STATION WALKWAY II
- 14 GAGE STATION WALKWAY III
- 15 SOIL BORINGS
- 16 LIGHTING PLAN
- 17 LIGHTING DETAILS
- 18 DEBRIS DEFLECTOR FOR DENIL FISH LADDER PLAN
- 19 DEBRIS DEFLECTOR FOR DENIL FISH LADDER DETAILS

STANDARDS

- 280001 TEMPORARY EROSION CONTROL SYSTEMS
- 515001 NAME PLATE FOR BRIDGES

STATE OF ILLINOIS
 DEPARTMENT OF NATURAL RESOURCES
 OFFICE OF WATER RESOURCES

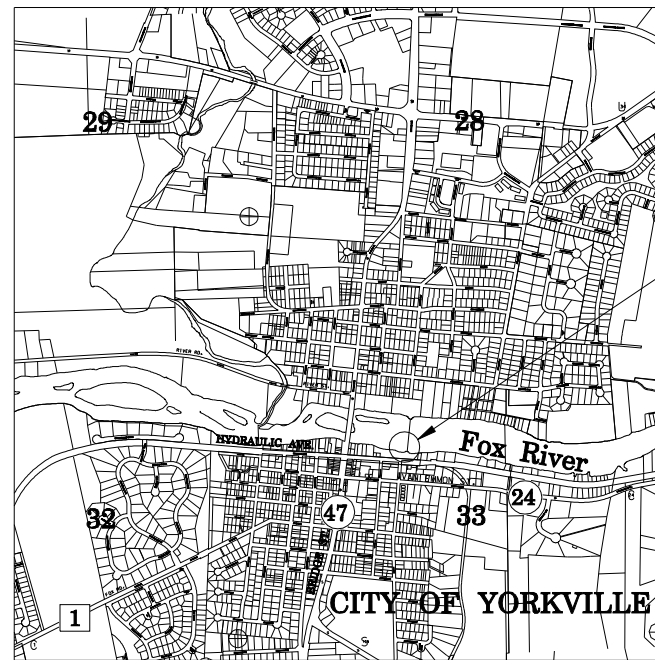
MULTI-PURPOSE DAM PROJECT - PHASE 3
 PEDESTRIAN BRIDGE OVER CANOE AND FISH BYPASS CHANNEL
 YORKVILLE DAM - FOX RIVER
 YORKVILLE, ILLINOIS
 KENDALL COUNTY

FR-430
 2011

R. 7 E.

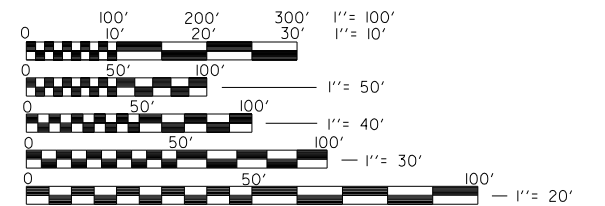
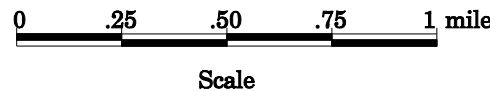


REGIONAL MAP



Project Location

LOCATION MAP



FULL SIZE PLANS HAVE BEEN PREPARED USING STANDARD ENGINEERING SCALES, REDUCED SIZED PLANS WILL NOT CONFORM TO STANDARD SCALES, IN MAKING MEASUREMENTS ON REDUCED PLANS, THE ABOVE SCALES MAY BE USED.

Ted Montrey 2/10/11
 ILLINOIS REGISTERED STRUCTURAL ENGINEER NO. 081-005450
 LICENSE EXPIRES 11-30-12



Ted Montrey 2/10/11
 ILLINOIS REGISTERED PROFESSIONAL ENGINEER NO. 062-049591
 LICENSE EXPIRES 11-30-11



APPROVED BY *Alan R. J. [Signature]* DATE 2-10-11
 ACTING DIRECTOR