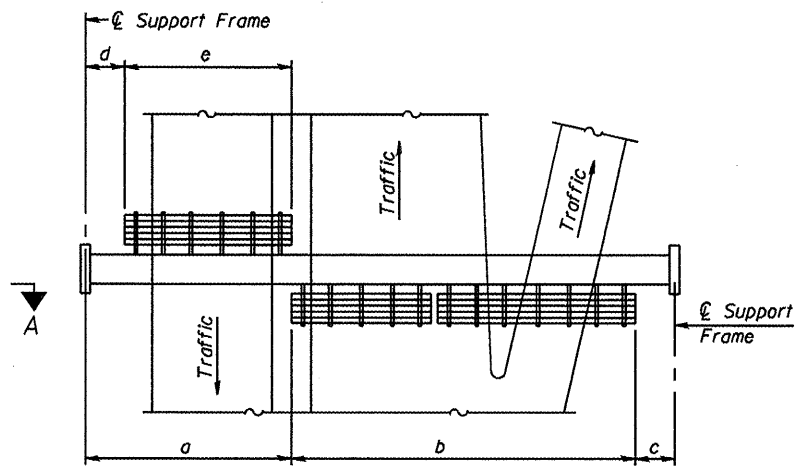


TYPICAL FRONT ELEVATION
With lights and handrail omitted for clarity.
For Section B-B, see Base Sheet OS-A-10.



PLAN
WALKWAY AND HANDRAIL SKETCH
(Road plan beneath truss varies)

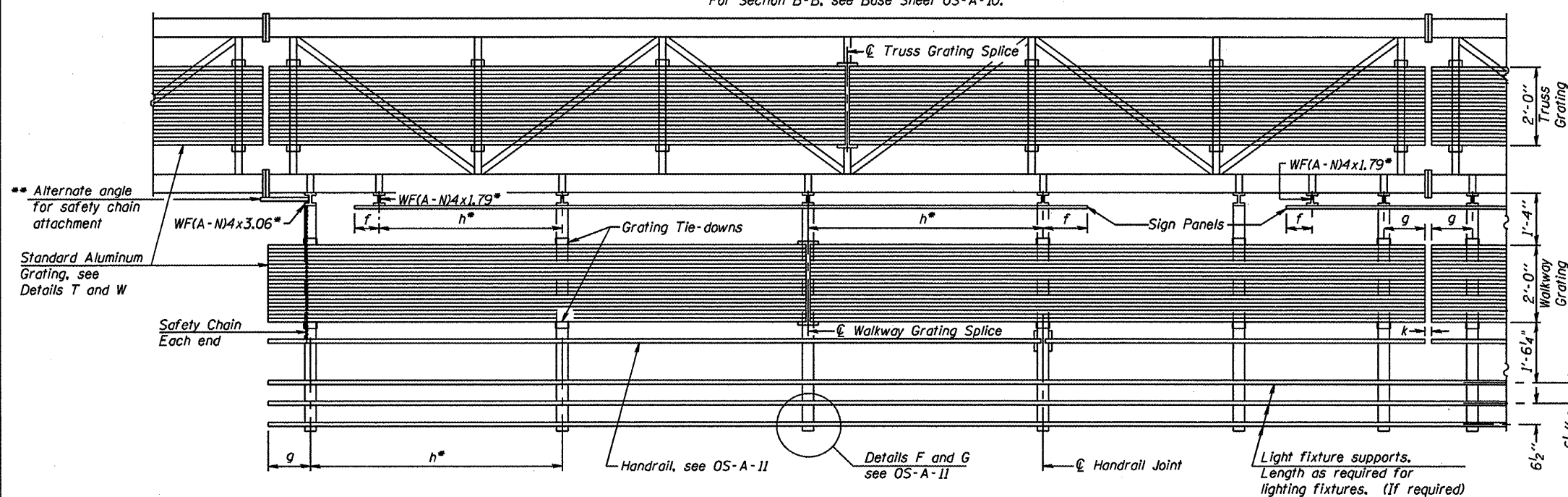
BRACKET TABLE

WF(A-N)4x1.79 or WF(A-N)4x3.06 ASTM B308, Alloy 6061-T6		
Sign Width		Number Brackets Required
Greater Than	Less Than or Equal To	
	8'-0"	2
8'-0"	14'-0"	3
14'-0"	20'-0"	4
20'-0"	26'-0"	5
26'-0"	32'-0"	6

- Notes:**
- Space walkway brackets WF(A-N)4x3.06 and sign brackets WF(A-N)4x1.79 for efficiency and within limits shown:
 - f = 12" maximum, 4" minimum (End of sign to center of nearest bracket)
 - g = 12" maximum, 4" minimum (End of walkway grating to center of nearest support bracket)
 - h = 6'-0" maximum (center to center sign and/or walkway support brackets, WF(A-N)4x1.79 or WF(A-N)4x3.06)
 - k = 2" maximum gap between adjacent walkway grating sections and handrail ends

** If walkway bracket at safety chain location is behind sign, add angle to bracket, see Alternate Safety Chain Attachment on Base Sheet OS-A-11.

For Details T and W, Section B-B and Grating Splice Details see Base Sheet OS-A-10.
For Handrail Details see Base Sheet OS-A-11.



SECTION A-A

Handrail and walkway shall span a minimum of three brackets between splices and/or gap joints. Place all sign and walkway brackets as close to panel points as practical. Handrail joints, grating, and light support splices placed as needed.

Structure Number	Station	a	b	c	d	e	Walkway Grating and Handrail Lengths
6S084I055L082.1	494 + 50	N/A	N/A	N/A	N/A	N/A	57' - 0"
6S084I055L094.7	184 + 00	N/A	N/A	N/A	N/A	N/A	54' - 0"
6S084S029L011.8	27 + 00	N/A	N/A	N/A	N/A	N/A	47' - 0"

Truss grating to facilitate inspection shall run full length (center to center of support frames) ±12" on overhead trusses. Cost of truss grating is included in "Overhead Sign Structure".

Walkway and Truss Grating width dimensions are nominal and may vary ±1/2" based on available standard widths.

OS-A-9

7-1-10

FILE NAME *	USER NAME *	DESIGNED -	REVISD -
		CHECKED -	REVISD -
PLOT SCALE *		DRAWN -	REVISD -
PLOT DATE *		CHECKED -	REVISD -

STATE OF ILLINOIS
DEPARTMENT OF TRANSPORTATION

OVERHEAD SIGN STRUCTURES
ALUMINUM WALKWAY DETAILS

F.A. -	SECTION	COUNTY	TOTAL SHEETS	SHEET NO.
RTE. -	Various D-6 OVD SIN STR REPL 11-11	Logan/Sangamon	29	11
CONTRACT NO. 46134			ILLINOIS FED. AID PROJECT	