

F.A.P. RTE.	SECTION	COUNTY	TOTAL SHEETS	SHEET NO.
324	24 B-2	McHENRY	76	1
FED. ROAD DIST. NO.	ILLINOIS	CONTRACT NO. 60F64		

D-91-178-09

STATE OF ILLINOIS
DEPARTMENT OF TRANSPORTATIONS

DIVISION OF HIGHWAYS

**PROPOSED
HIGHWAY PLANS**

F.A.P. ROUTE 324 /IL ROUTE 23

SECTION: 24 B-2

OVER COON CREEK

(0.5 MILES SOUTH OF I-90)

BRIDGE REPLACEMENT

PROJECT: *BRF-0324(020)*

McHENRY COUNTY

C-91-178-09



STATE OF ILLINOIS
DEPARTMENT OF TRANSPORTATION
DIVISION OF HIGHWAYS

SUBMITTED DECEMBER 20, 2010

Diane M. O'Keefe se
DEPUTY DIRECTOR OF HIGHWAYS, REGION ENGINEER

February 4 2011
Scott E. Stitt, P.E.
acting ENGINEER OF DESIGN AND ENVIRONMENT

February 4 2011
Christine M. Reed
DIRECTOR OF HIGHWAYS, CHIEF ENGINEER

**PRINTED BY THE AUTHORITY
OF THE STATE OF ILLINOIS**

CONCO, INC.
CONSULTING ENGINEERS
1560 WALL ST, SUITE 222
NAPERVILLE, ILLINOIS 60563 PH: (630) 577-9100

STATE OF ILLINOIS
REGISTERED PROFESSIONAL ENGINEER
081-005150-5

WILLIAM H. EGG
REGISTERED PROFESSIONAL ENGINEER
082-04782

William H. Egg
Expires 11-30-12

William H. Egg
Expires 11-30-11

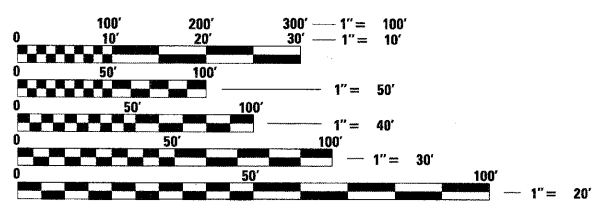
PROJECT LOCATED IN THE CITY OF
MARENGO IN McHENRY COUNTY, IL

FOR INDEX OF SHEETS, SEE SHEET NO. 2

DESIGN DESIGNATION
OTHER PRINCIPAL ARTERIAL

ADT 2400 (2007)
POSTED SPEED LIMIT 55 MPH
DESIGN SPEED LIMIT 60 MPH

EXISTING SN 056-0012
PROPOSED SN 056-0277

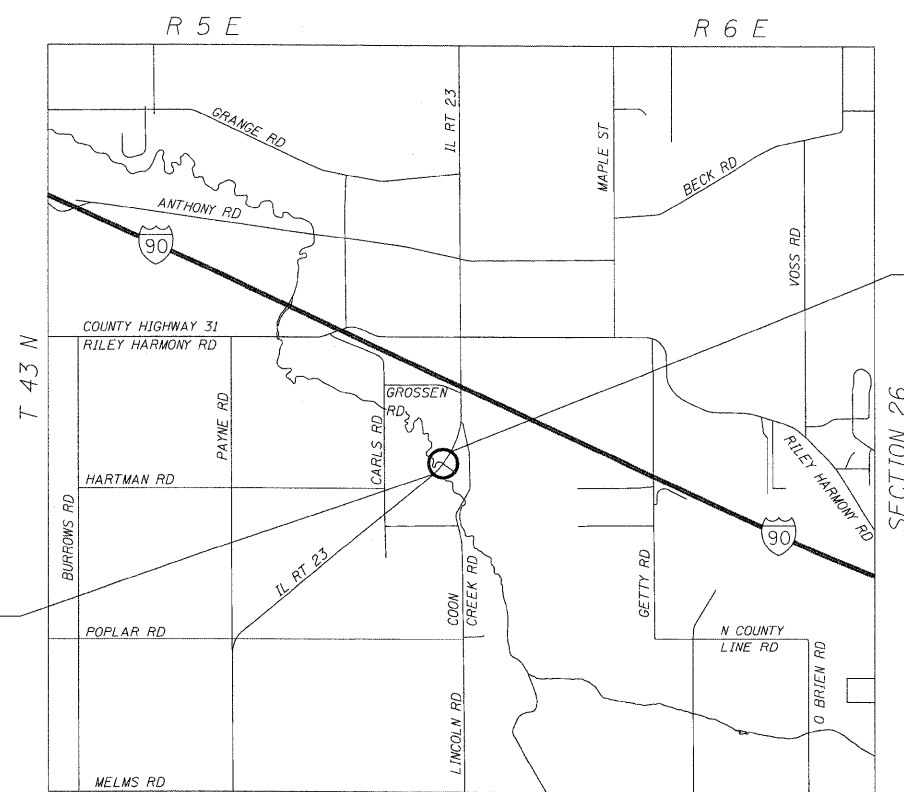


FULL SIZE PLANS HAVE BEEN PREPARED USING STANDARD ENGINEERING SCALES. REDUCED SIZED PLANS WILL NOT CONFORM TO STANDARD SCALES. IN MAKING MEASUREMENTS ON REDUCED PLANS, THE ABOVE SCALES MAY BE USED.

J.U.L.I.E.
JOINT UTILITY LOCATION INFORMATION FOR EXCAVATION
1-800-892-0123
OR 811

PROJECT MANAGER: ISAAC KWARTENG (847) 705-4230
PROJECT ENGINEER: ALIX BRICE (847) 705-4552

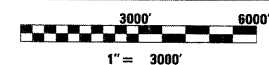
CONTRACT NO. 60F64



PROJECT BEGINS
STA. 88+00

PROJECT ENDS
STA. 103+55

RILEY TOWNSHIP
LOCATION MAP



NET AND GROSS LENGTH OF PROJECT = 1555.0' = 0.295 MI