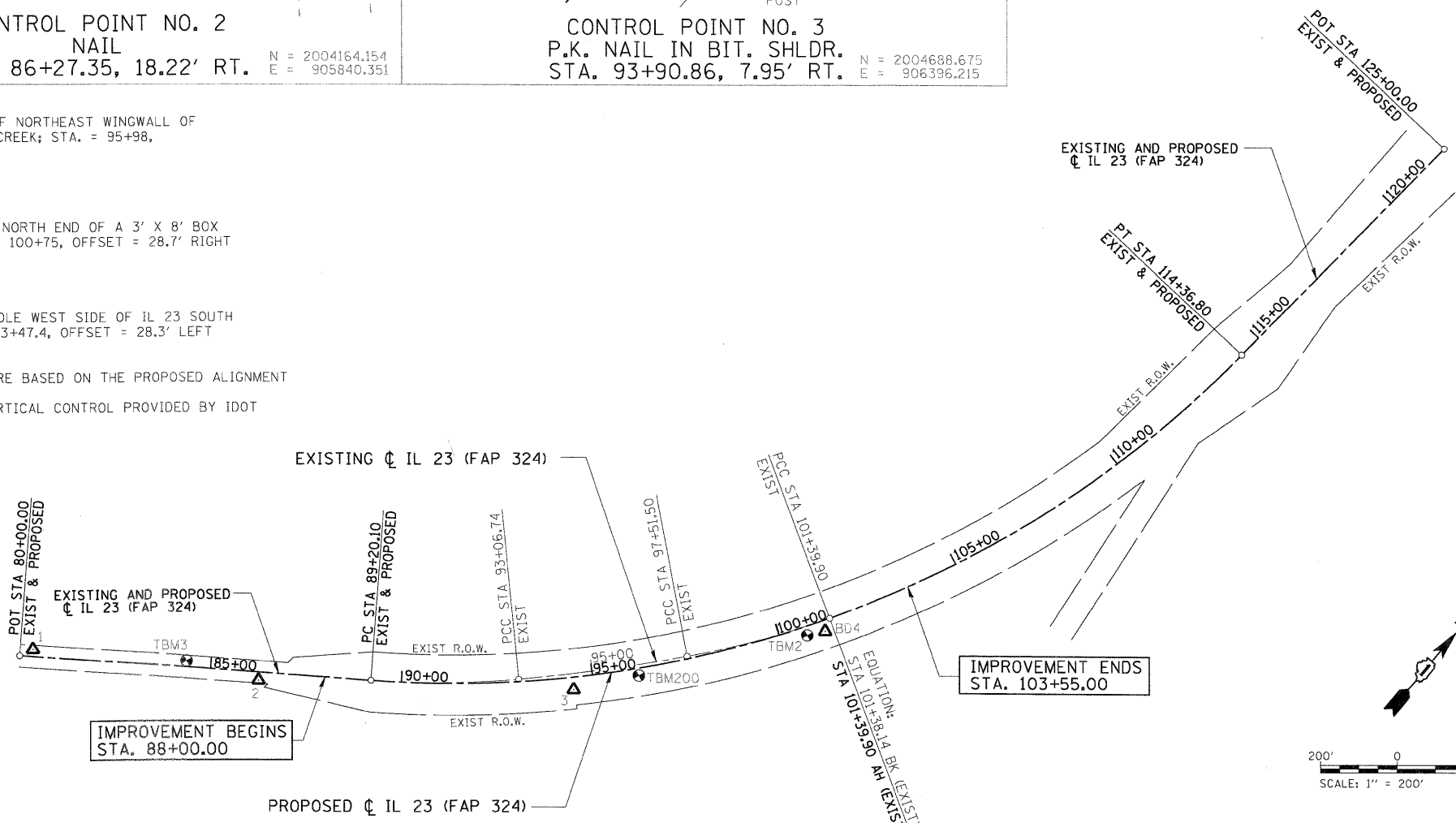


BENCHMARK TBM200  
FOUND "□" CUT IN TOP OF NORTHEAST WINGWALL OF  
IL 23 BRIDGE OVER COON CREEK; STA. = 95+98,  
OFFSET = 13.5' RIGHT  
ELEV. = 814.83

BENCHMARK TBM2  
CHISELLED "X" IN TOP OF NORTH END OF A 3' X 8' BOX  
CULVERT HEADWALL; STA. = 100+75, OFFSET = 28.7' RIGHT  
ELEV. = 812.22

BENCHMARK TBM3  
RR SPIKE IN 3RD POWER POLE WEST SIDE OF IL 23 SOUTH  
OF COON CREEK; STA. = 83+47.4, OFFSET = 28.3' LEFT  
ELEV. = 821.18

NOTE: STATION/OFFSETS ARE BASED ON THE PROPOSED ALIGNMENT  
NOTE: HORIZONTAL AND VERTICAL CONTROL PROVIDED BY IDOT



**PROPOSED CURVE DATA**

PI STA. = 102+66.15
Δ = 50° 20' 02" (LT)
D = 2° 00' 00"
R = 2,864.79'
T = 1,346.05'
L = 2,516.70'
E = 300.47'
P.C. STA. = 89+20.10
P.T. STA. = 114+36.80

**EXISTING CURVE DATA**

PI STA. = 91+13.88	PI STA. = 95+29.27	PI STA. = 99+45.28	PI STA. = 107+99.66
Δ = 9° 39' 57" (LT)	Δ = 5° 03' 51" (LT)	Δ = 9° 39' 57" (LT)	Δ = 25° 56' 17" (LT)
D = 2° 30' 00"	D = 1° 08' 19"	D = 2° 30' 00"	D = 2° 00' 00"
R = 2,291.83'	R = 5,032.06'	R = 2,291.83'	R = 2,864.79'
T = 193.78'	T = 222.53'	T = 193.78'	T = 659.76'
L = 386.64'	L = 444.77'	L = 386.64'	L = 1,296.90'
E = 8.18'	E = 4.92'	E = 8.18'	E = 74.99'
P.C. STA. = 89+20.10	P.C. STA. = 93+06.74	P.C. STA. = 97+51.50	P.C. STA. = 101+39.90
P.T. STA. = 93+06.74	P.T. STA. = 97+51.50	P.T. STA. = 101+38.14	P.T. STA. = 114+36.80

FILE NAME	USER NAME = #USER#	DESIGNED -	REVISED - 08/2010
#FILE#		DRAWN - DJH	REVISED -
		CHECKED - GLW	REVISED -
		DATE - 12/30/2010	REVISED -

**STATE OF ILLINOIS  
DEPARTMENT OF TRANSPORTATION**

**ALIGNMENT, TIES & BENCHMARKS  
IL ROUTE 23 OVER COON CREEK**

SCALE: 1" = 200' SHEET NO. 1 OF 2 SHEETS STA. 80+00.00 TO STA. 122+00.00

F.A.P. RTE. 324	SECTION 24 B-2	COUNTY MCHENRY	TOTAL SHEETS 76	SHEET NO. 7
D-91-178-09		CONTRACT NO. 60F64		
FED. ROAD DIST. NO. [ILLINOIS] FED. AID PROJECT				