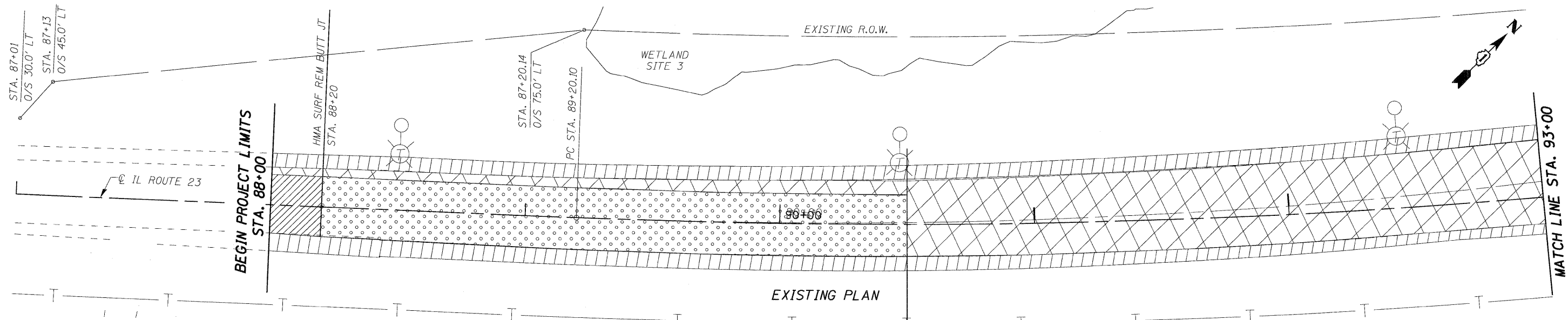


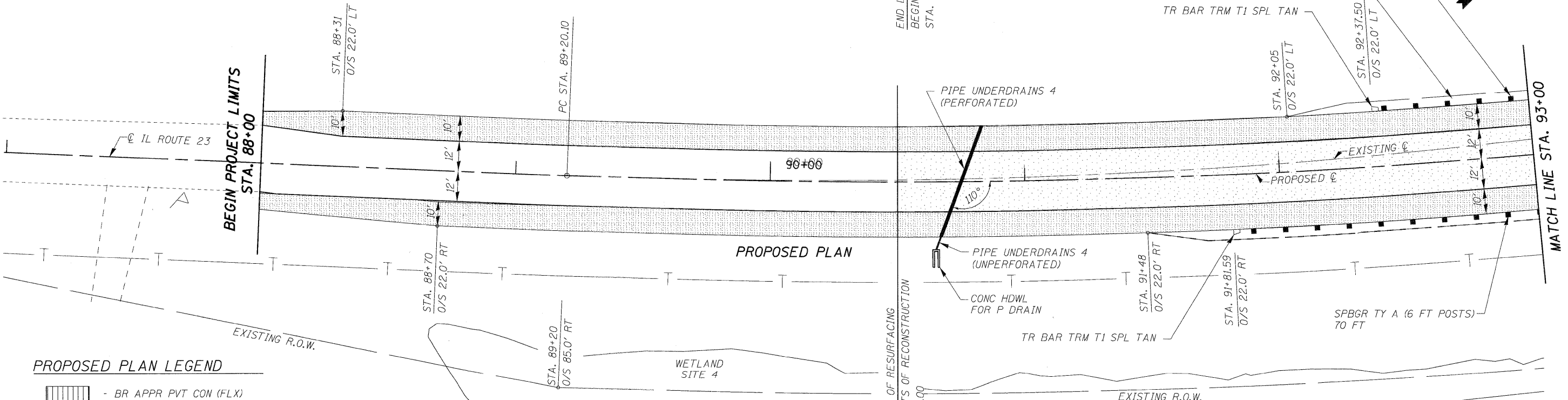
PLAN	SUBMITTED	DATE
	PLOTTED	BY
	ALIGNMENT CHECKED	
	PAID FILE NAME	
	NO.	

PROFILE	SUBMITTED	DATE
	PLOTTED	BY
	GRADES CHECKED	
	STRUCTURE NOTATIONS CHKD	
	NO.	



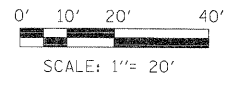
**EXISTING PLAN LEGEND**

- HMA SURF REM BUTT JT
- PAVED SHLD REMOVAL
- HMA SURF REM VAR DP
- PAVEMENT REM
- APPROACH SLAB REM 2 @ 30'-0" BY 46'-0"



**PROPOSED PLAN LEGEND**

- BR APPR PVT CON (FLX)
- BRIDGE APPROACH SLAB, PAID AS CONCRETE SUPERSTRUCTURE, 2 @ 30'-0" BY 48'-4"
- BIT MATLS PR CT, HMA SC "D" N70, 1 1/2", HMA BC IL-19.0 N70, 2 1/4", & LEV BIND MM N70, 3/4"
- HMA SC "D" N70, 2", HMA BC IL-19.0 N70, 2 1/4", HMA BASE CSE 10, & AGG SUBGRADE 12 SHALL BE PAID FOR AS HMA PAVT FD 1 1/4"
- BIT MATLS PR CT, & HMA SHOULDERS 6



**LOCO, INC.**  
CONSULTING ENGINEERS  
1560 WALL ST, SUITE 222  
NAPERVILLE, ILLINOIS 60563 PH: 630/517-9100

DESIGNED	- MJY, ST	REVISED	-
DRAWN	- ST	REVISED	-
CHECKED	- MJY	REVISED	-
DATE	- 12/30/2010	REVISED	-

**STATE OF ILLINOIS  
DEPARTMENT OF TRANSPORTATION**

<b>EXISTING AND PROPOSED PLAN IL ROUTE 23 OVER COON CREEK</b>	
SCALE: 1" = 20'	SHEET NO. 1 OF 3
STA. 88+00 TO STA. 93+00	

F.A.P. RTE. 324	SECTION 24 B-2	COUNTY McHENRY	TOTAL SHEETS 76	SHEET NO. 14
D-91-178-09		CONTRACT NO. 60F64		
FED. ROAD DIST. NO. ILLINOIS FED. AID PROJECT				