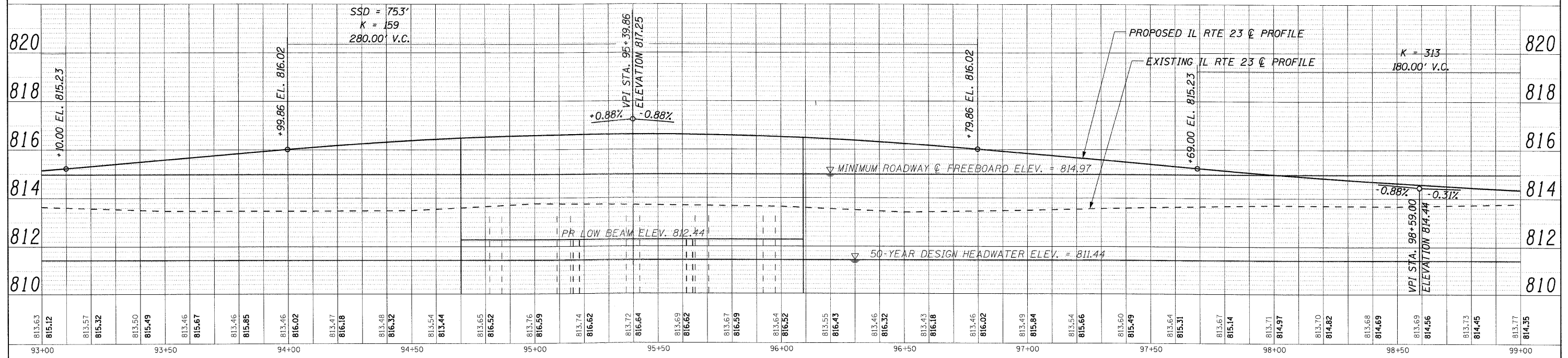
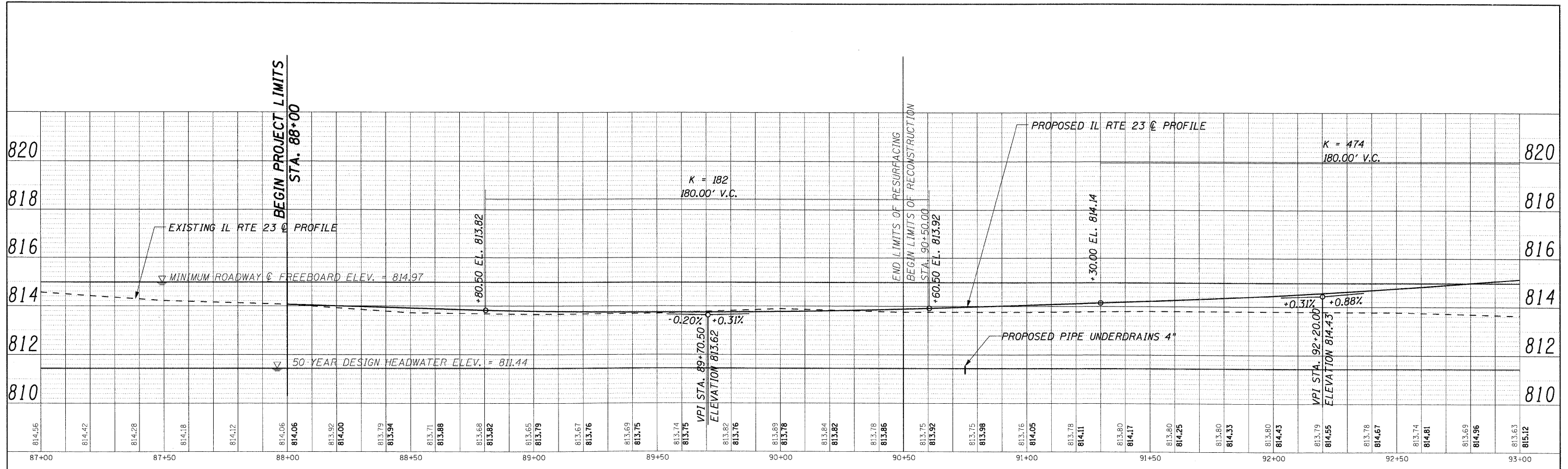


PROFILE	SURVEYED	DATE
	PLOTTED	
	GRADES CHECKED	
	NOTE BOOK	
	STRUCTURE	
	NOTATIONS	
	CHKD	
	NO.	

PLAN	SURVEYED	DATE
	PLOTTED	
	ALIGNMENT CHECKED	
	NOTE BOOK	
	CADD FILE NAME	
	NO.	



LONCO, INC.
CONSULTING ENGINEERS
1560 WALL ST, SUITE 222
NAPERVILLE, ILLINOIS 60563 PH: (630) 577-9100

DESIGNED - MJY, ST
DRAWN - ST
CHECKED - MJY
DATE - 12/30/2010

REVISED -
REVISED -
REVISED -
REVISED -

STATE OF ILLINOIS
DEPARTMENT OF TRANSPORTATION

EXISTING AND PROPOSED PROFILE
IL ROUTE 23 OVER COON CREEK
SCALE: 1" = 20'
SHEET NO. 1 OF 2
STA. 88+00 TO STA. 99+00

F.A.P. RTE. 324	SECTION 24 B-2	COUNTY McHENRY	TOTAL SHEETS 76	SHEET NO. 17
D-91-178-09		CONTRACT NO. 60F64		
FED. ROAD DIST. NO. ILLINOIS FED. AID PROJECT				