

F.A.P. RTE.	SECTION	COUNTY	TOTAL SHEETS	SHEET NO.
•	2010-133-1	WILL	55	1
FED. ROAD DIST. NO.	ILLINOIS	CONTRACT NO.	60F75	
• 846/357				

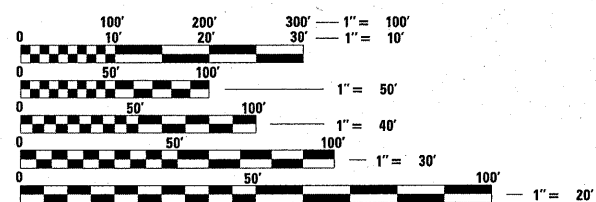
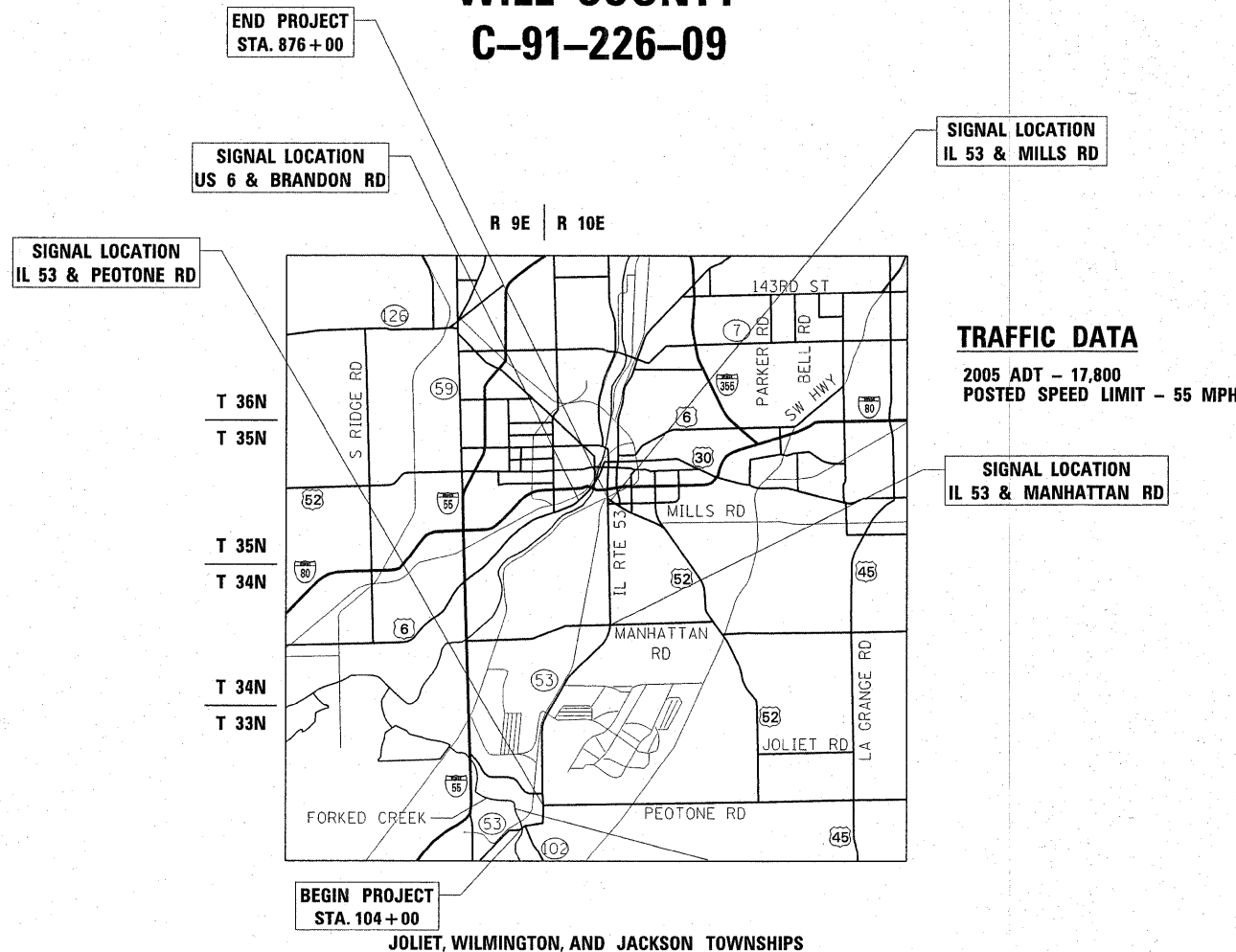
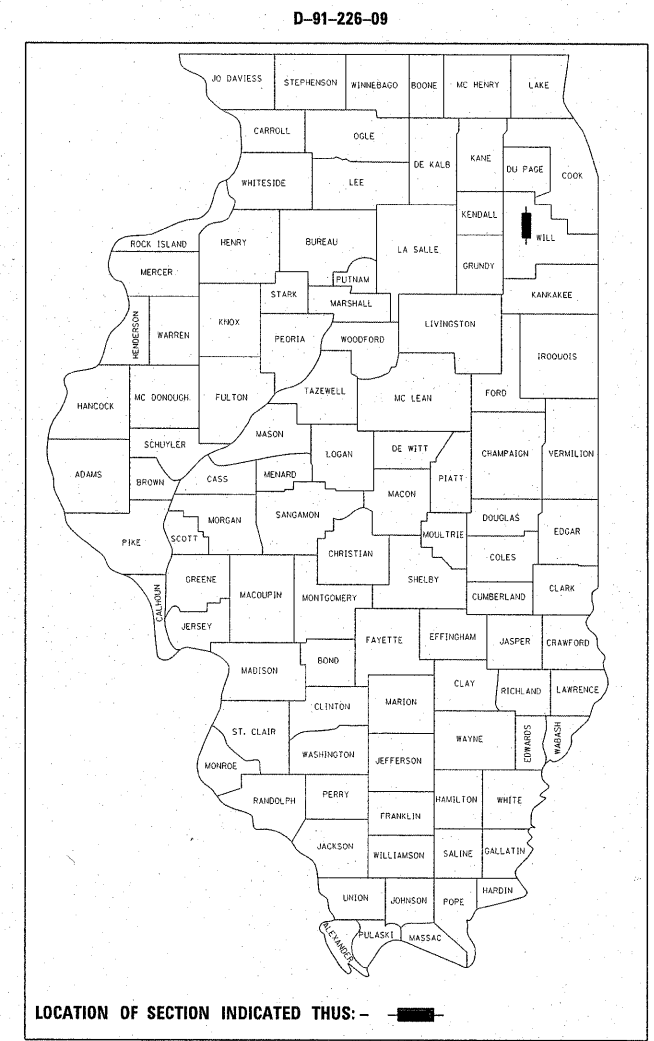
STATE OF ILLINOIS  
DEPARTMENT OF TRANSPORTATION  
DIVISION OF HIGHWAYS

# PROPOSED HIGHWAY PLANS

F.A.P. 846 / 357 (IL 53)  
SECTION 2010-133-1  
FORKED CREEK TO US 52  
GUARDRAIL, SHOULDER RUMBLE STRIPS &  
TRAFFIC SIGNAL MODERNIZATION  
PROJECT: *HSIP-0005(679)*  
WILL COUNTY  
C-91-226-09

FOR INDEX OF SHEETS, SEE SHEET NO. 2

THE IMPROVEMENT IS LOCATED  
WITHIN THE CITIES OF JOLIET AND WILMINGTON,  
AND THE VILLAGES OF ELWOOD,  
ROCKDALE, AND PRESTON HEIGHTS



FULL SIZE PLANS HAVE BEEN PREPARED USING STANDARD  
ENGINEERING SCALES. REDUCED SIZED PLANS WILL NOT  
CONFORM TO STANDARD SCALES. IN MAKING MEASUREMENTS  
ON REDUCED PLANS, THE ABOVE SCALES MAY BE USED.

J.U.L.I.E.  
JOINT UTILITY LOCATION INFORMATION FOR EXCAVATION  
1-800-892-0123  
OR 811

PROJECT ENGINEER: JENPAI CHANG (847) 705-4432  
PROJECT MANAGER: KEN ENG

CONTRACT NO. 60F75

GROSS AND NET LENGTH OF PROJECT = 77,200 FT = 14.62 MI.

STATE OF ILLINOIS  
DEPARTMENT OF TRANSPORTATION  
DIVISION OF HIGHWAYS

SUBMITTED OCTOBER 26, 20 10  
Diane M. O'Keefe  
DEPUTY DIRECTOR OF HIGHWAYS, REGION ENGINEER

December 10 20 10  
Scott E. Stitt P.E.  
acting ENGINEER OF DESIGN AND ENVIRONMENT

December 10 20 10  
Christine M. Reed  
DIRECTOR OF HIGHWAYS, CHIEF ENGINEER

PRINTED BY THE AUTHORITY  
OF THE STATE OF ILLINOIS