

Existing Structure: S.N. 016-0014(E.B) built in 1964 as F.A.I Route 55, Section 0707-616B. In 1999, the bridge was widened and deck was removed and replaced. Structure consists of a five spans of steel beam end spans and continuous steel plate girder interior spans with 699'-0 7/8" back-to-back abutments, varies 75'-1 1/2" to 75'-3 3/8" out-to-out deck width. The substructure consists of a pile bent abutment (W. Abut.), drilled shaft supported abutment (E. Abut.), multi column piers on piles (Piers 1 & 4), and multi column piers on drilled shafts (Piers 2 & 3).

GENERAL NOTES

Plan dimensions and details relative to existing plans are subject to nominal construction variations. The Contractor shall field verify existing dimensions and details affecting new construction and make necessary approved adjustments prior to construction or ordering of materials. Such variations shall not be cause for additional compensation for a change in scope of the work, however, the Contractor will be paid for the quantity actually furnished at the unit price bid for the work.

Existing pavement markings shall be temporarily covered prior to application of the Concrete Sealer, to prevent the material from being applied to the markings. The temporary covering shall be removed after application of the Concrete Sealer and prior to opening to traffic. Cost is included with "Concrete Sealer".

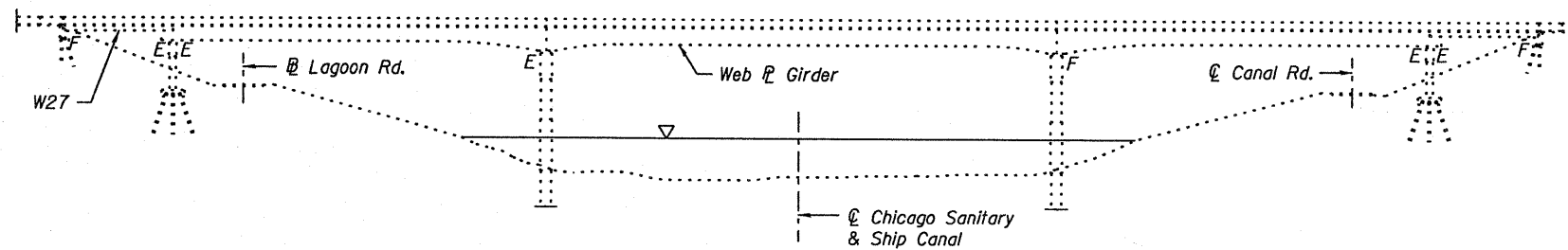
See special provisions for lane closure requirements. Roadway shall only be opened to traffic after sealant has completely cured.

SCOPE OF WORK

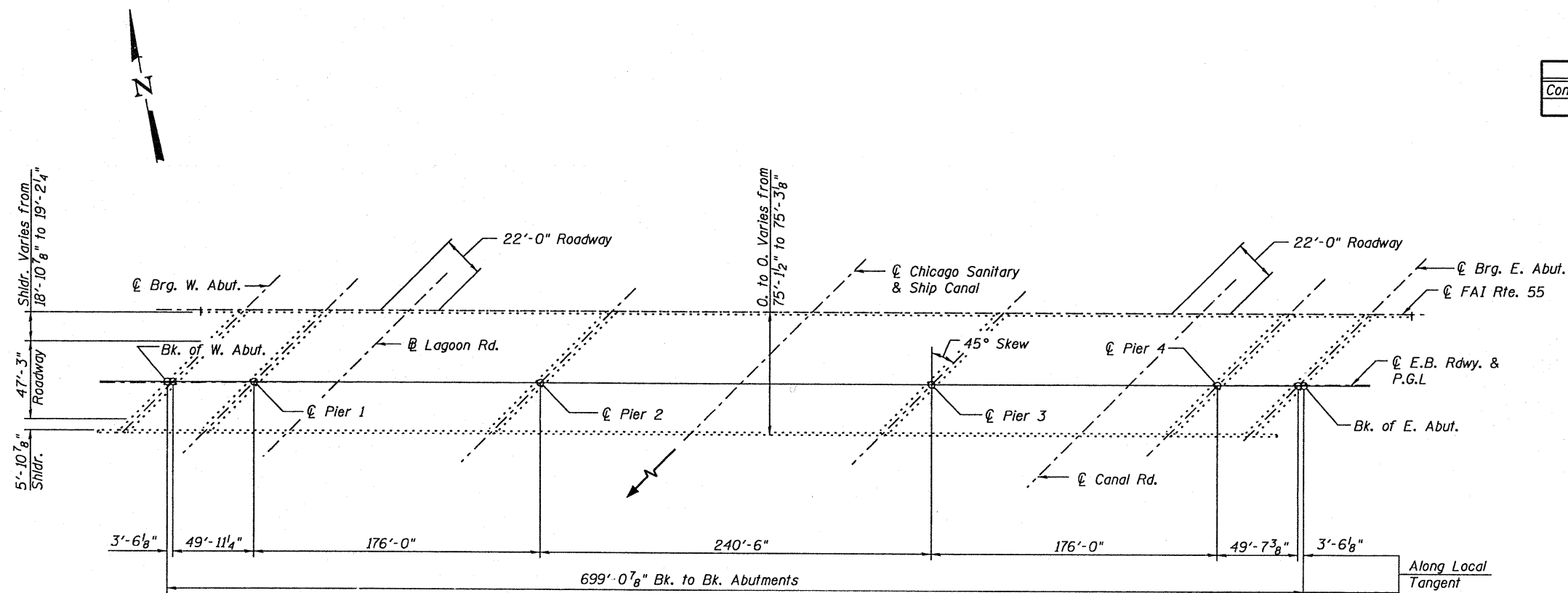
Apply Concrete Sealer to top of deck surface and top and inside vertical face of parapets.

TOTAL BILL OF MATERIAL

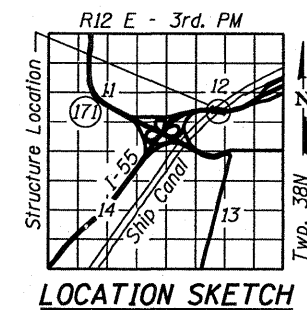
Item	Unit	Total
Concrete Sealer	Sq. Ft.	56357



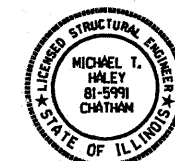
ELEVATION



PLAN

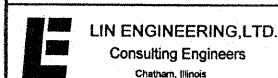


LOCATION SKETCH



Michael T. Haley 12-6-10
 Michael T. Haley Date
 Licensed Structural Engineer
 State of Illinois No. 81-5991
 Expires 11/30/2012

GENERAL PLAN AND ELEVATION
E.B I-55 OVER CHICAGO SANITARY & SHIP CANAL
FAI RTE 55
SECTION (0102-631,ETC,0507-635K)RS-3
COOK COUNTY
STRUCTURE NO. 016-0014



USER NAME =	DESIGNED - ESH	REVISIONS -
PLOT SCALE =	CHECKED - KHH	REVISIONS -
PLOT DATE =	DRAWN - TBP	REVISIONS -
	CHECKED - KHH	REVISIONS -

STATE OF ILLINOIS
DEPARTMENT OF TRANSPORTATION

GENERAL PLAN & ELEVATION
STRUCTURE NO. 016-0014

SHEET NO. 1 OF 1 SHEET

F.A.I. RTE.	SECTION	COUNTY	TOTAL SHEETS	SHEET NO.
55	0102-631,ETC,0507-635KRS-3	COOK	107	61
			CONTRACT NO.	60164
ILLINOIS FED. AID PROJECT				