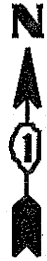
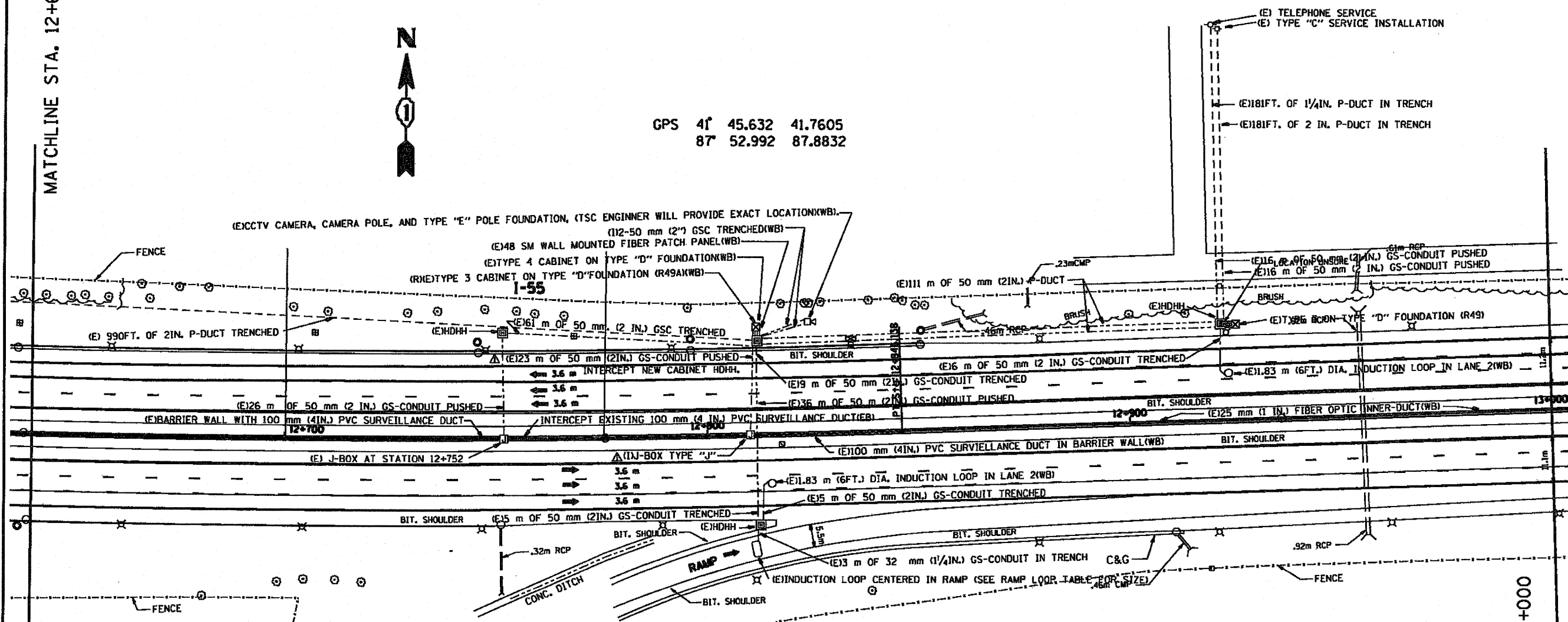


F.A. DIST. NO.	SECTION	COUNTY	TOTAL SHEETS	SHEET NO.
			17	17
STA. _____ TO STA. _____		ILLINOIS FED. AID PROJECT		

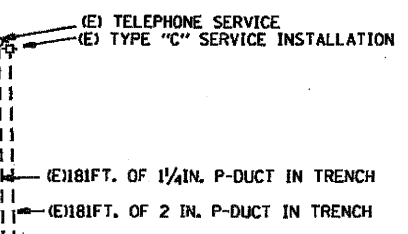
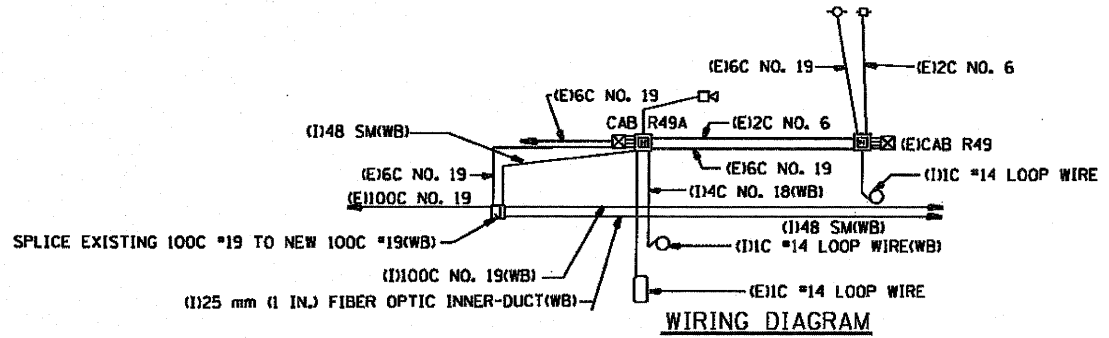
MATCHLINE STA. 12+640



GPS 41° 45.632 41.7605
87° 52.992 87.8832



SYMBOL	LEGEND
[Square with circle]	INDUCTION LOOP
[Circle with circle]	ROUND INDUCTION LOOP
[Square]	TSC CABINET
[Circle]	TELEPHONE SERVICE
[Square with circle]	SERVICE INSTALLATION
[Square]	JUNCTION BOX
[Square]	HEAVY DUTY HAND HOLE
[Dashed line]	POLYETHYLENE DUCT
[Dashed line]	GALVANIZED STEEL CONDUIT
(E)	EXISTING
(P)	PROPOSED
(I)	INSTALL
(R)	REMOVE
(WB)	WESTBOUND CONTRACT
(EB)	EASTBOUND CONTRACT



MATCHLINE STA. 13+000

FOR INFORMATION ONLY

EASTBOUND (EB) QUANTITIES ARE "FOR INFORMATION ONLY".

REVISIONS	
NAME	DATE
J.G.	5-99
R.L.	4-00

ILLINOIS DEPARTMENT OF TRANSPORTATION
TRAFFIC SYSTEMS CENTER
1-55 STEVENSON
E. OF WILLOW SPRINGS
SCALE: 1:500
DATE 7-97
DRAWN BY G.M.
CHECKED BY J.G.

RD-C PROJECTS TSC 550PR-RE, METSHEE1.DGN
RP-C550PR-RE, P27590A.DGN