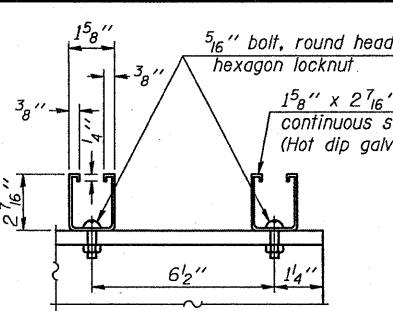
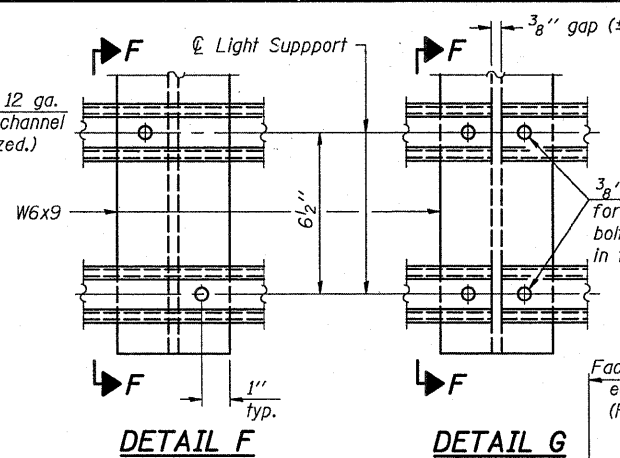


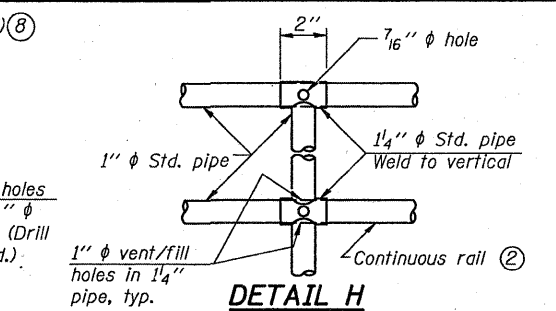
SIDE ELEVATION DETAIL D HANDRAIL FRONT ELEVATION



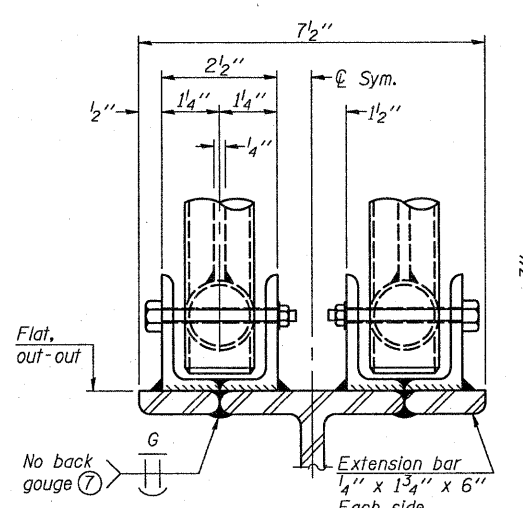
SECTION F-F LIGHTING FIXTURE MOUNTS (If required)



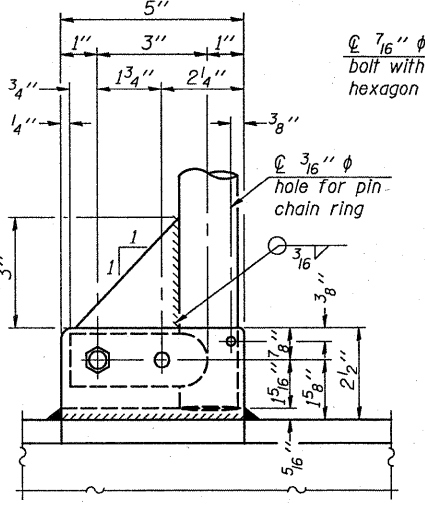
DETAIL F DETAIL G



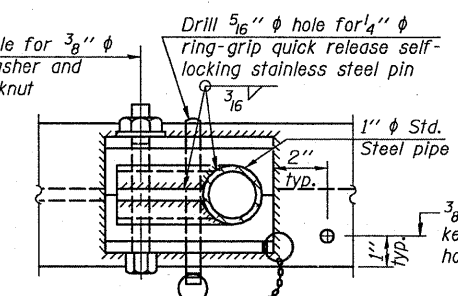
DETAIL H



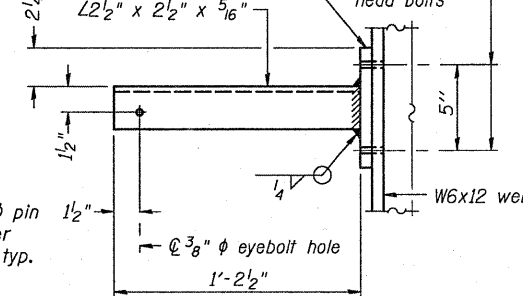
ELEVATION AT HANDRAIL JOINT



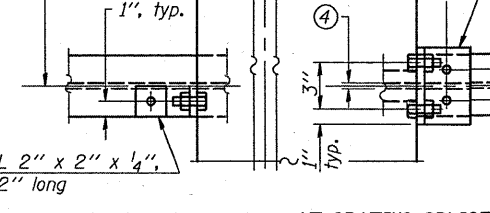
SIDE ELEVATION



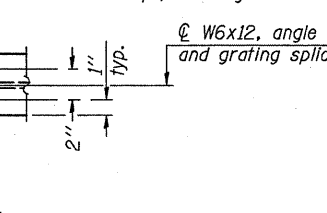
PLAN AT SINGLE HANDRAIL HINGE



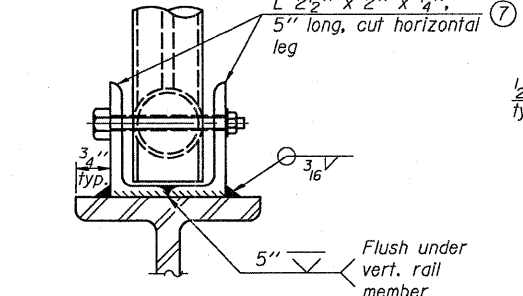
SECTION P-P



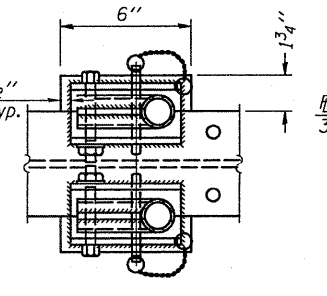
VIEW W-W



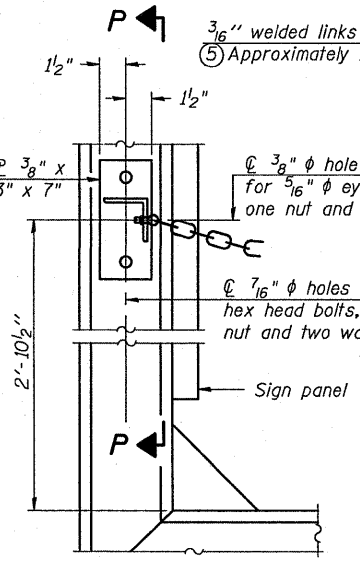
PLAN



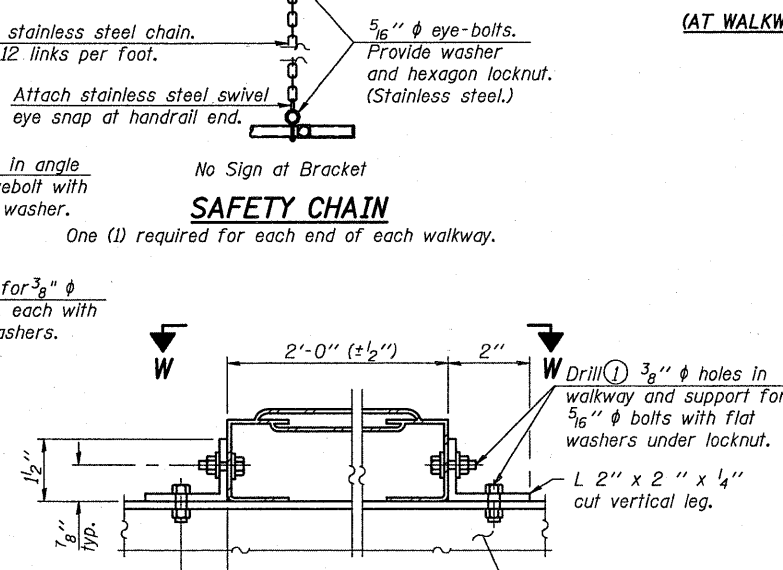
FRONT ELEVATION



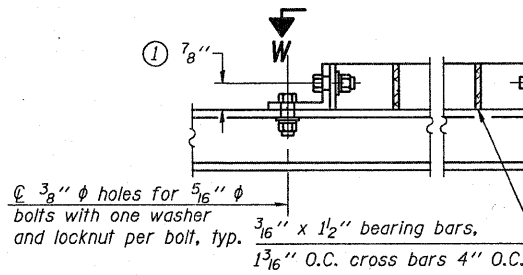
PLAN AT HANDRAIL JOINT



SAFETY CHAIN ATTACHMENT



ALTERNATE FORMED PLANK GRATING DETAILS



WELDED BAR GRATING DETAILS

BM-4

7-1-10

LIN ENGINEERING, LTD.
Consulting Engineers
Channah, Illinois

USER NAME =	DESIGNED - ADB	REVISED -
FILE NAME =	CHECKED - ADB	REVISED -
PLOT SCALE =	DRAWN - ADB	REVISED -
PLOT DATE =	CHECKED - MTH	REVISED -

STATE OF ILLINOIS
DEPARTMENT OF TRANSPORTATION

BRIDGE MOUNT SIGN STRUCTURES
WALKWAY DETAILS
SHEET NO. 4 OF 4 SHEETS

F.A.I. RTE.	SECTION	COUNTY	TOTAL SHEETS	SHEET NO.
55	10101-631, ETC, 0507-635KRS-3	COOK	10	1181
ILLINOIS FED. AID PROJECT			CONTRACT NO. 60164	

- NOTES**
- Drilling holes in grating may be done in shop or field, based on Contractor's preference and subject to accurate alignment. Field drilled holes must be touched up with galvanized paint.
 - Horizontal rail member shall be continuous thru 1 1/4" pipe. Provide 7/16" hole in 1 1/4" pipe for 3/8" bolt. Field drill 7/16" hole in horizontal rail member. Provide washer and locknut for bolt. (Use 5/16" eyebolts in 7/16" holes on top rail at ends only.)
 - Install standard force-fit end caps or weld 1/8" end plates with 1/8" c.f.w. and grind smooth. (All rail ends.)
 - 3/8" (±1/4") gap between grating panels at splice.
 - Chain to be type 304L stainless steel suitable for prolonged exterior exposure. Approximately 3'-6" long chain per location. Maximum sag with handrail erected = 4".
 - 1 1/8" x 1/2" x 2" welded to handrail posts to protect locations that contact grating.
 - Extrusions may be used in lieu of details shown, with approval by Engineer.
 - Field cut ends of light support channels shall be free of burrs or hazardous projections and coated with zinc-rich primer or equivalent.