

STATE OF ILLINOIS  
DEPARTMENT OF TRANSPORTATION  
DIVISION OF HIGHWAYS

**PROPOSED  
HIGHWAY PLANS**

**FAU 1238 /IL ROUTE 176 (ROCKLAND ROAD) OVER EAST SKOKIE DITCH  
BRIDGE REPLACEMENT  
SECTION C-B-I**

**LAKE COUNTY  
C-91-257-10**

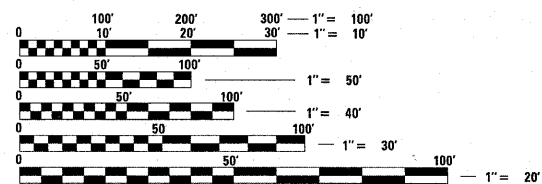
FOR INDEX OF SHEETS, SEE SHEET NO. 2

**TRAFFIC DATA:**  
EXISTING ADT = 14,200 (2009)  
POSTED SPEED = 40 MPH

PROJECT LOCATION  
ILLINOIS ROUTE 176  
OVER EAST SKOKIE DITCH  
STRUCTURE NO. 049-0238

IMPROVEMENT BEGINS  
STA. 1154 + 04.8

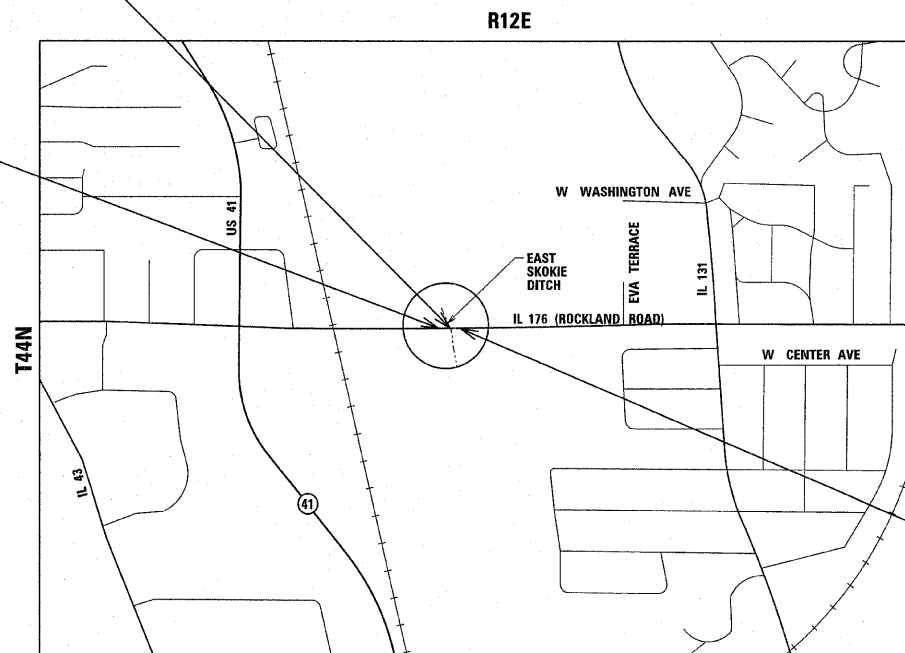
PROJECT IS LOCATED IN THE  
VILLAGE OF LAKE BLUFF



FULL SIZE PLANS HAVE BEEN PREPARED USING STANDARD  
ENGINEERING SCALES. REDUCED SIZED PLANS WILL NOT  
CONFORM TO STANDARD SCALES. IN MAKING MEASUREMENTS  
ON REDUCED PLANS, THE ABOVE SCALES MAY BE USED.

J.U.L.I.E.  
JOINT UTILITY LOCATION INFORMATION FOR EXCAVATION  
1-800-892-0123 OR 811

**PROJECT MANAGER RAJENDRA SHAH (847) 705-4555**  
**PROJECT ENGINEER MICHELLE AQUINO (847) 705-4606**  
**CONTRACT NO. 60J67**



IMPROVEMENT ENDS  
STA. 1163 + 00

SECTION 20  
SHIELDS TOWNSHIP  
LOCATION MAP  
NOT TO SCALE

**GROSS LENGTH OF PROJECT = 895.2 FEET = 0.17 MILES**  
**NET LENGTH OF PROJECT = 895.2 FEET = 0.17 MILES**

|                     |          |                    |              |           |
|---------------------|----------|--------------------|--------------|-----------|
| F.A.U. RTE.         | SECTION  | COUNTY             | TOTAL SHEETS | SHEET NO. |
| 1238                | C-B-I    | LAKE               | 64           | 1         |
| FED ROAD DIST No. 1 | ILLINOIS | CONTRACT No. 60J67 |              |           |

D-91-641-09



LOCATION OF SECTION INDICATED THIS: -

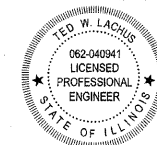
STATE OF ILLINOIS  
DEPARTMENT OF TRANSPORTATION  
DIVISION OF HIGHWAYS

SUBMITTED December 22, 2010  
Diane M. O'Keefe  
DEPUTY DIRECTOR OF HIGHWAYS, REGION ENGINEER

February 4, 2011  
Scott E. Stitt P.E.  
Acting ENGINEER OF DESIGN AND ENVIRONMENT

February 4, 2011  
Christine M. Reed  
DIRECTOR OF HIGHWAYS, CHIEF ENGINEER

**PRINTED BY THE AUTHORITY  
OF THE STATE OF ILLINOIS**



Ted W. Lachus  
TED W. LACHUS, P.E.  
EXPIRES 11-30-2011

1-3-2011  
DATE

**Primera**  
100 S. WACKER DRIVE SUITE 700 CHICAGO IL 60606.  
P:312-606-0910 F:312-606-0415