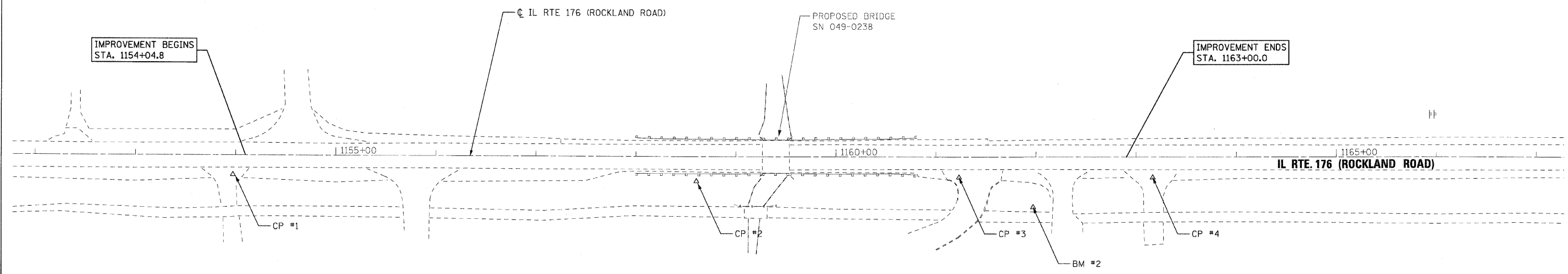




DATE	
BY	
REVISIONS	
PLANNED	
ALIGNED	
CHECKED	
NO. _____	
NOTE BOOK	
NO. _____	
CADD FILE NAME	

DATE	
BY	
REVISIONS	
PLANNED	
ALIGNED	
CHECKED	
NO. _____	
NOTE BOOK	
NO. _____	
CADD FILE NAME	



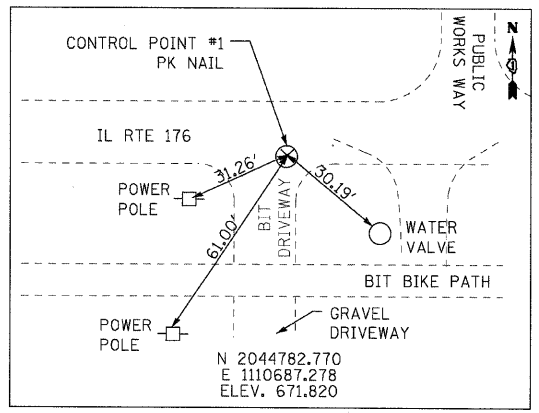
BENCHMARK:
 BM#A
 SQUARE CUT ON NORTH SIDE OF TRAFFIC LIGHT CONCRETE BASE AT THE SOUTHEAST CORNER OF SKOKIE VALLEY ROAD AND IL RTE. 176.
 ELEV = 675.73

BM#2
 CROSS CUT ON SOUTHWEST BOLT OF FIRE HYDRANT AT STA. 116+97, 51' RT.
 ELEV = 675.38

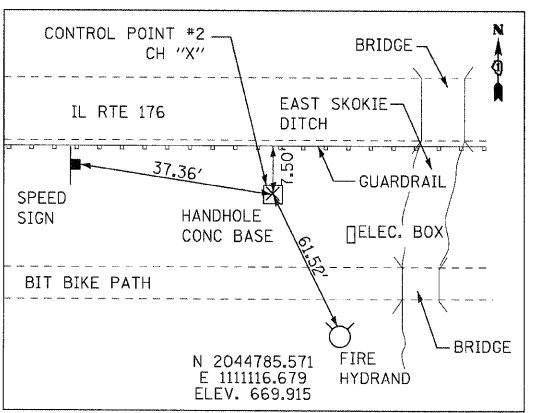
ALIGNMENT COORDINATES - IL-176 (ROCKLAND ROAD)

STATION	NORTHING	EASTING
BEG. 1154+04.8	2044802.047	1110690.617
END 1163+00	2044818.163	1111585.672

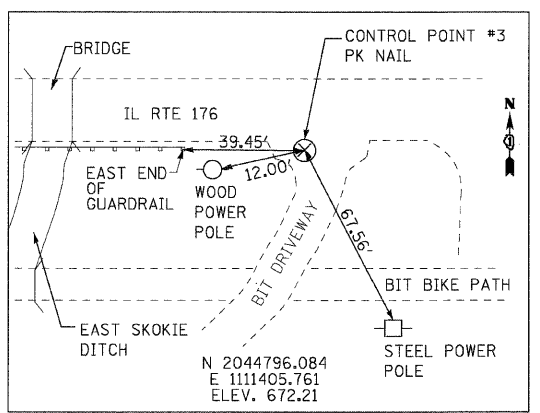
CONTROL POINT #1



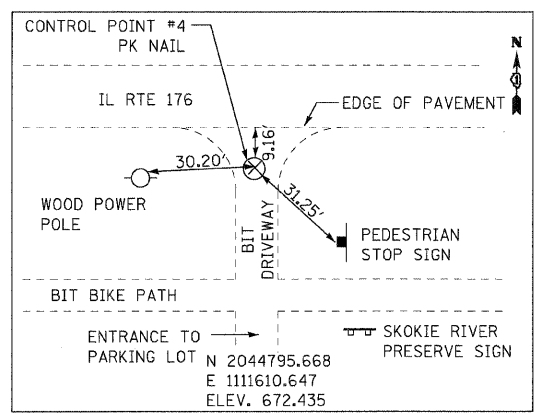
CONTROL POINT #2



CONTROL POINT #3



CONTROL POINT #4



...0160J67-sh1-ctb.dgn
 12/23/2010
 9:42:09 AM



DESIGNED	RJD	REVISED	-
DRAWN	GEW	REVISED	-
CHECKED	RJD	REVISED	-
DATE	JANUARY 3, 2011	REVISED	-

STATE OF ILLINOIS
 DEPARTMENT OF TRANSPORTATION

IL ROUTE 176 OVER EAST SKOKIE DITCH
 ALIGNMENT & TIES

SCALE: 1"=50' SHEET NO. 1 OF 1 SHEETS STA. TO STA.

F.A.U. RTE.	SECTION	COUNTY	TOTAL SHEETS	SHEET NO.
1238	C-B-1	LAKE	61	8
CONTRACT NO. 60J67			ILLINOIS FED. AID PROJECT	