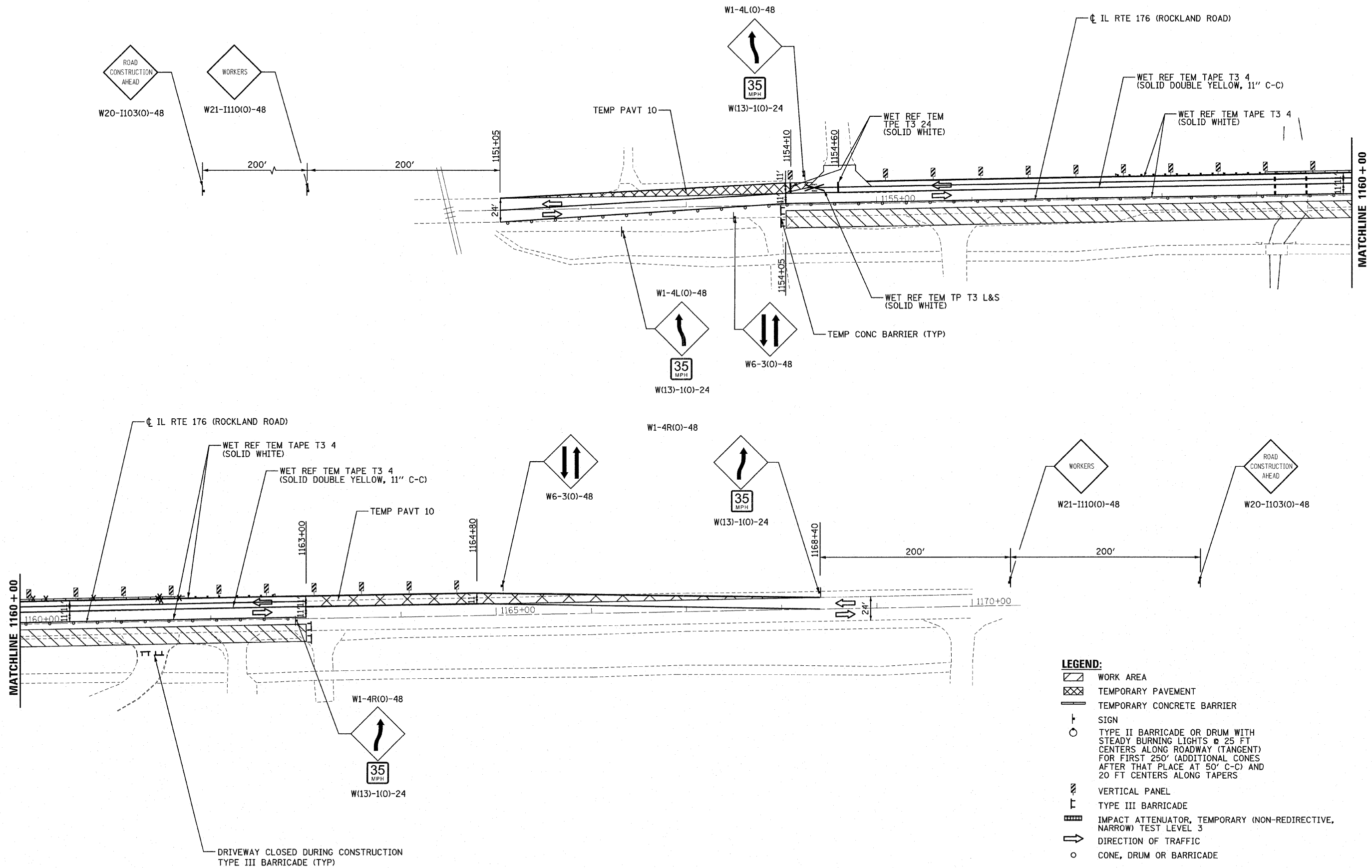


PLAN	SUBMITTED	DATE
	PLOTTED	BY
	ALIGNMENT CHECKED	
	NOTE BOOK	
	CADD FILE NAME	
	NO.	

PLAN	SUBMITTED	DATE
	PLOTTED	BY
	ALIGNMENT CHECKED	
	NOTE BOOK	
	CADD FILE NAME	
	NO.	



- LEGEND:**
- WORK AREA
 - TEMPORARY PAVEMENT
 - TEMPORARY CONCRETE BARRIER
 - SIGN
 - TYPE II BARRICADE OR DRUM WITH STEADY BURNING LIGHTS @ 25 FT CENTERS ALONG ROADWAY (TANGENT) FOR FIRST 250' (ADDITIONAL CONES AFTER THAT PLACE AT 50' C-C) AND 20 FT CENTERS ALONG TAPERS
 - VERTICAL PANEL
 - TYPE III BARRICADE
 - IMPACT ATTENUATOR, TEMPORARY (NON-REDIRECTIVE, NARROW) TEST LEVEL 3
 - DIRECTION OF TRAFFIC
 - CONE, DRUM OR BARRICADE

RD160J67-sht-stag1ng5.dgn
2/1/2011
2:13:47 PM



DESIGNED	JRB	REVISED	- 2/10/2011
DRAWN	JRB	REVISED	-
CHECKED	RJD	REVISED	-
DATE	JANUARY 3, 2011	REVISED	-

STATE OF ILLINOIS
DEPARTMENT OF TRANSPORTATION

IL ROUTE 176 OVER EAST SKOKIE DITCH
SUGGESTED STAGE OF CONSTRUCTION & TRAFFIC CONTROL
STAGE 5
SCALE: 1" = 50' SHEET NO. 1 OF 1 SHEETS STA. TO STA.

F.A.U. RTE.	SECTION	COUNTY	TOTAL SHEETS	SHEET NO.
1238	C-B-1	LAKE	62	16
CONTRACT NO. 60J67				
ILLINOIS FED. AID PROJECT				