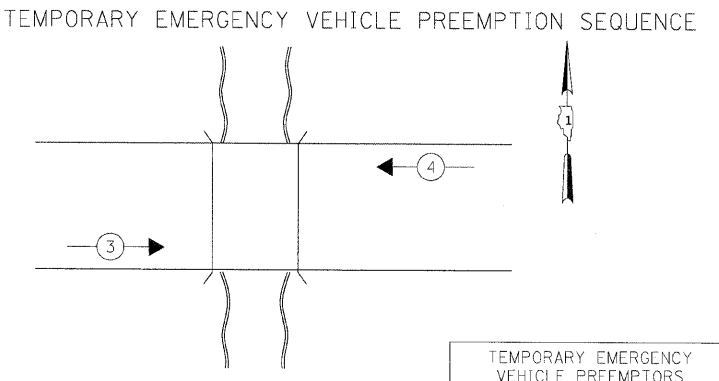


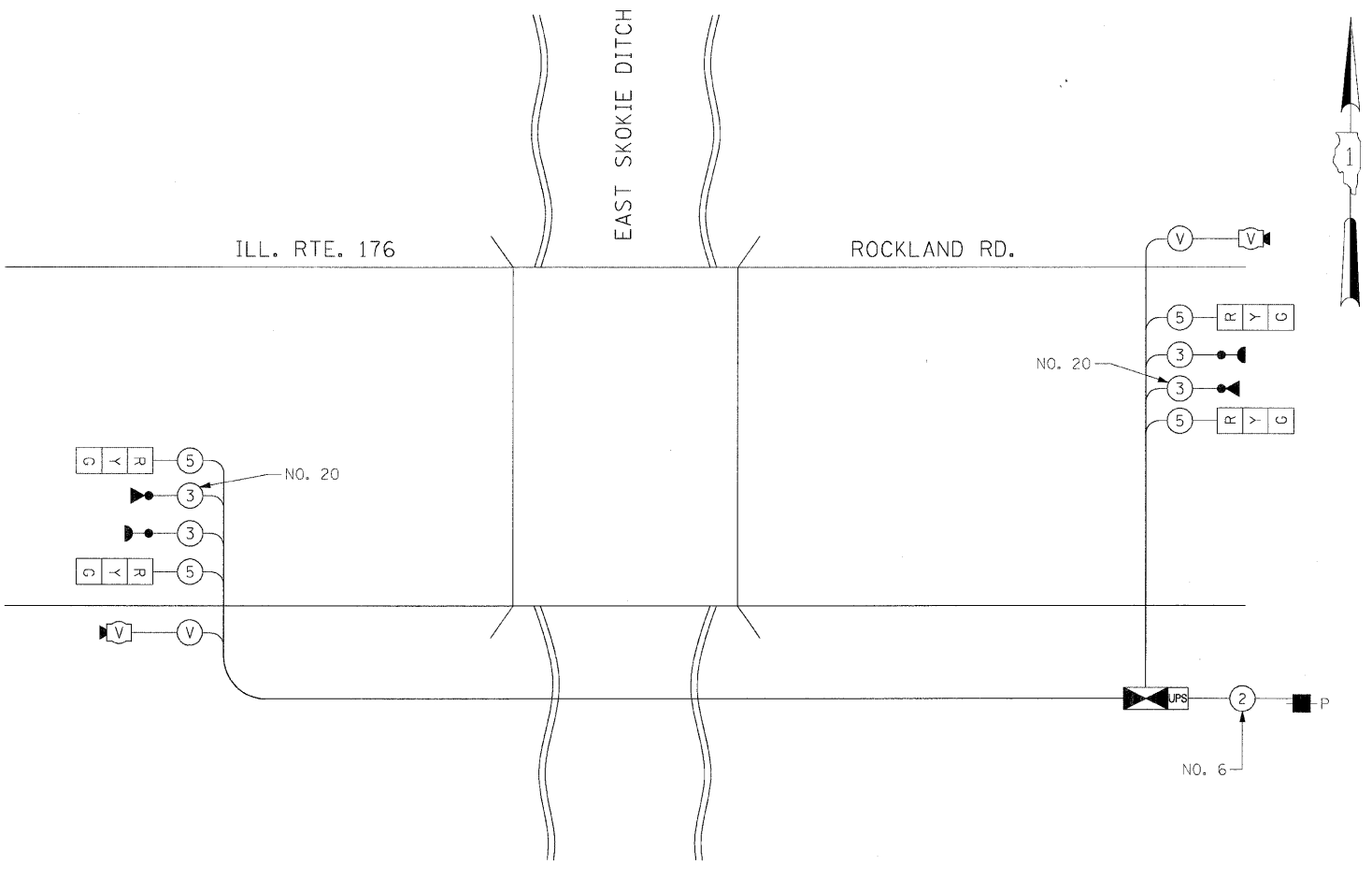
TEMPORARY PHASE DESIGNATION DIAGRAM



TEMPORARY EMERGENCY VEHICLE PREEMPTORS		
EMERGENCY VEHICLE PREEMPTOR	3	4
MOVEMENT	→	←

**SCHEDULE OF QUANTITIES**

QUANTITY	UNIT	ITEM
1	EACH	TEMPORARY BRIDGE TRAFFIC SIGNAL INSTALLATION



**TEMPORARY BRIDGE TRAFFIC SIGNAL CABLE PLAN**  
(NOT TO SCALE)

THE CONTRACTOR SHALL VERIFY THE POWER LOCATION WITH ComEd PRIOR TO COMMENCEMENT OF THE WORK.

I.D.O.T. TRAFFIC SIGNAL INSTALLATION ELECTRICAL SERVICE REQUIREMENTS					TOTAL WATTAGE
TYPE	NO LAMPS	WATTAGE		%OPERATION	
		INCAND.	LED		
SIGNAL (RED)	4	135	17	0.50	34
(YELLOW)	4	135	25	0.25	25
(GREEN)	4	135	15	0.25	15
ARROW		135	12	0.10	
PED. SIGNAL		90	25	1.00	
CONTROLLER		100	100	1.00	100
ILLUM. SIGN				0.05	
VIDEO SYSTEM		150		1.00	150
FLASHER				0.50	
ENERGY COSTS TO:				TOTAL =	324

ILLINOIS DEPARTMENT OF TRANSPORTATION  
201 WEST CENTER COURT  
SCHAUMBURG, ILLINOIS 60156-1096

ENERGY SUPPLY CONTACT: JOE HURLEY  
PHONE: (847) 816-5503  
COMPANY: COMED

FILE NAME =	USER NAME = #USER#	DESIGNED - PKG	REVISED -
#FILE#		DRAWN - EA, MG	REVISED -
	PLOT SCALE = #SCALE#	CHECKED - PKG	REVISED -
	PLOT DATE = #DATE#	DATE - 12/30/2010	REVISED -

**STATE OF ILLINOIS**  
**DEPARTMENT OF TRANSPORTATION**

**TEMPORARY CABLE PLAN, TEMPORARY PHASE DESIGNATION DIAGRAM, SCHEDULE OF QUANTITIES**  
**ILLINOIS ROUTE 176 OVER EAST SKOKIE DITCH (SHEET 2 OF 2)**

F.A.U. RTE. 1238	SECTION C-B-1	COUNTY LAKE	TOTAL SHEETS 61	SHEET NO. 27
CONTRACT NO. 60J67				
FED. ROAD DIST. NO. - [ILLINOIS] FED. AID PROJECT				

SCALE: SHEET NO. OF SHEETS STA. TO STA.