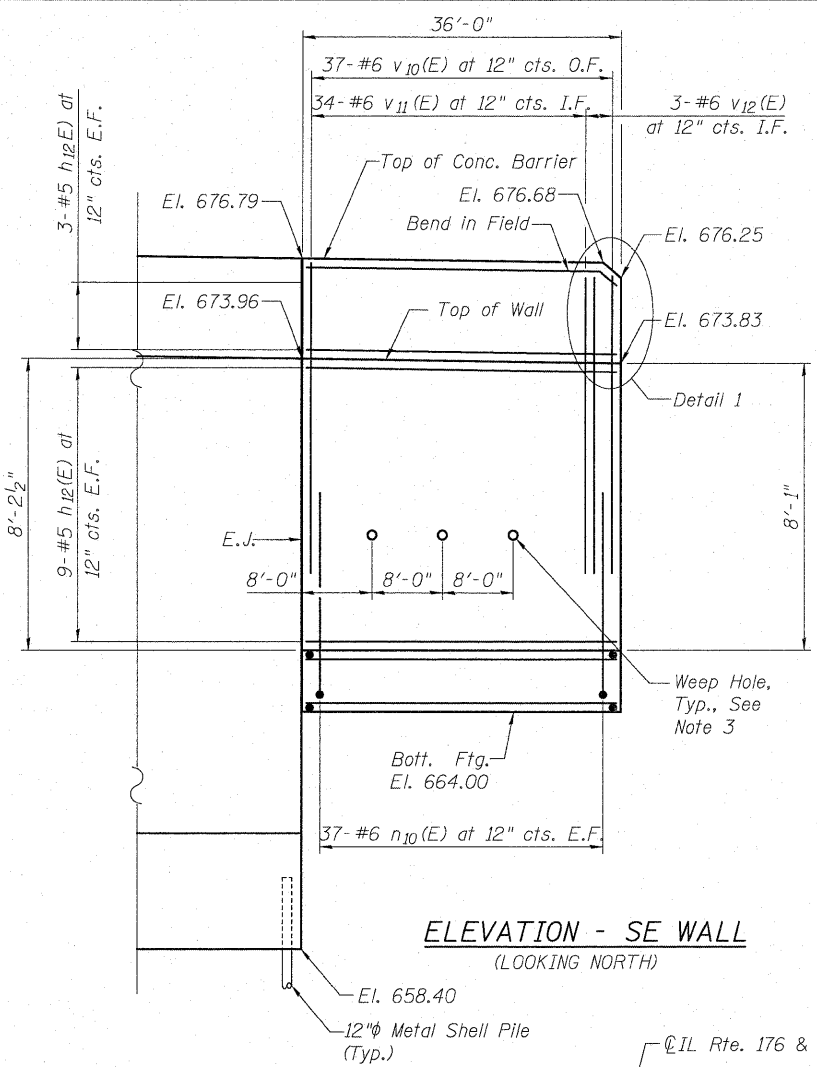
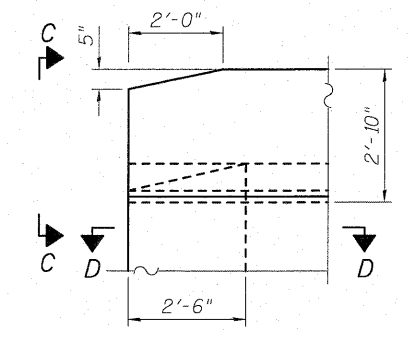


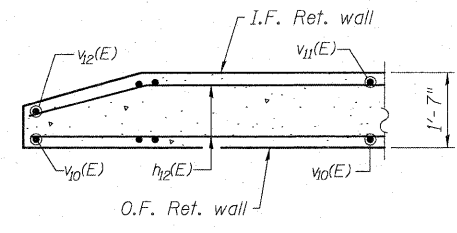
ELEVATION - SW WALL
(LOOKING NORTH)



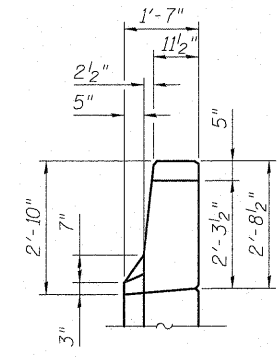
ELEVATION - SE WALL
(LOOKING NORTH)



DETAIL 1



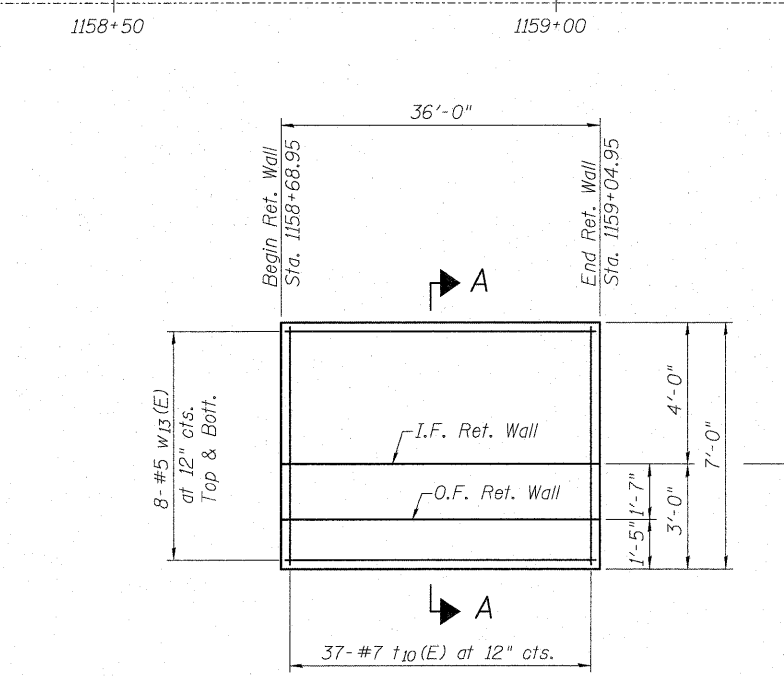
SECTION D-D



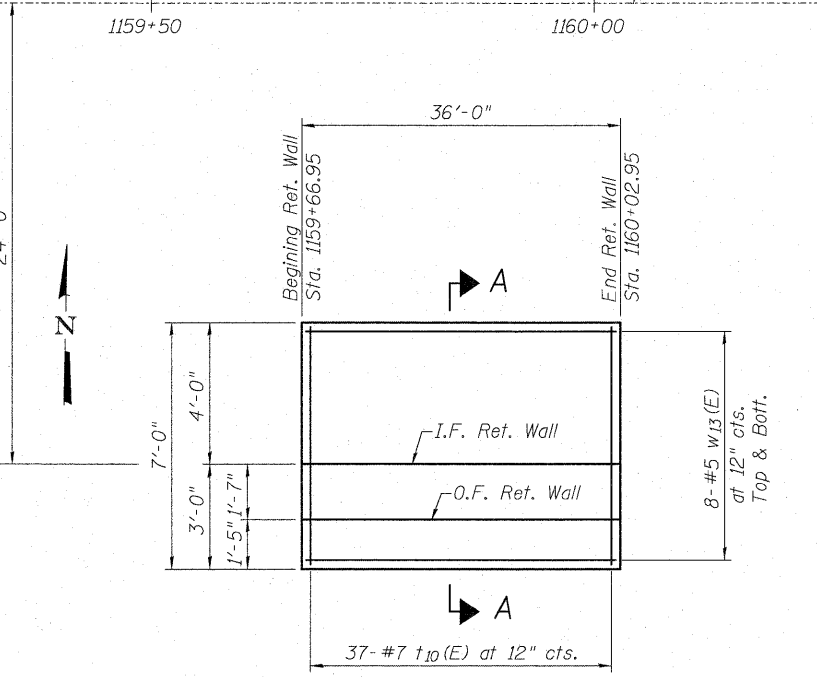
VIEW C-C

BILL OF MATERIAL
SW & SE RETAINING WALLS

Bar	No.	Size	Length	Shape
h ₁₂ (E)	48	#5	35'-8"	
n ₁₀ (E)	148	#6	9'-0"	
t ₁₀ (E)	148	#7	6'-8"	
v ₁₀ (E)	74	#6	8'-0"	
v ₁₁ (E)	68	#6	8'-2"	
v ₁₂ (E)	6	#6	7'-11"	
w ₁₃ (E)	32	#5	35'-8"	
Structure Excavation		Cu. Yd.	117	
Concrete Structures		Cu. Yd.	75.2	
Protective Coat		Sq. Yd.	32	
Reinforcement Bars, Epoxy Coated		Pound	8,790	
Geocomposite Wall Drain		Sq. Yd.	44	
Porous Granular Embankment, Special		Cu. Yd.	57	



PLAN - SW WALL



PLAN - SE WALL

- NOTES:**
- E.J. = Expansion Joint
C.J. = Construction Joint
For Joint Details see Sheet S-14 of S-15.
 - For Section A-A see Sheet S-14 of S-15.
 - Place Weep Hole so that bottom of hole is 1'-0" above Finished Grade Elevation at the Outside Face Retaining Wall. Place in Wall Panel adjacent to Wingwall only.
 - Minimum lap lengths.
#4 = 2'-0"
#5 = 2'-6"
#6 = 3'-0"



USER NAME =	DESIGNED - JXH	REVISED -
PLOT SCALE =	CHECKED - JW	REVISED -
PLOT DATE =	DRAWN - JLS	REVISED -
	CHECKED - JXH/JW	REVISED -

STATE OF ILLINOIS
DEPARTMENT OF TRANSPORTATION

SW & SE RETAINING WALL - PLAN AND ELEVATIONS
STATION 1158 + 68.95 TO STATION 1161 + 72.95

SHEET NO. S-12 OF S-15 SHEETS

F.A.U. RTE. 1238	SECTION C-BR	COUNTY LAKE	TOTAL SHEETS 61	SHEET NO. 40
DATE: 1-28-2011			ILLINOIS FED. AID PROJECT	
			CONTRACT NO. 60J67	