

TEMPORARY BENCHMARK "D"

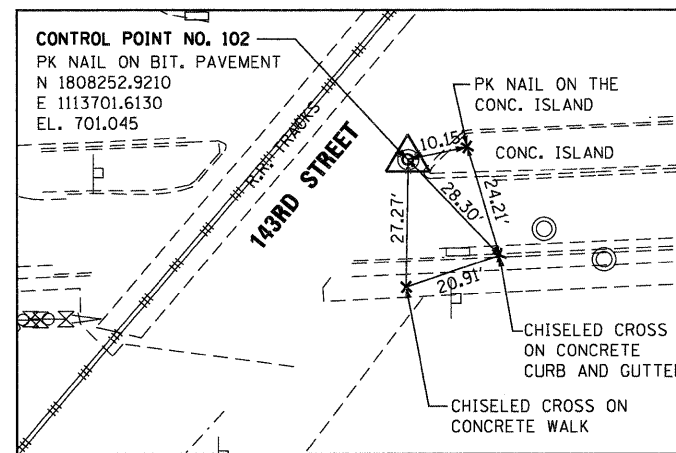
CHISELED CROSS ON THE NE'LY ANCHOR BOLT OF THE ELECTRIC BILLBOARD SIGN, ±50' NW'LY OF SW'LY PLATFORM OF METRA STATION.
 N 1808925.7770
 E 1114323.0220
 EL. 699.845

TEMPORARY BENCHMARK "2"

CHISELED CROSS ON THE NE'LY BOLT OF W'LY LIGHT POLE ±60 FT. NORTH OF N'LY EDGE OF SOUTHWEST HIGHWAY BRIDGE.
 N 1810394.3530
 E 1115239.3170
 EL. 678.745

TEMPORARY BENCHMARK "F"

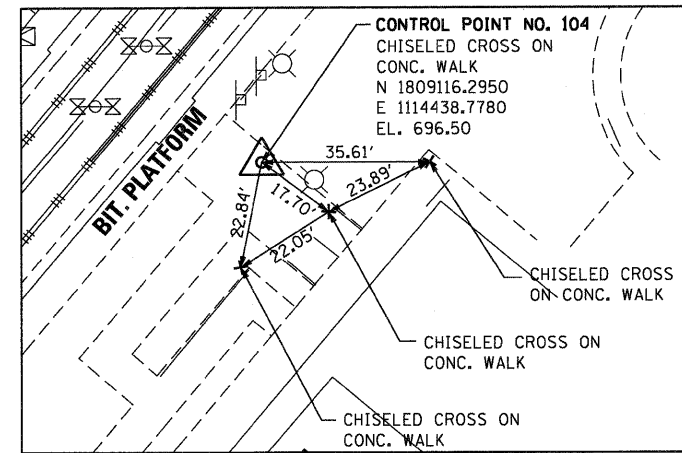
SET RR SPIKE ON NE SIDE OF POWER POLE LOCATED WEST OF BITUMINOUS/GRAVEL DRIVEWAY, ±900 FT. E. OF LAGRANGE ROAD ±45 FT. SOUTH OF Q SOUTHWEST HIGHWAY.
 N 1810949.7535
 E 1115793.8830
 EL. 682.63



LOCATION DESCRIPTION: STA. 4220+46.13, 22.89' EAST OF Q RAILROAD TRACKS. 0.18 MILES SOUTH OF THE WEST EDGE OF METRA STATION BUILDING.

CONTROL POINT NO. 102

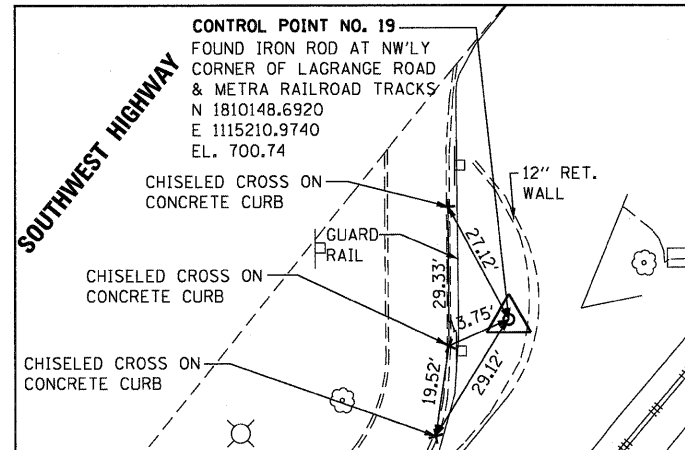
SCALE: 1" = 20'



LOCATION DESCRIPTION: STA. 4209+10.83, 27.86' EAST OF Q EASTBOUND RAILROAD TRACKS. 25.69' NORTH OF EAST EDGE OF METRA STATION BUILDING.

CONTROL POINT NO. 104

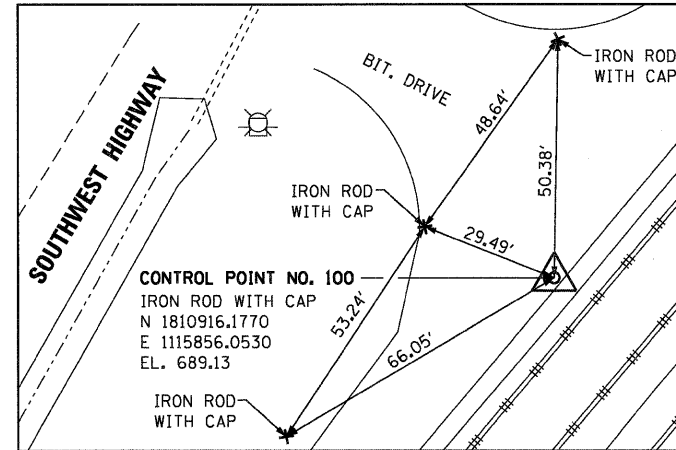
SCALE: 1" = 20'



LOCATION DESCRIPTION: STA. 4196+23.93, 36.11' WEST OF Q WESTBOUND RAILROAD TRACKS. 66.21' FROM INTERSECTION OF LAGRANGE ROAD AND Q EASTBOUND RR TRACKS.

CONTROL POINT NO. 19

SCALE: 1" = 20'



LOCATION DESCRIPTION: STA. 4186+21.36, 9.66' WEST OF Q WESTBOUND RAILROAD TRACKS. 83.00' EAST OF THE SOUTH END OF THE DRAINAGE CULVERT.

CONTROL POINT NO. 100

SCALE: 1" = 20'

FILE NAME = D160K64-SHT-ATB02.dgn	USER NAME = MTomasze	DESIGNED - JPW	REVISED -
		DRAWN - JPW	REVISED -
		CHECKED - BA	REVISED -
		DATE - 12/17/10	REVISED -

**STATE OF ILLINOIS
 DEPARTMENT OF TRANSPORTATION**

ALIGNMENT TIES AND BENCHMARKS			
SCALE: 1"=20'	SHEET NO. 2 OF 2 SHEETS	STA.	TO STA.

F.A.P. RTE.	SECTION	COUNTY	TOTAL SHEETS	SHEET NO.
330	73 R-B	COOK	136	12
TB-02			CONTRACT NO. 60K64	
ILLINOIS FED. AID PROJECT				