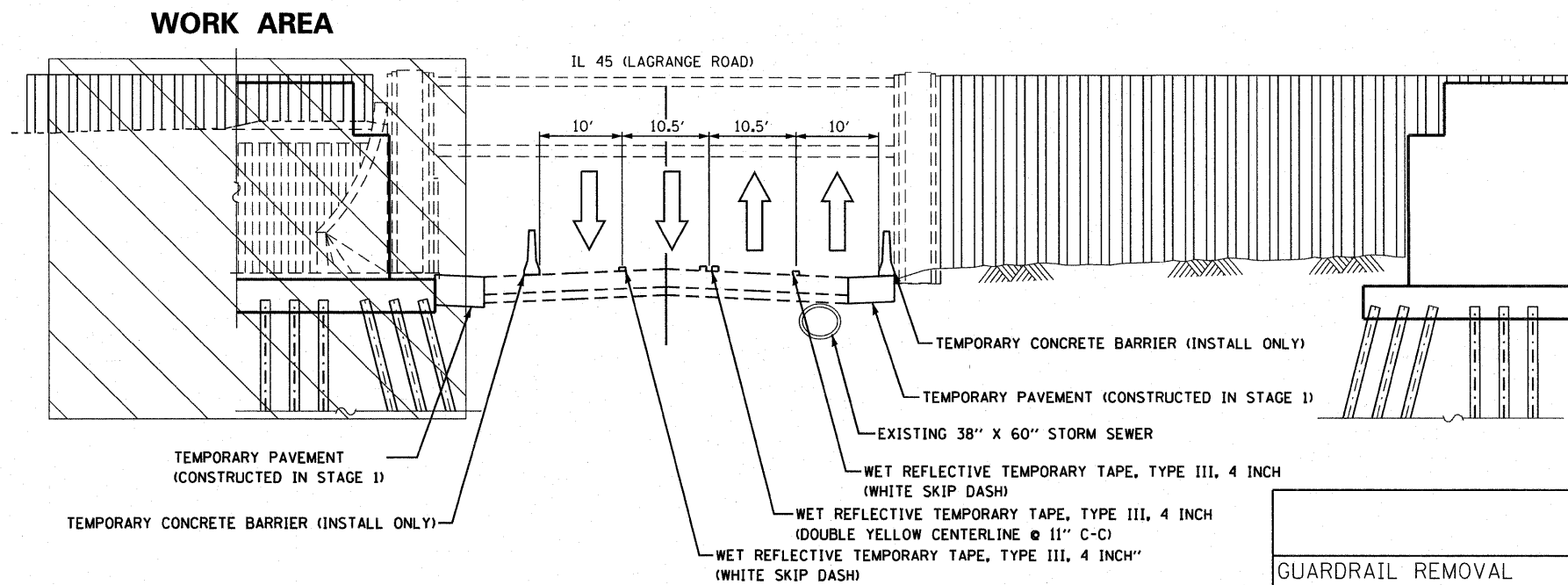


STAGE 1: MAINTENANCE OF TRAFFIC TYPICAL SECTION - LAGRANGE ROAD
STA. 291+00 TO STA. 297+00 (OFF-PEAK LANE CLOSURE)



STAGE 2: MAINTENANCE OF TRAFFIC TYPICAL SECTION - LAGRANGE ROAD
STA. 291+00 TO STA. 297+00

M.O.T. GENERAL NOTES

1. REMOVAL OF EXISTING PAVEMENT MARKINGS SHALL BE PAID FOR AS "PAVEMENT MARKING REMOVAL." REMOVAL OF SHORT TERM OR TEMPORARY PAVEMENT MARKINGS SHALL BE PAID FOR AS "WORK ZONE PAVEMENT MARKING REMOVAL."
2. OPPOSING LANES OF TRAFFIC ON LAGRANGE ROAD WILL BE DELIMITED AT ALL TIMES THROUGHOUT CONSTRUCTION BY TWO 4-INCH YELLOW TEMPORARY PAVEMENT MARKING LINES AT 11-INCH CENTERS.
3. ACCESS TO DRIVEWAYS AND SIDE ROADS IS TO BE MAINTAINED DURING CONSTRUCTION.
4. CONSTRUCTION OF THE AT-GRADE CROSSING OF THE RAILROAD AND 143RD STREET WILL TAKE PLACE DURING A COMPLETE CLOSURE OF 143RD STREET. THE DATE AND DURATION SHALL BE DETERMINED BY THE RESIDENT ENGINEER AND METRA.
5. COORDINATE MAINTENANCE OF TRAFFIC WITH ADJACENT 143RD STREET AND LAGRANGE INTERSECTION IMPROVEMENTS.
6. ADJUST DRAINAGE STRUCTURES AND REINFORCE FOR TRAFFIC LOAD USING A 1" STEEL PLATE WITH HOLES CUT FOR DRAINAGE. TACK WELD PLATE TO STRUCTURE.
7. LOCATION OF THE STORM SEWER IS APPROXIMATE.
 - A. CONTRACTOR TO LOCATE AND DEVISE A PLAN TO SUPPORT THE SEWER DURING EXCAVATION FOR THE CENTER PIER FOUNDATION.
 - B. CONTRACTOR TO VISIT SITE PRIOR TO BIDDING. ANY WORK TO INVESTIGATE THE LOCATION OF THE SEWER SHALL BE PERFORMED DURING OFF PEAK HOURS.

RECOMMENDED SEQUENCE:

1. DETERMINE LOCATION OF THE STORM SEWER.
2. FORMULATE A PLAN TO SUPPORT/BYPASS THE SEWER DURING CENTER PIER CONSTRUCTION.
3. PLACE TEMPORARY PAVEMENT ALONG EAST SIDE OF LAGRANGE ROAD.
4. SHIFT TRAFFIC ONTO TEMPORARY PAVEMENT.
5. CONSTRUCT WEST ABUTMENT.
6. PLACE TEMPORARY PAVEMENT ALONG WEST SIDE OF LAGRANGE ROAD.
7. SHIFT TRAFFIC TO NEWLY PLACED TEMPORARY PAVEMENT.
8. CONSTRUCT CENTER PIER WHILE IMPLEMENTING CONTRACTOR DESIGNED PLAN TO MAINTAIN EXISTING STORM SEWER/DRAINAGE SYSTEM DURING CONSTRUCTION.

ITEM	UNIT	STAGE 1	STAGE 2	STAGE 3	STAGE 4	TOTALS
GUARDRAIL REMOVAL	FOOT	690				690
PAVEMENT REMOVAL	SQ YD	637		348	289	1274
COMBINATION CURB AND GUTTER REMOVAL	FOOT	1275				1275
TEMPORARY PAVEMENT	SQ YD	637		74*		711
TEMPORARY CONCRETE BARRIER (INSTALL ONLY)	FOOT		1000			1000
WET REFLECTIVE TEMPORARY TAPE, TYPE III, 4 INCH	FOOT		3024	3181		6205
IMPACT ATTENUATORS, TEMPORARY (FULLY REDIRECTIVE)	EACH		2			2
IMPACT ATTENUATORS, RELOCATE (FULLY REDIRECTIVE)	EACH			2		2
IMPACT ATTENUATORS (FULLY REDIRECTIVE)	EACH				2	2
RELOCATE TEMPORARY CONCRETE BARRIER, STATE OWNED	FOOT			1000	1000	2000
COMBINATION CONCRETE CURB AND GUTTER, TYPE B-6.12	FOOT			625	650	1275

*QUANTITY USED BETWEEN STAGES 3 AND 4.