

LEGEND

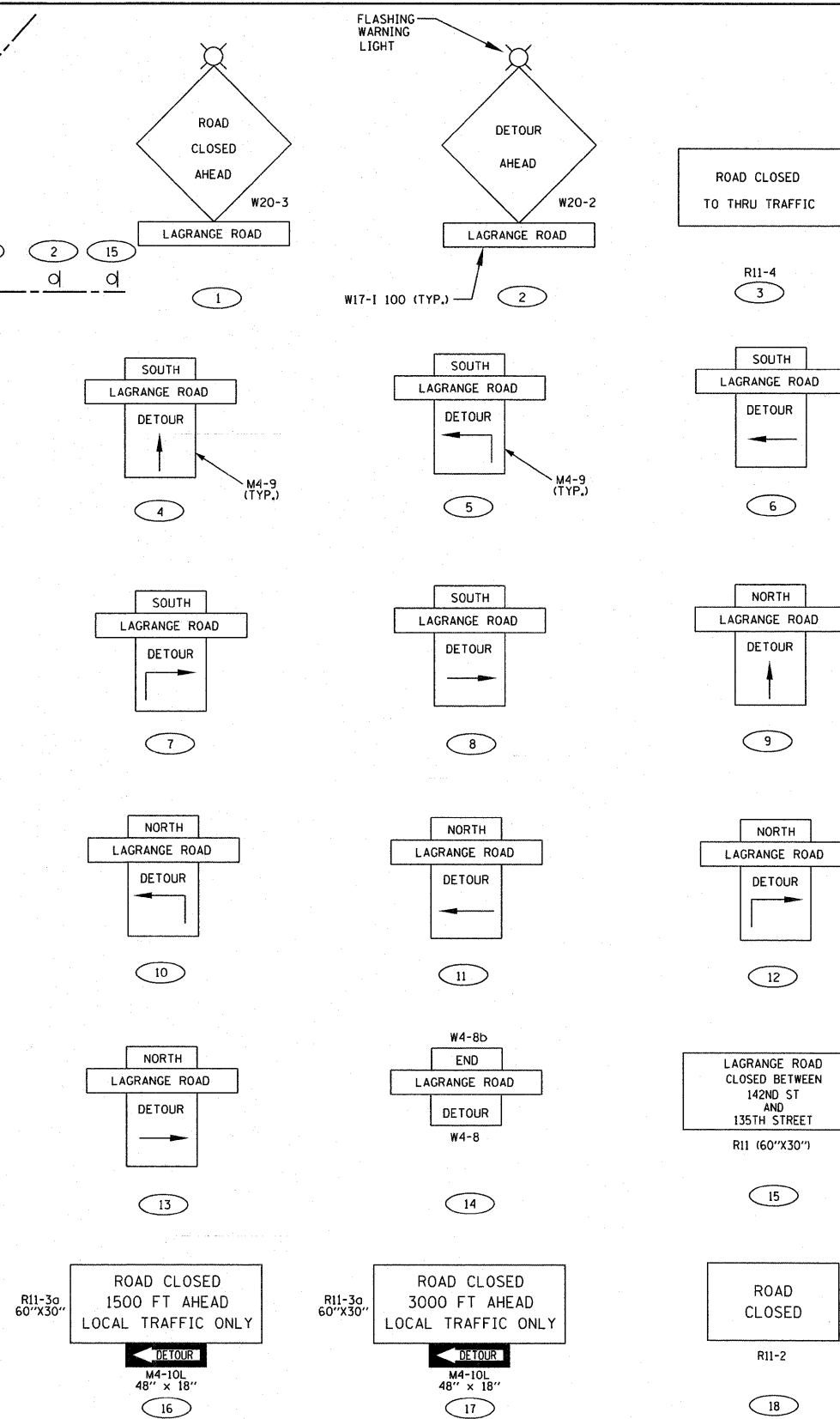
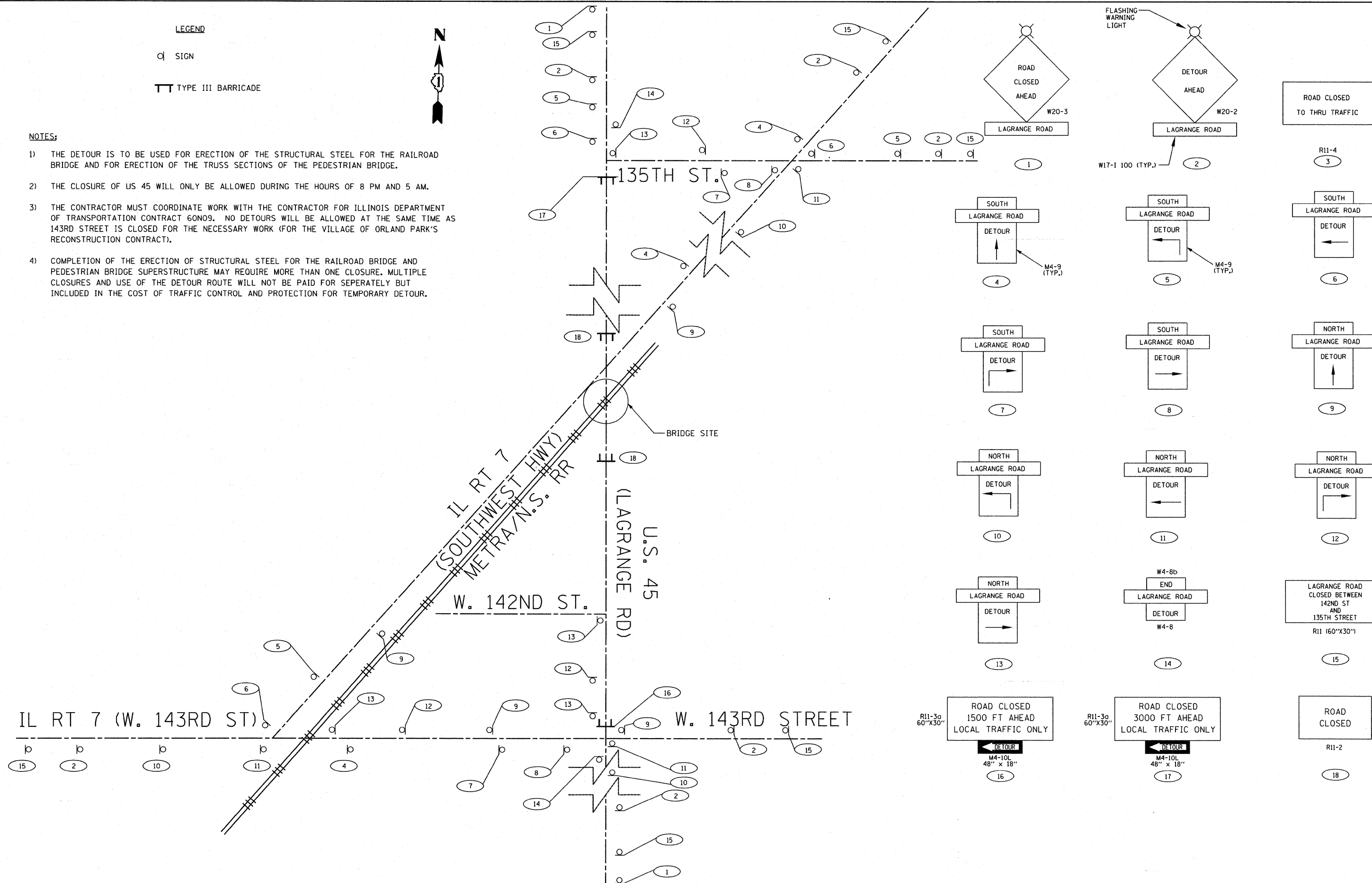
□ SIGN

TT TYPE III BARRICADE



NOTES:

- 1) THE DETOUR IS TO BE USED FOR ERECTION OF THE STRUCTURAL STEEL FOR THE RAILROAD BRIDGE AND FOR ERECTION OF THE TRUSS SECTIONS OF THE PEDESTRIAN BRIDGE.
- 2) THE CLOSURE OF US 45 WILL ONLY BE ALLOWED DURING THE HOURS OF 8 PM AND 5 AM.
- 3) THE CONTRACTOR MUST COORDINATE WORK WITH THE CONTRACTOR FOR ILLINOIS DEPARTMENT OF TRANSPORTATION CONTRACT 60N09. NO DETOURS WILL BE ALLOWED AT THE SAME TIME AS 143RD STREET IS CLOSED FOR THE NECESSARY WORK (FOR THE VILLAGE OF ORLAND PARK'S RECONSTRUCTION CONTRACT).
- 4) COMPLETION OF THE ERECTION OF STRUCTURAL STEEL FOR THE RAILROAD BRIDGE AND PEDESTRIAN BRIDGE SUPERSTRUCTURE MAY REQUIRE MORE THAN ONE CLOSURE. MULTIPLE CLOSURES AND USE OF THE DETOUR ROUTE WILL NOT BE PAID FOR SEPERATELY BUT INCLUDED IN THE COST OF TRAFFIC CONTROL AND PROTECTION FOR TEMPORARY DETOUR.



McDonough Associates Inc.
 Engineers / Architects
 130 East Randolph Street Chicago, Illinois 60601

FILE NAME = D160K64-SHT-STAGING03.dgn	USER NAME = j1etour	DESIGNED - TRK	REVISED -	STATE OF ILLINOIS DEPARTMENT OF TRANSPORTATION	SUGGESTED STAGES OF CONSTRUCTION - TEMPORARY DETOUR PLAN FOR ERECTING GIRDERS AND PEDESTRIAN BRIDGE	F.A.P. RTE. 330	SECTION 73 R-B	COUNTY COOK	TOTAL SHEETS 136	SHEET NO. 22		
PLOT SCALE = 1:100	CHECKED - MJT	REVISOR -	REVISOR -			MN-03		CONTRACT NO. 60K64		ILLINOIS FED. AID PROJECT		
PLOT DATE = 1/27/2011	DATE - 12/17/10	REVISOR -	REVISOR -			SCALE: N.T.S.	SHEET NO. 1 OF 1 SHEETS	STA.	TO STA.			