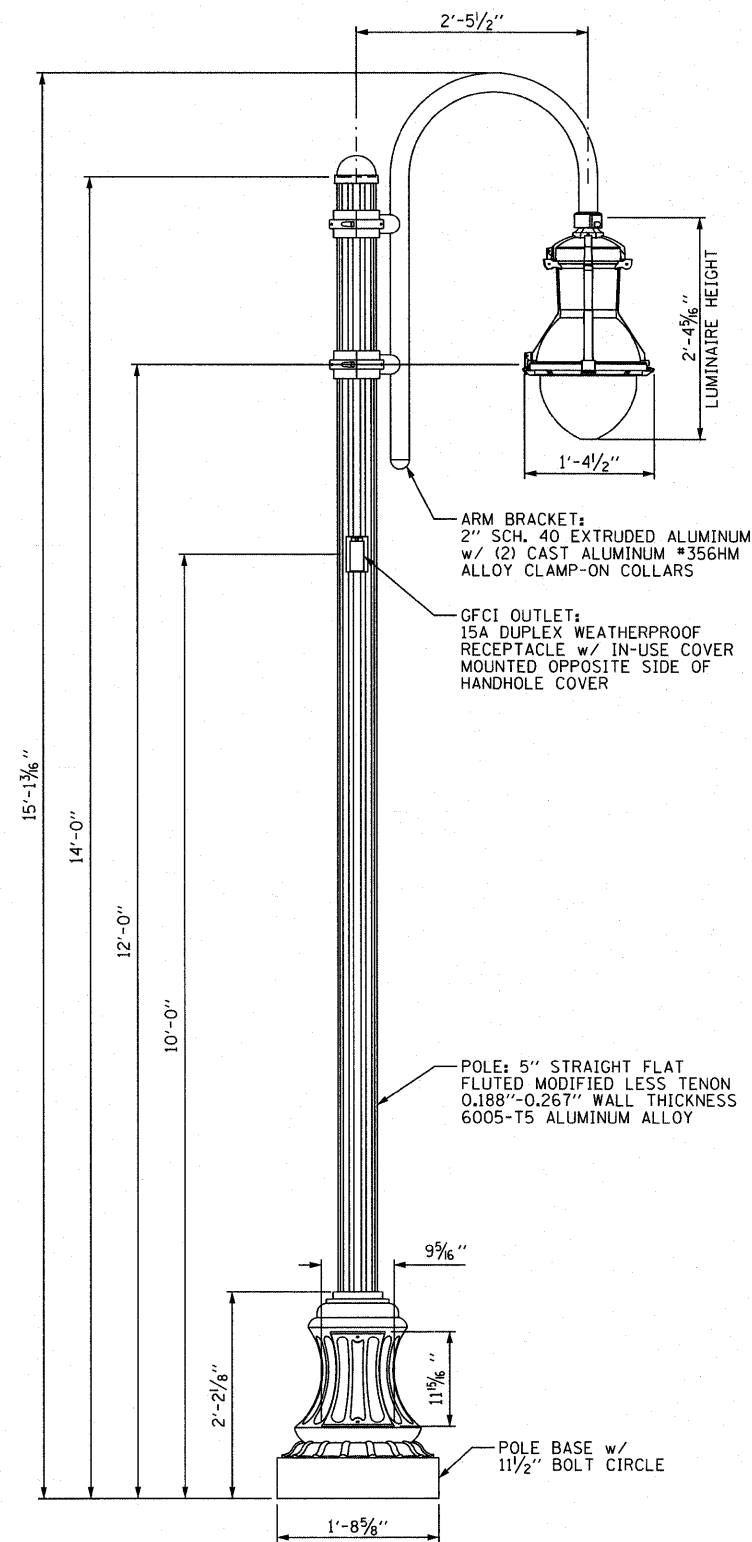
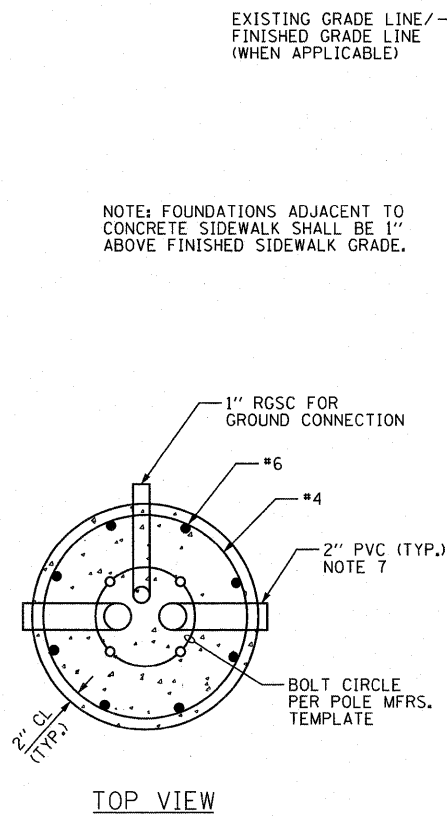


LIGHT POLE FOUNDATION NOTES:

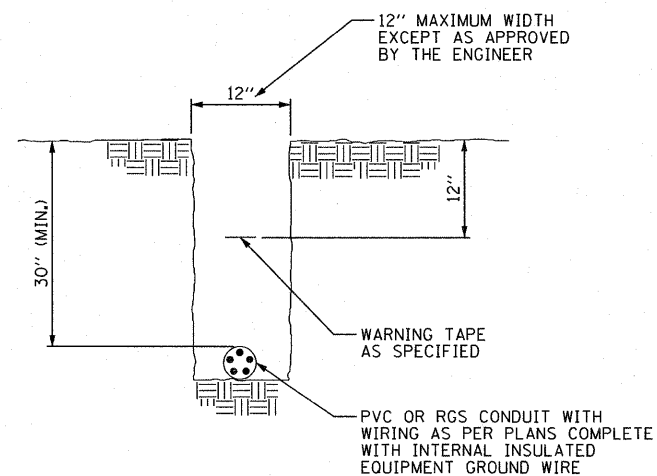
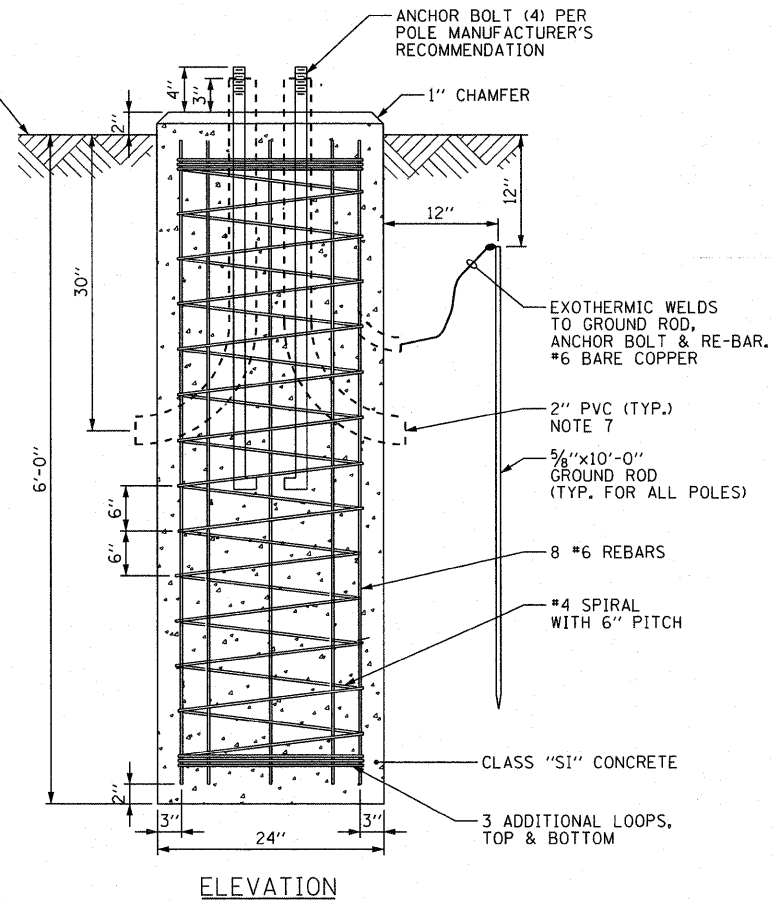
1. MINIMUM UNCONFINED COMPRESSIVE STRENGTH FOR COHESIVE SOILS $Q_u = .8$ TONS PER SQ. FT. MINIMUM STANDARD PENETRATION TEST VALUE FOR GRANULAR SOILS $N = 10$ BLOWS PER FOOT.
2. MINIMUM COMPRESSIVE STRENGTH FOR CONCRETE SHALL BE 3500 PSI AT THE END OF 28 DAYS.
3. ALL REINFORCEMENT SHALL BE EPOXY COATED WITH A MINIMUM YIELD POINT OF 60000 PSI.
4. THE ANCHOR BOLTS AND RACEWAYS SHALL BE PROPERLY SECURED IN PLACE BEFORE THE CONCRETE IS PLACED IN FORMS.
5. EXCAVATION FOR THE POLE FOUNDATION SHALL BE WITH AN AUGER 24 INCHES IN DIAMETER.
6. THE COST OF GROUND ROD, ASSOCIATED WIRING, AND TERMINATIONS SHALL BE INCLUDED IN "LIGHT POLE FOUNDATION" PAY ITEM. NO SEPARATE PAYMENT WILL BE MADE.
7. TRANSITION TO 1/4" CNC AT END OF PVC CONDUIT ELBOW.



LIGHT POLE TYPE 4A DETAIL
N.T.S.



LIGHT POLE TYPE 4A FOUNDATION DETAIL
N.T.S. (SEE NOTES 1 THROUGH 7)



TYPICAL WIRING IN TRENCH DETAIL
N.T.S.

FILE NAME = D160K64-SHT-ED1.dgn	USER NAME = jlatour	DESIGNED - JLW	REVISED -	STATE OF ILLINOIS DEPARTMENT OF TRANSPORTATION	MULTI-USE PATH LIGHTING LIGHTING STANDARD, TYPE 4A & ELECTRICAL DETAILS			F.A.P. RTE. 330	SECTION 73 R-B	COUNTY COOK	TOTAL SHEETS 136	SHEET NO. 48
PLOT SCALE = 1:1	CHECKED - KMY	DRAWN - CJM	REVISED -		SCALE: NONE	SHEET NO. 1 OF 1 SHEETS	STA. TO STA.	ED-1		CONTRACT NO. 60K64		
PLOT DATE = 1/27/2011	DATE - 12/17/10	CHECKED - KMY	REVISED -		ILLINOIS FED. AID PROJECT							
		DATE - 12/17/10	REVISED -									