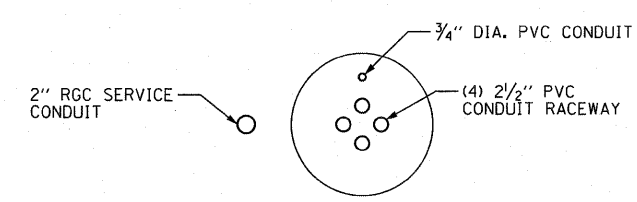
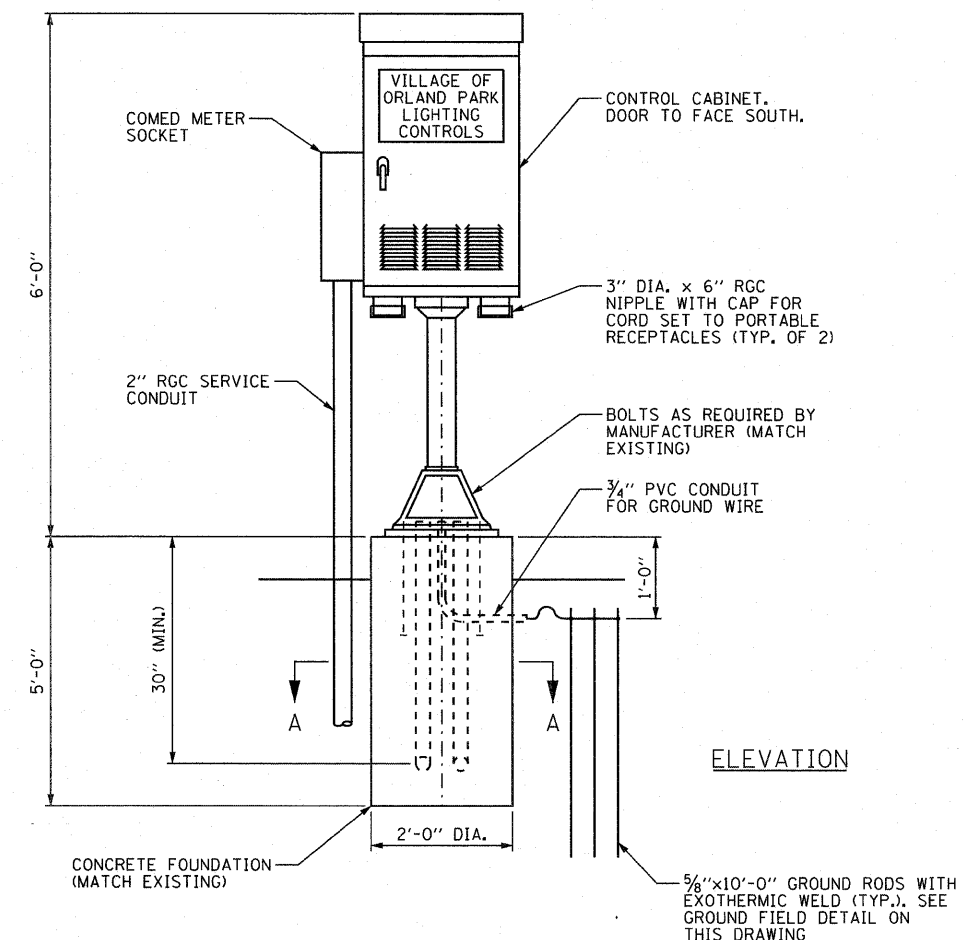
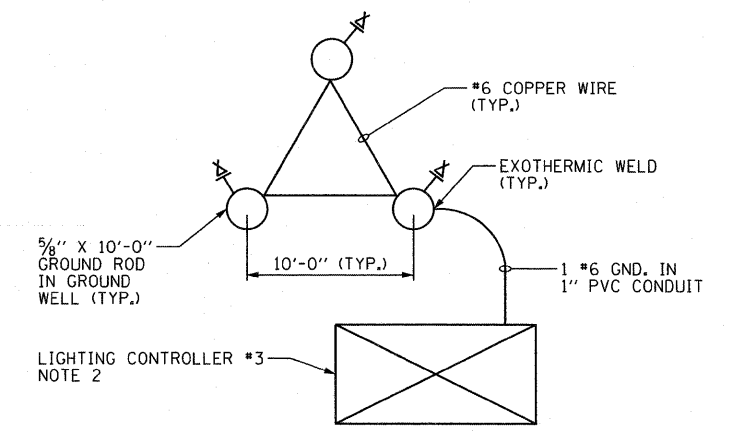


NOTES:

1. SEE DRAWING GE-1 FOR ELECTRICAL SYMBOL LIST, ABBREVIATIONS, AND GENERAL NOTES.
2. THE CONTRACTOR SHALL PROVIDE GROUND FIELD FOR THE RELOCATED LIGHTING CONTROLLER. THE COST OF THIS WORK SHALL BE INCLUDED IN THE COST OF "RELOCATE EXISTING LIGHTING CONTROLLER" PAY ITEM. SEPARATE PAYMENT WILL NOT BE MADE.



CONTROLLER #3 CABINET AND FOUNDATION DETAIL
N.T.S.



GROUND FIELD DETAIL
N.T.S.

FILE NAME = D160K64-SHT-ED4.dgn	USER NAME = jlatour	DESIGNED - JLW	REVISED -	STATE OF ILLINOIS DEPARTMENT OF TRANSPORTATION	MULTI-USE PATH LIGHTING LIGHTING CONTROLLER #3 DETAILS			F.A.P. RTE. 330	SECTION 73 R-B	COUNTY COOK	TOTAL SHEETS 136	SHEET NO. 51
PLOT SCALE = 1:1	CHECKED - KMY	DRAWN - CJM	REVISED -		SCALE: NONE	SHEET NO. 1 OF 1 SHEETS	STA. TO STA.	ED-4				
PLOT DATE = 1/27/2011	DATE - 12/17/10	CHECKED - KMY	REVISED -		CONTRACT NO. 60K64							
		DATE - 12/17/10	REVISED -		ILLINOIS FED. AID PROJECT							