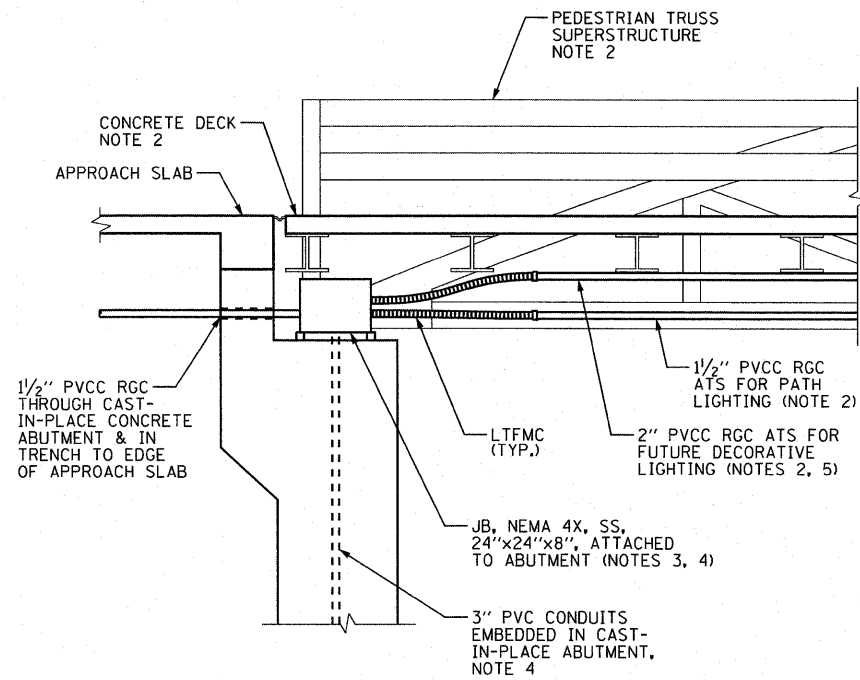
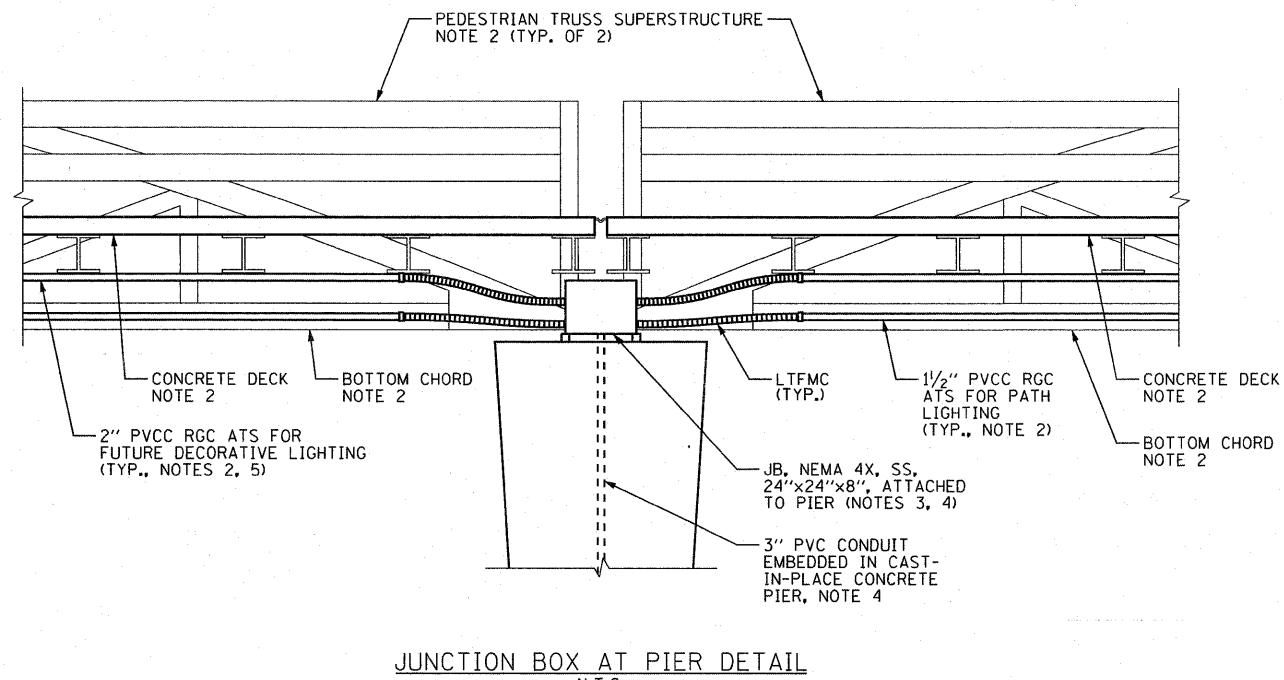


NOTES:

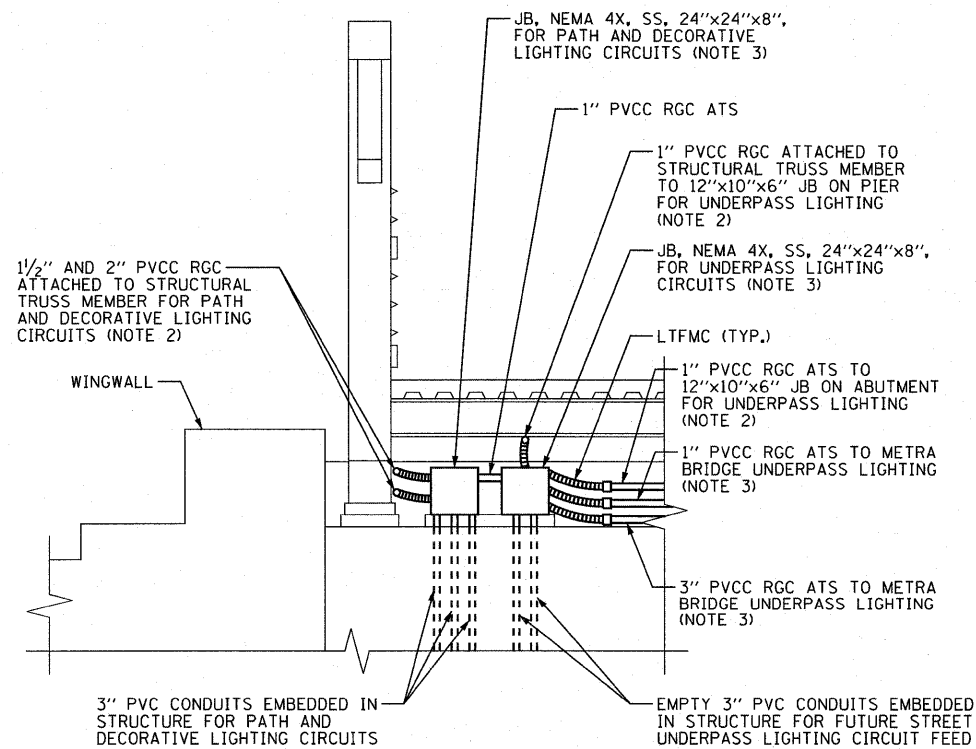
- SEE DRAWING GE-1 FOR ELECTRICAL SYMBOL LIST, ABBREVIATIONS, AND GENERAL NOTES.
- CONDUITS ATTACHED TO BRIDGE SUPERSTRUCTURE SHALL BE CONCEALED BELOW CONCRETE DECK AND BETWEEN BOTTOM CHORDS AS MUCH AS POSSIBLE. CONTRACTOR SHALL COORDINATE CONDUIT INSTALLATION WITH TRUSS SUPERSTRUCTURE MANUFACTURER.
- JUNCTION BOXES SHALL BE SUPPORTED FROM SS CHANNELS ATTACHED TO BRIDGE SUPERSTRUCTURE OR PIER. CONTRACTOR SHALL USE LIQUID-TIGHT FLEXIBLE METAL CONDUIT, 3'-0" LENGTH MAXIMUM, TO CONNECT CONDUITS ATTACHED TO STRUCTURE TO JUNCTION BOX, COST OF FLEXIBLE METAL CONDUIT AND SS CHANNEL SUPPORT SHALL BE INCLUDED IN THE COST OF "JUNCTION BOX, STAINLESS STEEL, ATTACHED TO STRUCTURE, 24"x24"x 8" " PAY ITEM.
- REFER TO STRUCTURE NO. 016-7702 DRAWINGS FOR CONDUITS EMBEDDED WITHIN ABUTMENTS AND PIER. COORDINATE JUNCTION BOX INSTALLATIONS WITH THE STRUCTURAL WORK.
- CONDUIT SHALL CONTAIN 2-1/2 #10 AND 1/2 #10 GND FOR TEMPORARY POWER FEED TO UNDERPASS LIGHTING UNTIL THE UNDERPASS LIGHTING IS TRANSFERRED TO FUTURE LAGRANGE ROAD LIGHTING SYSTEM INSTALLED IN SUBSEQUENT CONTRACT FOR LAGRANGE ROAD RECONSTRUCTION PROJECT.



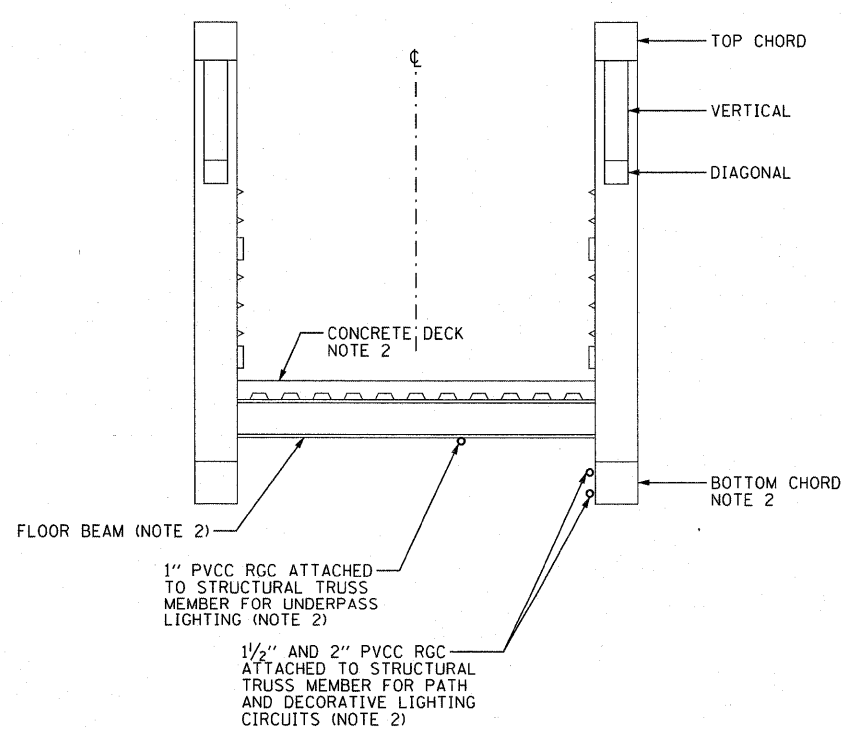
JUNCTION BOX AT ABUTMENT DETAIL
N.T.S.



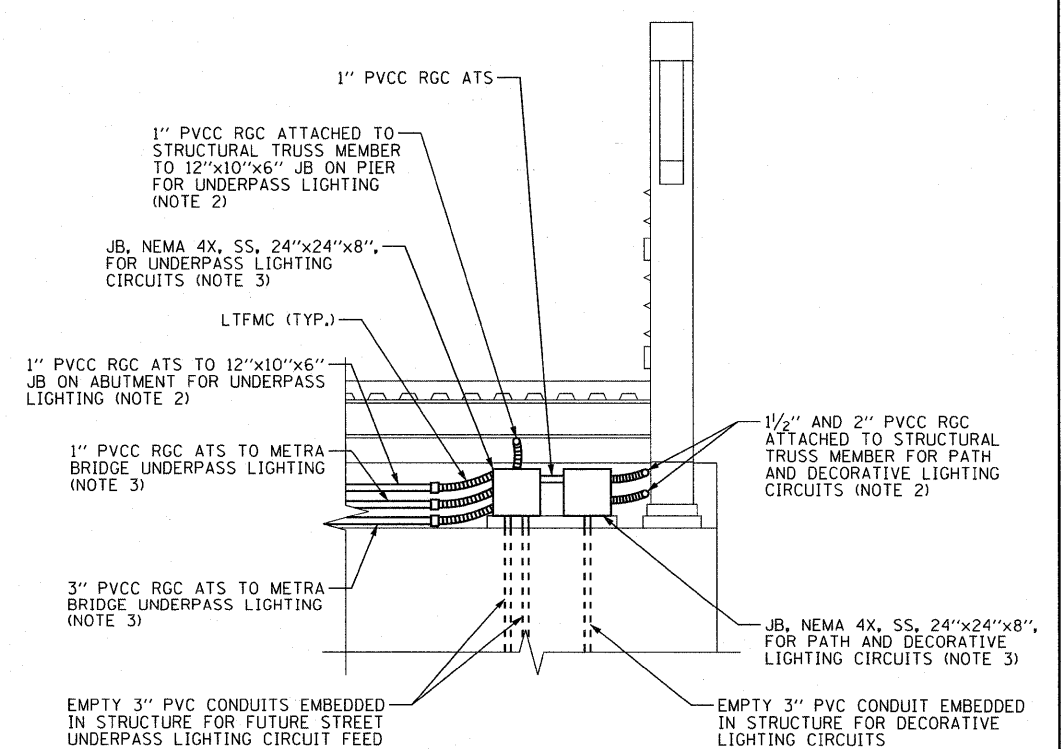
JUNCTION BOX AT PIER DETAIL
N.T.S.



PEDESTRIAN BRIDGE WEST ABUTMENT ELEVATION
N.T.S. (LOOKING WEST)



TRUSS SUPERSTRUCTURE SECTION
N.T.S. (LOOKING EAST)



PEDESTRIAN BRIDGE EAST ABUTMENT ELEVATION
N.T.S. (LOOKING EAST)

FILE NAME = D160K64-SHT-ED5.dgn	USER NAME = jletour	DESIGNED - JLW	REVISED -
	PLOT SCALE = 1:1	DRAWN - CJM	REVISED -
	PLOT DATE = 1/27/2011	CHECKED - KMY	REVISED -
		DATE - 12/17/10	REVISED -

F.A.P. RTE. 330	SECTION 73 R-B	COUNTY COOK	TOTAL SHEETS 136	SHEET NO. 52
ED-5			CONTRACT NO. 60K64	
ILLINOIS FED. AID PROJECT				