

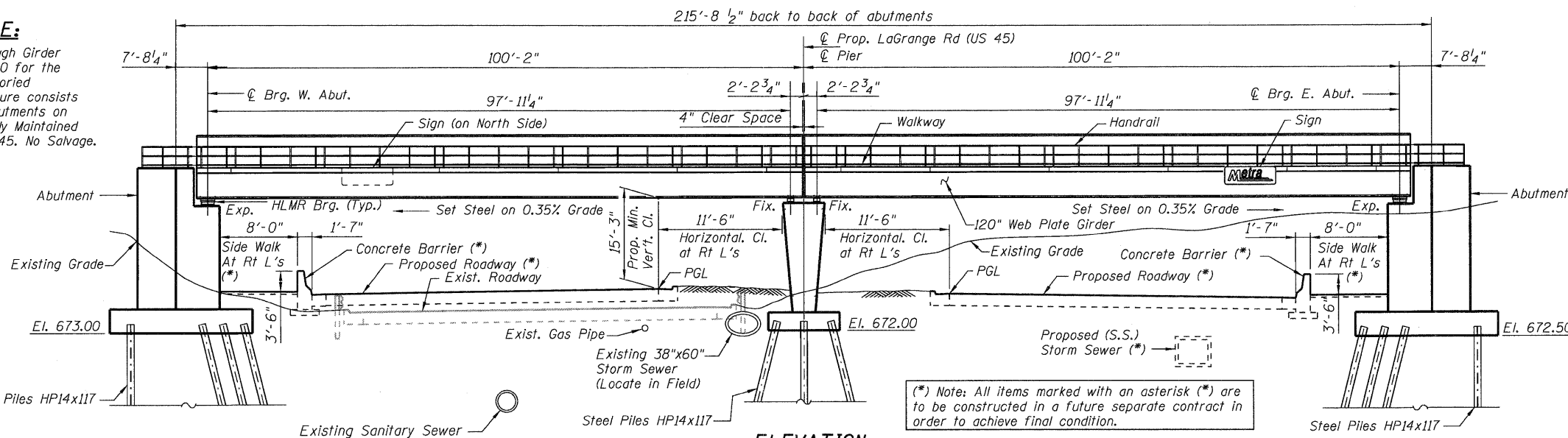
BENCH MARK:

TBM #2 - Elev. 678.745. Chiseled cross on the northeast bolt of west light pole ±60 north of north edge of Southwest Highway Bridge.

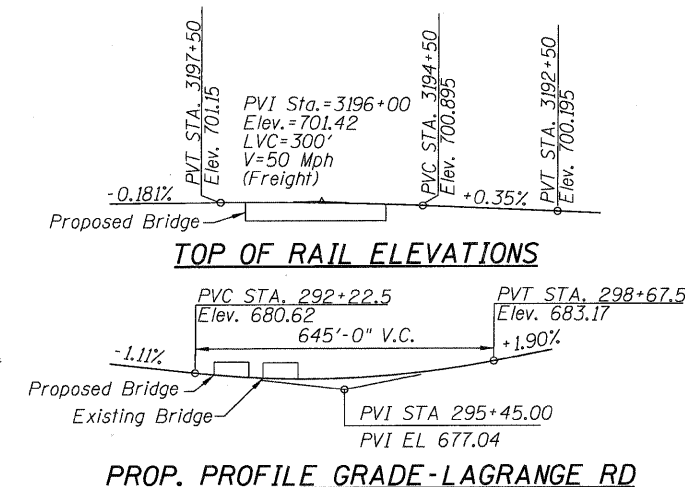
EXISTING STRUCTURE:

89'-3" Simple Span Steel Through Girder R.R. Bridge, Constructed in 1940 for the Wabash Railway Company, inventoried as Bridge No. 1043A. Substructure consists of Concrete Cantilever Type Abutments on Timber Piles. Bridge is Presently Maintained by Metra. Structure No. 016-0345. No Salvage.

STATE OF ILLINOIS
DEPARTMENT OF TRANSPORTATION



ELEVATION



DESIGN SPECIFICATIONS

Specifications for Design and Materials: A.R.E.M.A. Manual for Railway Engineering 2010.

DESIGN LOADING

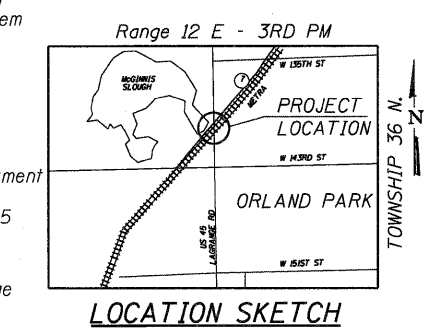
Cooper E-80 with Diesel Impact with Alternate Live Load 30" maximum design ballast. Max. Live Load plus Impact Deflection Criteria L/640 for Railroad Super Structure.

DESIGN STRESSES

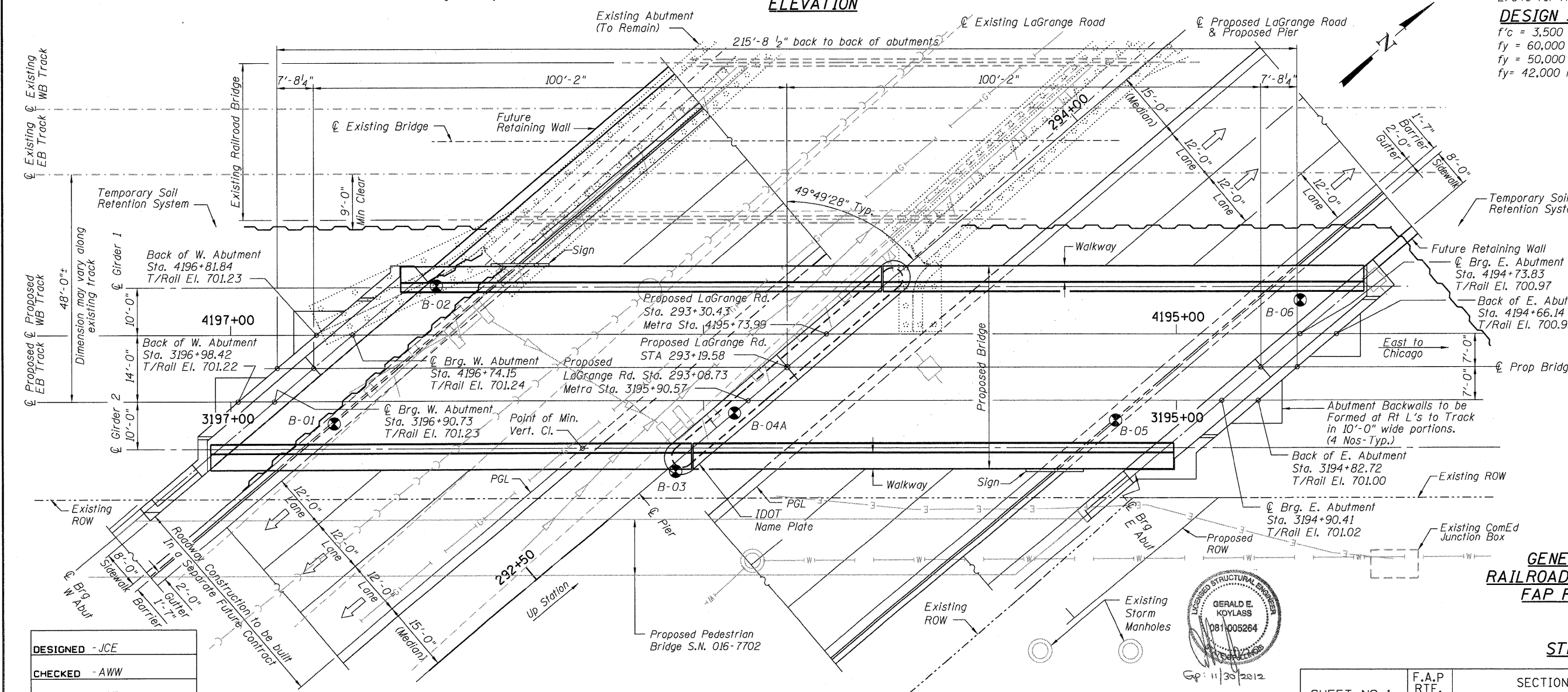
$f'_c = 3,500$ Psi (Concrete)
 $f_y = 60,000$ Psi (Reinforcing Steel)
 $f_y = 50,000$ Psi (ASTM A709 Grade 50 Structural Steel)
 $f_y = 42,000$ Psi (ASTM A572 Grade 42 HLMR Bearings)

LEGEND

- Soil Boring
- Existing Storm Sewer
- Existing Gas Line
- Existing Sanitary
- Existing Water Line



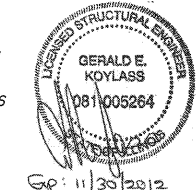
APPROVED
FOR STRUCTURAL ADEQUACY ONLY
[Signature]
ENGINEER OF BRIDGES AND STRUCTURES



PLAN

DESIGNED	- JCE
CHECKED	- AWW
DRAWN	- JCE
CHECKED	- AWW

McDonough Associates Inc.
Engineers / Architects
130 East Randolph Street Chicago, Illinois 60601



SHEET NO. 1 25 SHEETS	F.A.P R.T.E.	SECTION	COUNTY	TOTAL SHEETS	SHEET NO.
	330	73 R-B	COOK	136	53
DATE: 12/17/10		ILLINOIS FED. AID PROJECT			
CONTRACT NO. 60K64					