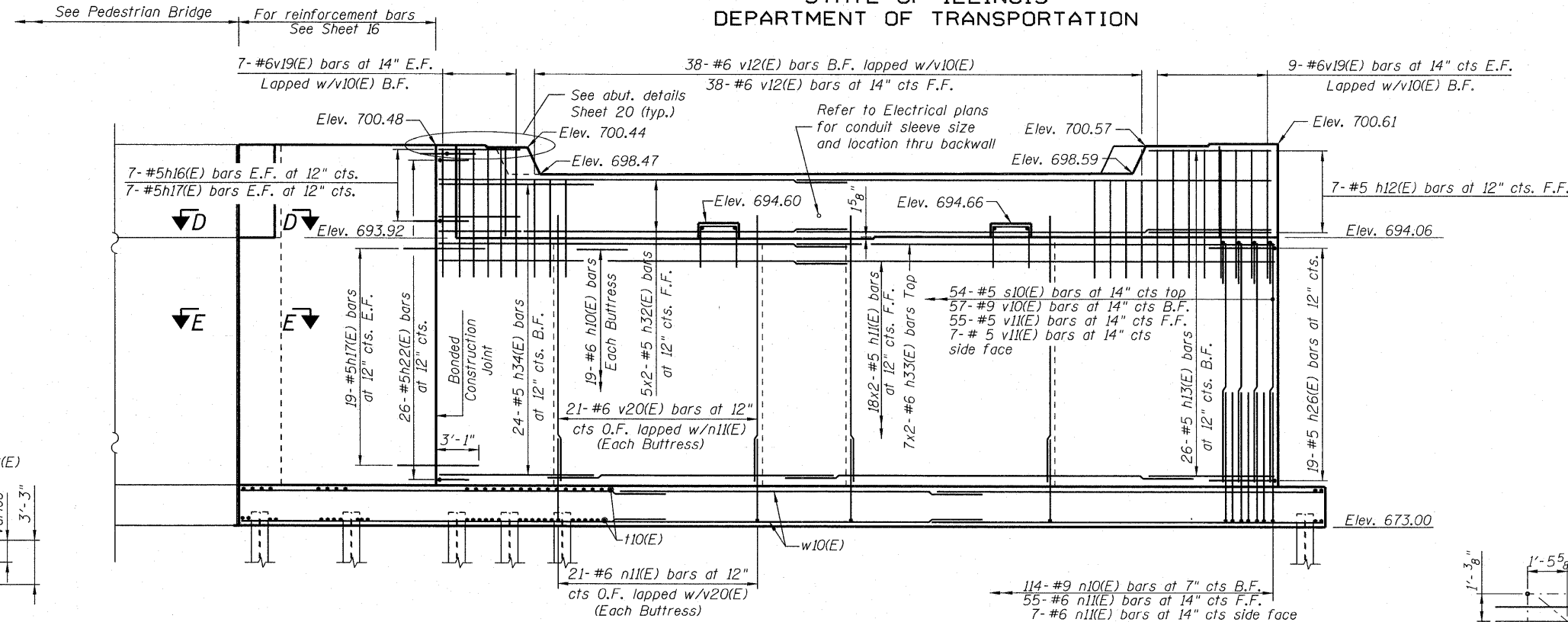
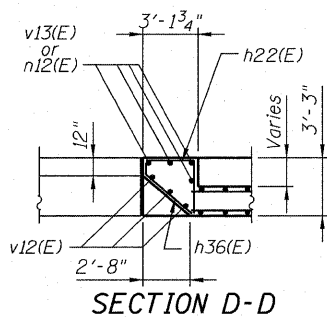


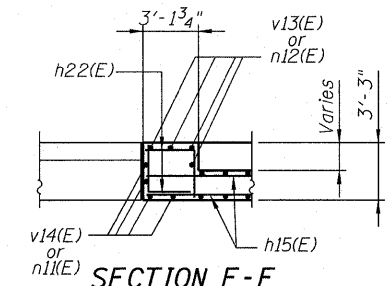
STATE OF ILLINOIS
DEPARTMENT OF TRANSPORTATION



ELEVATION
(Looking West)



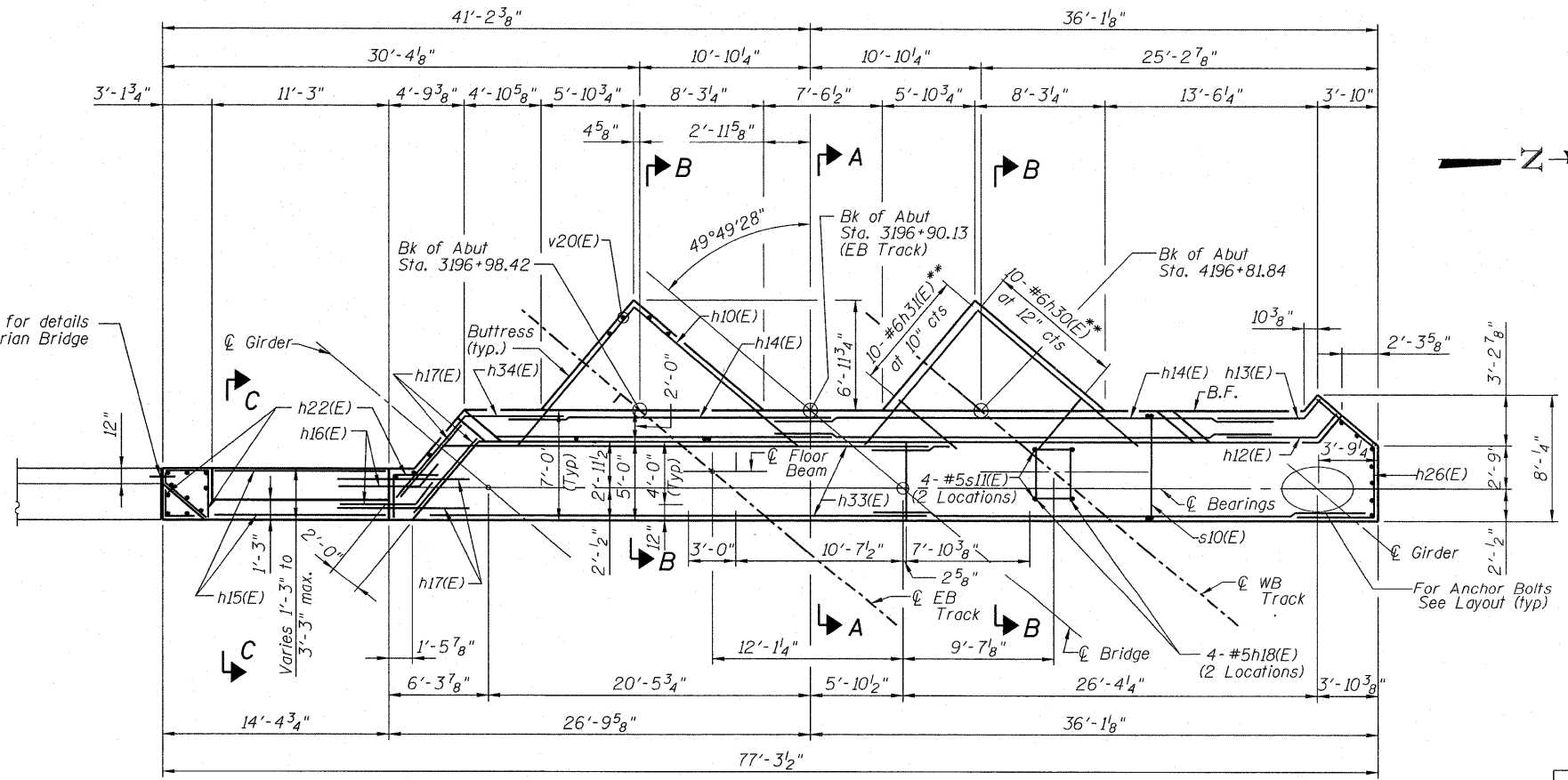
SECTION D-D



SECTION E-E

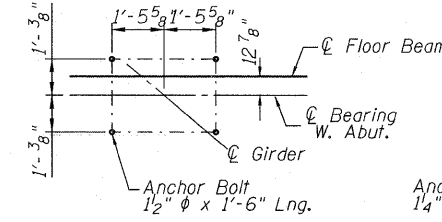
Note: Field cut 4-v14(E) bars as required.

Water Stop for details
See Pedestrian Bridge
plans

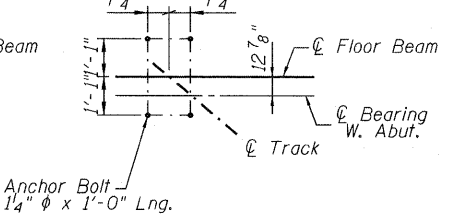


TOP PLAN

** See cutting diagrams.



ANCHOR BOLT LAYOUT
(At Girders)



ANCHOR BOLT LAYOUT
(At End Floor Beams)

MIN. LAP
#5 Top = 2'-11"
#5 Others = 2'-7"
#6 Top = 3'-6"

Notes:
For Sections A-A, B-B & C-C, see Sheet 16.
All Elevations shown are at front face of backwall.

DESIGNED	-JCE
CHECKED	-JCA
DRAWN	-JCE
CHECKED	-JCA

**WEST ABUTMENT PLAN AND ELEVATION
STRUCTURE NO. 016-6201**

SHEET NO. 14 25 SHEETS	F.A.P RTE.	SECTION	COUNTY	TOTAL SHEETS	SHEET NO.
	330	73 R-B	COOK	136	66
DATE: 12/17/10			ILLINOIS FED. AID PROJECT		
CONTRACT NO. 60K64					

McDonough Associates Inc.
Engineers / Architects
130 East Randolph Street Chicago, Illinois 60601