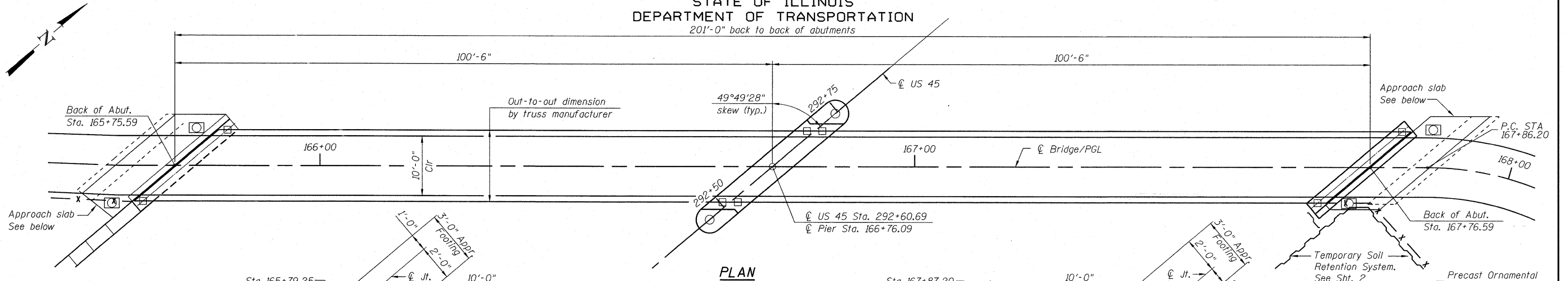
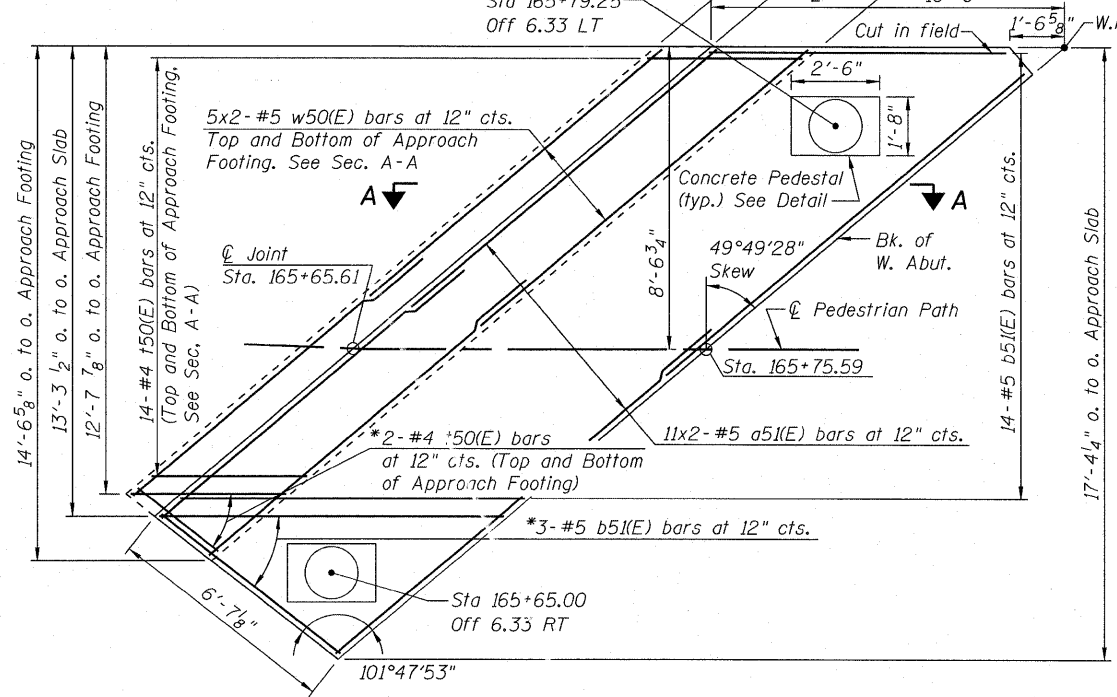


STATE OF ILLINOIS
DEPARTMENT OF TRANSPORTATION
201'-0" back to back of abutments

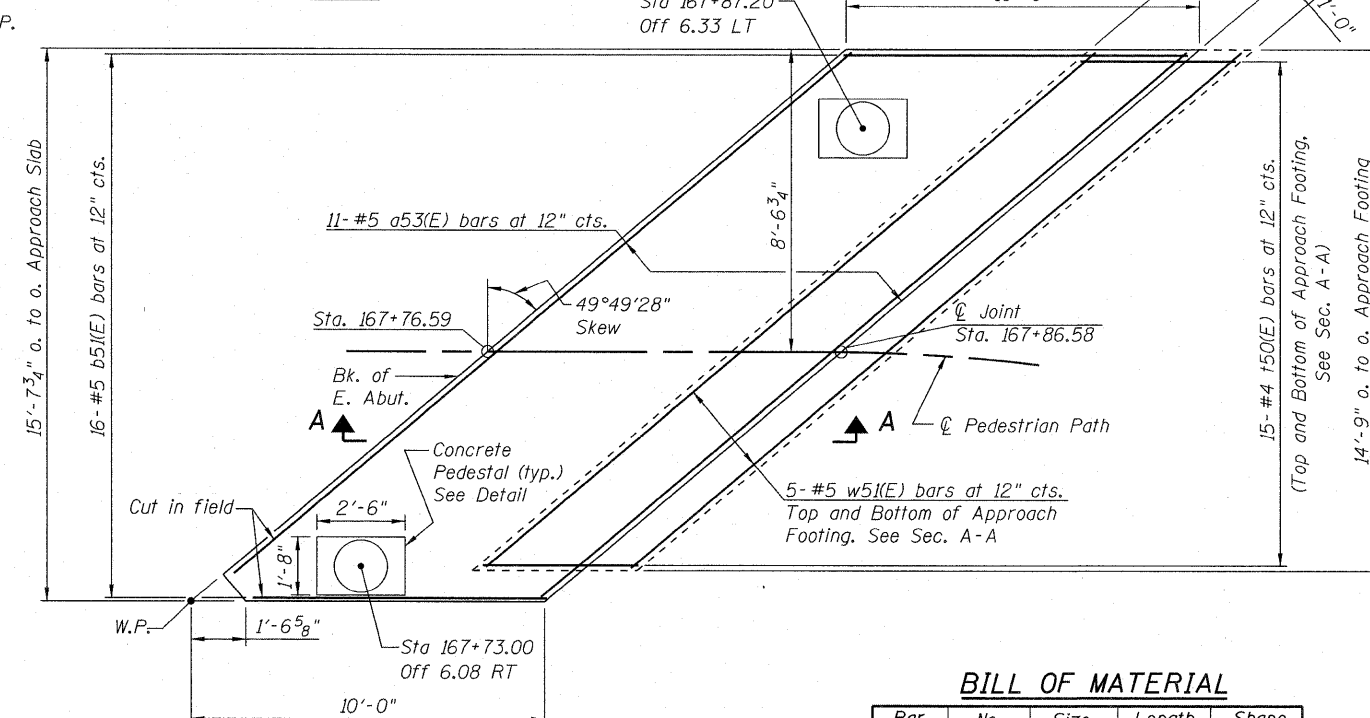


PLAN

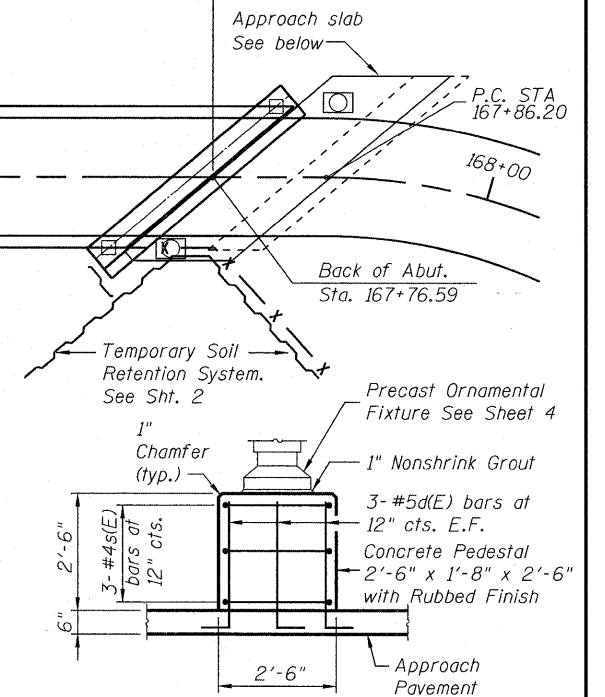


WEST APPROACH

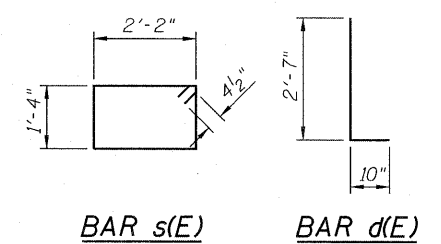
* Fan bars and cut in field to maintain clearance



EAST APPROACH



CONCRETE PEDESTAL DETAIL



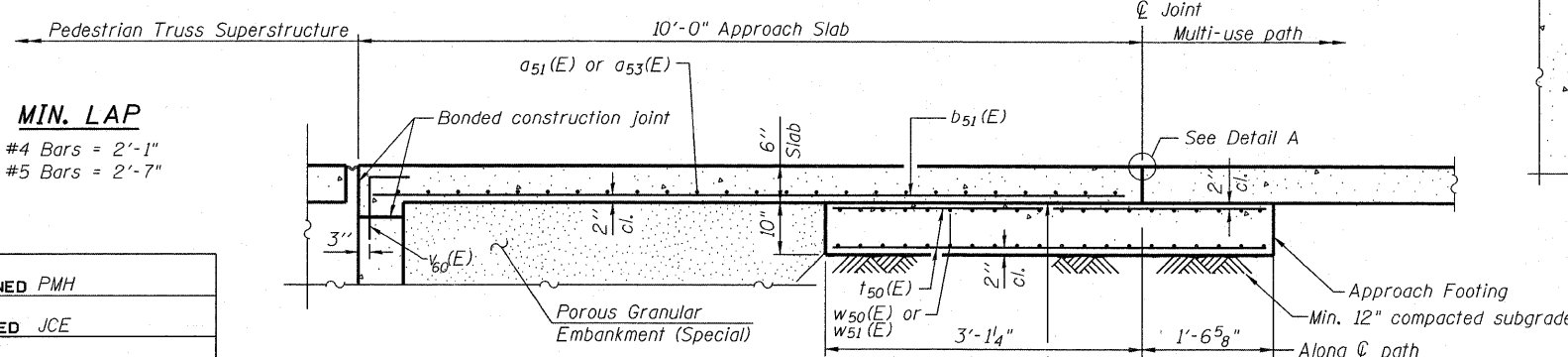
BAR s(E) BAR d(E)

BILL OF MATERIAL

Bar	No.	Size	Length	Shape
a51(E)	22	#5	14'-8"	—
a53(E)	11	#5	26'-2"	—
b51(E)	33	#5	9'-8"	—
d(E)	24	#5	3'-5"	—
s(E)	12	#4	7'-9"	□
t50(E)	62	#4	4'-3"	—
w50(E)	20	#5	12'-6"	—
w51(E)	10	#5	22'-6"	—
Concrete Structures				Cu. Yd. 4.1
Concrete Superstructure				Cu. Yd. 7.3
Reinforcement Bars, Epoxy Coated				Pound 1,790

Notes:
Approach slab and concrete pedestal shall be paid for as Concrete Superstructure.
Approach footing concrete shall be paid for as Concrete Structures.
For v(E) bar details, see sheet 6.
The approach footing maximum applied service bearing pressure (Omax) = 2.0 ksf.
Cost of excavation for approach footing included with Concrete Structures.
For Porous Granular Embankment (Special) and drainage treatment details, see sheet 7.

SUPERSTRUCTURE AND APPROACH PLAN
STRUCTURE NO. 016-7702



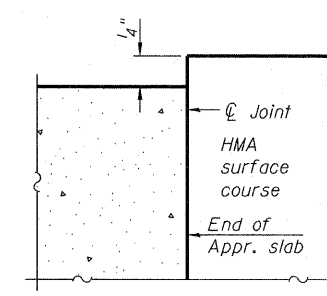
SECTION A-A

*** Cost included with Concrete Superstructure.

MIN. LAP

#4 Bars = 2'-1"
#5 Bars = 2'-7"

DESIGNED	PMH
CHECKED	JCE
DRAWN	PMH
CHECKED	JCE



DETAIL A

McDonough Associates Inc.
Engineers / Architects
130 East Randolph Street Chicago, Illinois 60601

SHEET NO. 3 12 SHEETS	F.A.P. RTE.	SECTION	COUNTY	TOTAL SHEETS	SHEET NO.
	330	73 R-B	COOK	136	80
CONTRACT NO. 60K64					
DATE: 12/17/10		ILLINOIS FED. AID PROJECT			