

Bench Mark: TBM #2 - Elev. 678.745. Chiseled cross on the northeast bolt of west light pole ±60 north of north edge of Southwest Highway Bridge.

Existing Structure: Existing concrete retaining wall on a pile foundation to be incorporated into proposed wall

STATE OF ILLINOIS
DEPARTMENT OF TRANSPORTATION

DESIGN SPECIFICATIONS
2002 AASHTO Standard Specifications
for Highway Bridges

DESIGN STRESSES

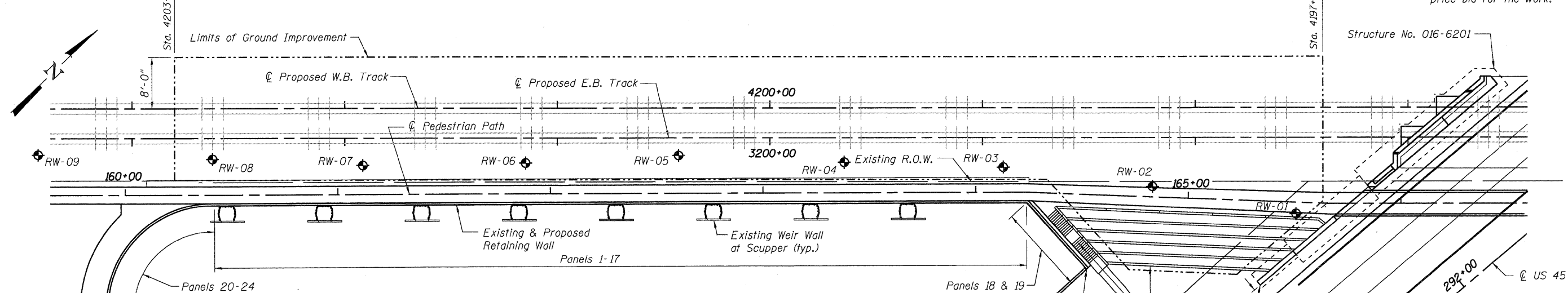
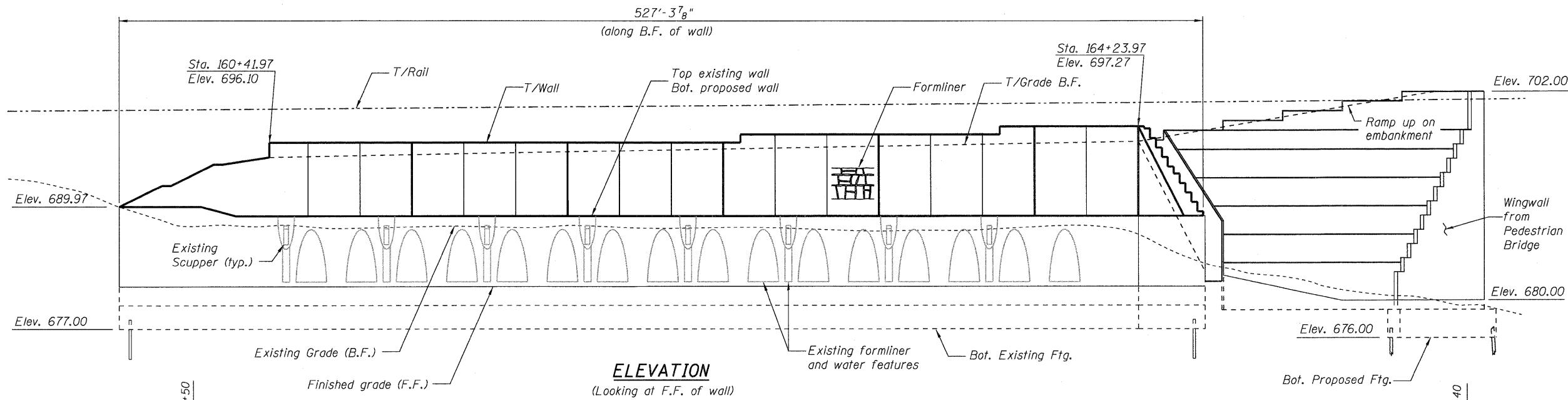
FIELD UNITS
f'c = 4,000 psi
fy = 60,000 psi (Reinforcement)
fy = 36,000 psi (M270 Grade 36)

NOTES

Reinforcement bars shall conform to the requirements of ASTM A 706 Gr 60. See Special Provisions.

Reinforcement bars designated (E) shall be epoxy coated.

Plan dimensions and details relative to existing plans are subject to nominal construction variations. The Contractor shall field verify existing dimensions and details affecting new construction and make necessary approved adjustments prior to construction or ordering of materials. Such variations shall not be cause for additional compensation for a change in scope of the work, however, the Contractor will be paid for the quantity actually furnished at the unit price bid for the work.



LEGEND:

◆ - Soil Boring RW-06

TOTAL BILL OF MATERIAL

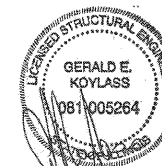
ITEM	UNIT	TOTAL
Concrete Removal	Cu. Yd.	111
Structure Excavation	Cu. Yd.	3,176
Concrete Structures	Cu. Yd.	904.9
Form Liner Textured Surface	Sq. Ft.	3,200
Reinforcement Bars, Epoxy Coated	Pound	86,780
Pedestrian Railing	Foot	280
Pipe Handrail	Foot	64
Furnishing Steel Piles HP12X53	Foot	6,365.0
Driving Piles	Foot	6,365.0
Test Pile Steel HP12X53	Each	6
Geocomposite Wall Drain	Sq. Yd.	809
Pipe Drains 4"	Foot	100
Porous Granular Embankment, Special	Cu. Yd.	1,449
Removing And Re-Erecting Existing Railing	Foot	382
Temporary Sheet Piling	Sq. Ft.	3,212
Pipe Underdrains For Structures 4"	Foot	486
Segmental Block Retaining Wall	Sq. Ft.	2,590
Aggregate Column Ground Improvement	L Sum	1
Remove and Re-Erect Water Feature	L Sum	1

PLAN

INDEX OF SHEETS

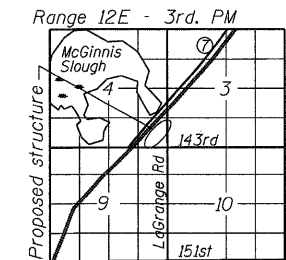
- General Plan and Elevation
- Typical Section
- Plan & Elevation Panels 1-17
- Plan & Elevation Panels 18-19
- Plan & Elevation Panels 20-24
- Plan & Details Panels 20-24
- Tiered Wall & Stair Details
- Sheet Piling
- Ground Improvement
- Architectural Details
- Architectural Details
- Water Feature Revisions
- Existing Water Feature Piping Details
- Existing Water Feature Piping Details
- Existing Water Feature Piping Details
- Existing Water Feature Piping Details
- Existing Water Feature Piping Details
- Existing Water Feature Piping Details
- Soil Boring Logs
- Soil Boring Logs
- Soil Boring Logs
- Soil Boring Logs

DESIGNED	PMH
CHECKED	JCE
DRAWN	AMV
CHECKED	JCE



Exp: 11/30/2012

I certify that to the best of knowledge, information and belief, this retaining wall design is structurally adequate for the design loading shown on the plans. The design is an economical one for the style of structure and complies with requirements of the current AASHTO Standard Specifications for Highway Bridges.



LOCATION SKETCH

APPROVED
FOR STRUCTURAL ADEQUACY ONLY

J. Carl Poyner
ENGINEER OF BRIDGES AND STRUCTURES

GENERAL PLAN & ELEVATION
U.S. ROUTE 45 - LAGRANGE ROAD
F.A.P. RTE. 330 SEC. 73 R-B
COOK COUNTY
STATION 159+91.90 TO 165+64.24

SHEET NO. 1	F.A.P. RTE.	SECTION	COUNTY	TOTAL SHEETS	SHEET NO.
23 SHEETS	330	73 R-B	COOK	136	90
			CONTRACT NO. 60K64		
DATE: 12/17/10		ILLINOIS FED. AID PROJECT			