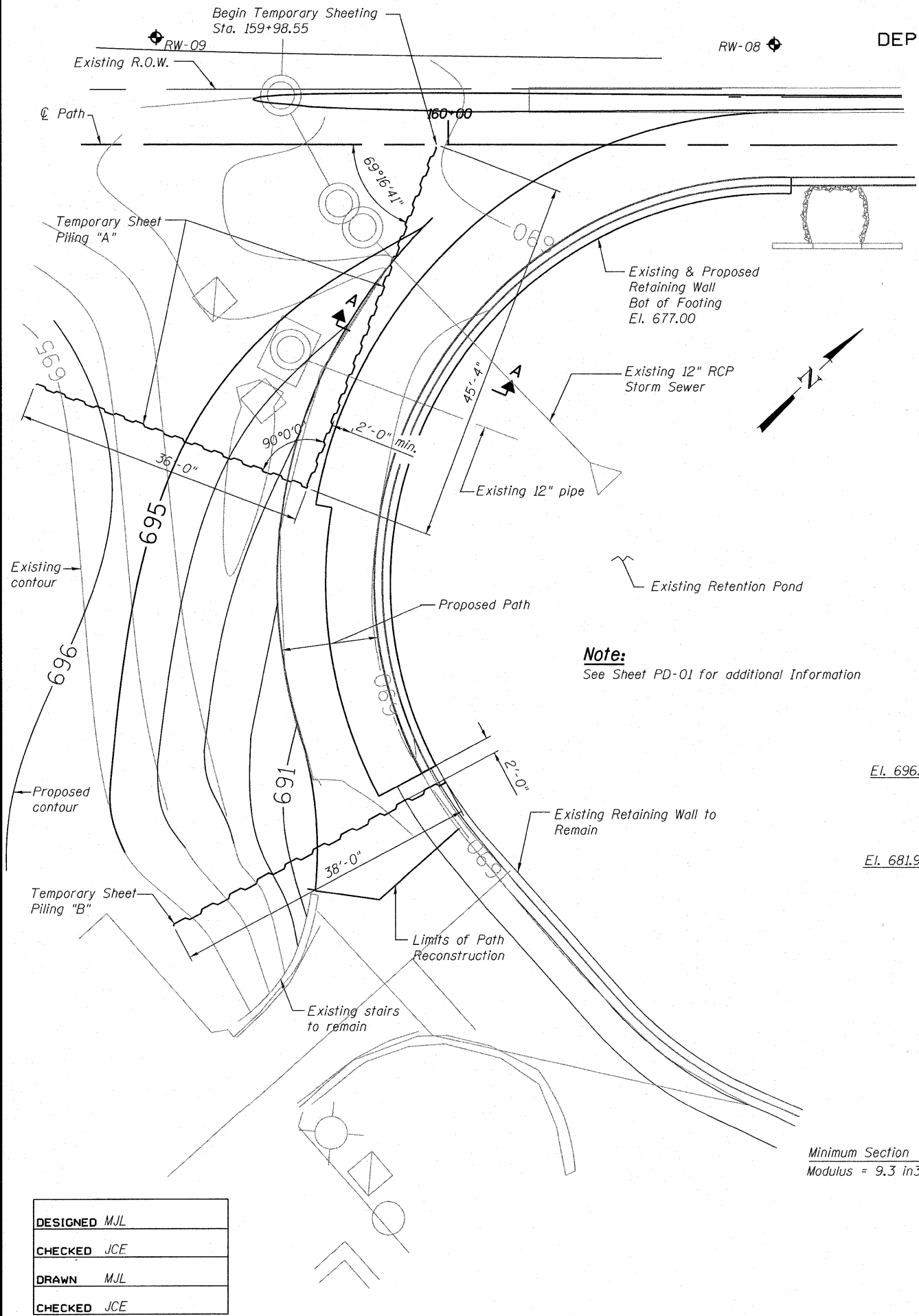
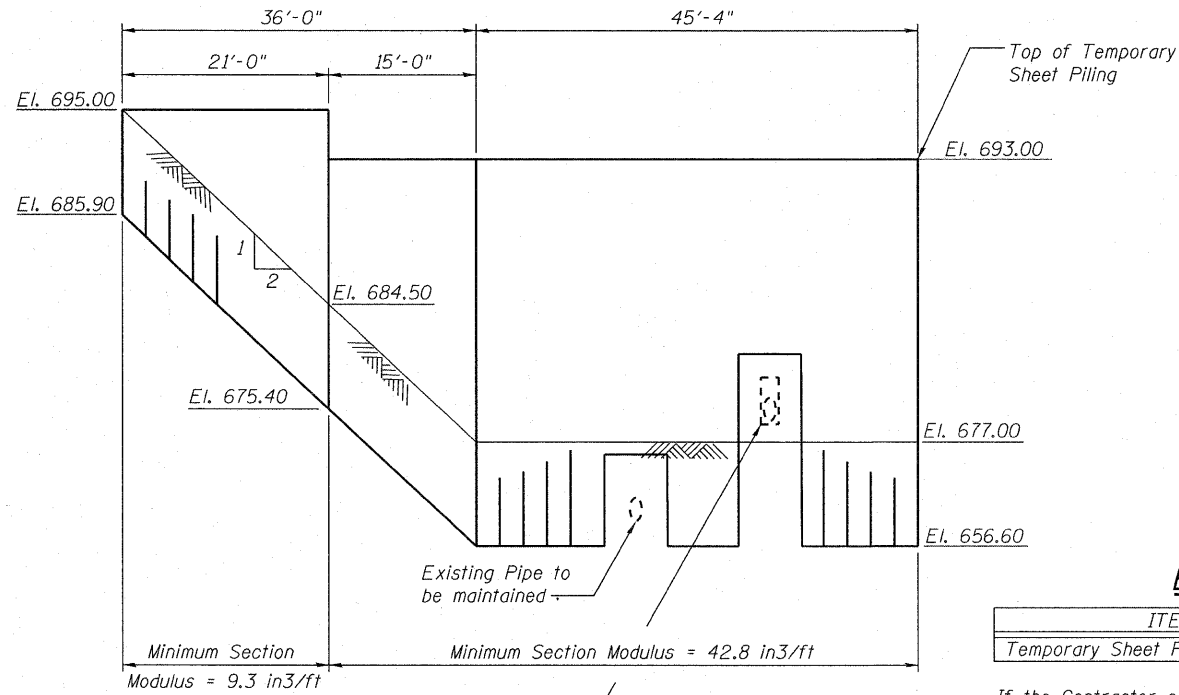


STATE OF ILLINOIS
DEPARTMENT OF TRANSPORTATION



Note:
See Sheet PD-01 for additional information



Contractor to maintain existing 12" RCP storm sewer during construction and provide temporary support as needed. Verify location in field.

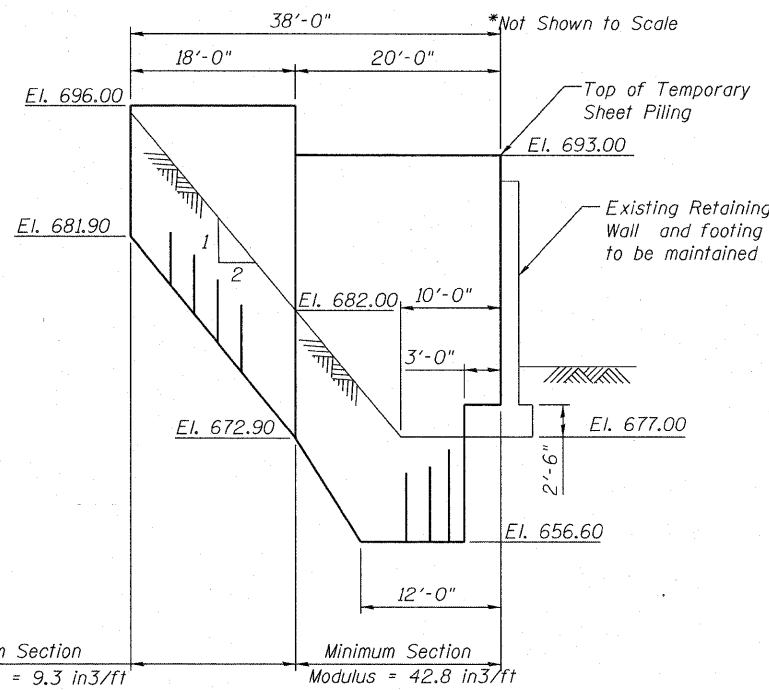
ELEVATION OF TEMPORARY SHEET PILING "A"

BILL OF MATERIAL

ITEM	UNIT	TOTAL
Temporary Sheet Piling	Sq. Ft.	2,822

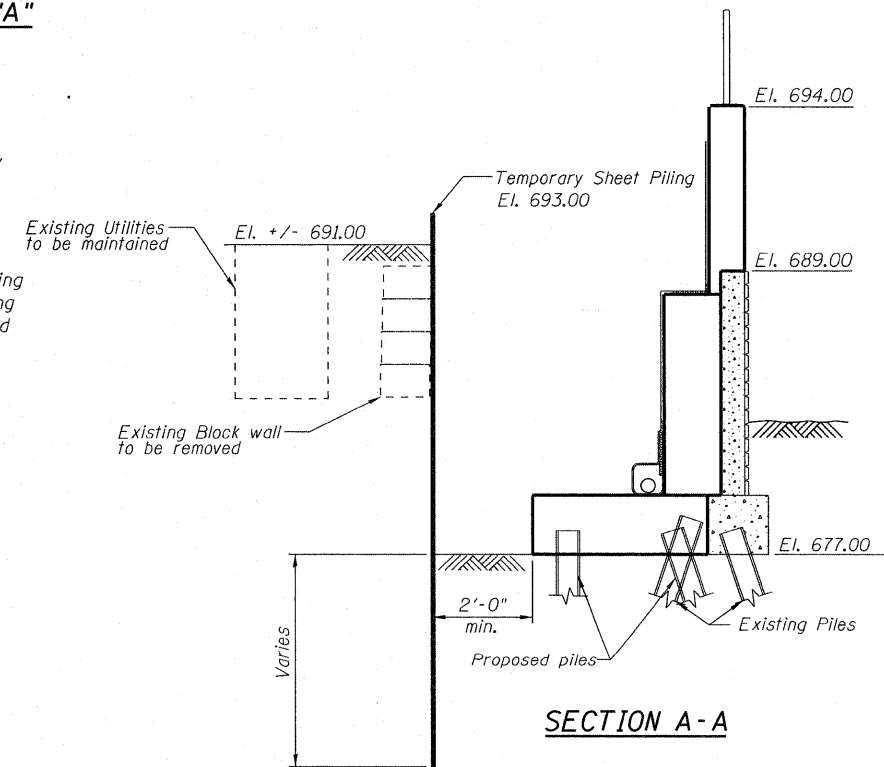
If the Contractor chooses to alter the temporary cantilevered sheet piling design requirements shown on the plans, a design submittal including plan details and calculations will be required for review and acceptance by the Engineer.

The Contractor shall connect the first sheet to the existing wall stem to ensure stability of sheets driven to the top of the existing footing. This connection shall be reviewed and accepted by the Engineer and included in the cost for Temporary Sheet Piling.



ELEVATION OF TEMPORARY SHEET PILING "B"

*Not Shown to Scale



SECTION A-A SHEET PILING

DESIGNED	MJL
CHECKED	JCE
DRAWN	MJL
CHECKED	JCE

McDonough Associates Inc.
Engineers / Architects
130 East Randolph Street Chicago, Illinois 60601

SHEET NO. 8 23 SHEETS	F.A.P. RTE.	SECTION	COUNTY	TOTAL SHEETS	SHEET NO.
	330	73 R-B	COOK	136	97
DATE: 12/17/10			ILLINOIS FED. AID PROJECT		
CONTRACT NO. 60K64					