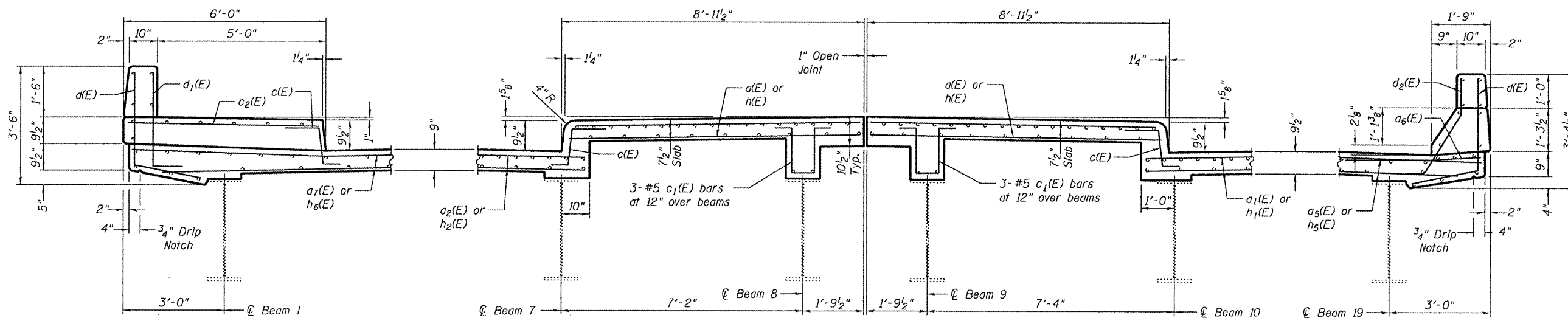


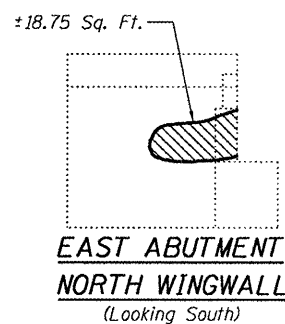
STAGING DECK CROSS-SECTION
(At East Abutment)
(Looking East)



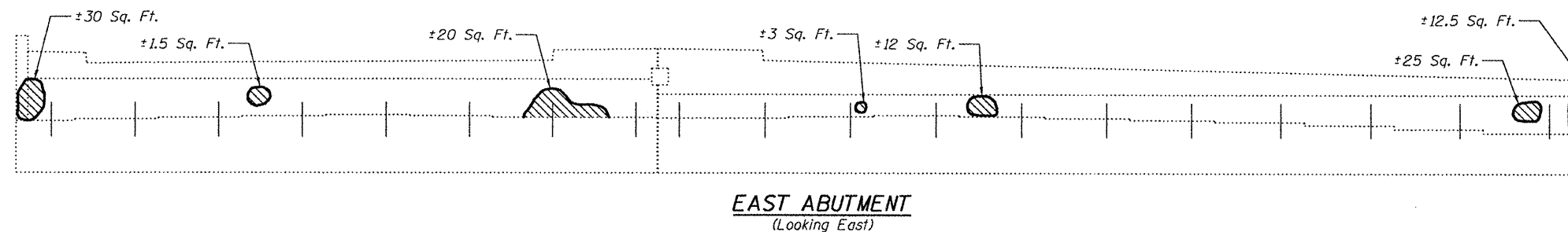
TYPICAL SIDEWALK SECTION ON NORTH SIDE

TYPICAL MEDIAN SECTION

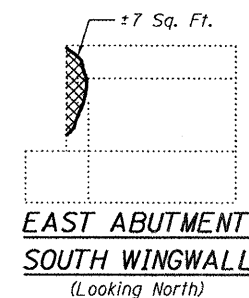
TYPICAL PARAPET SECTION ON SOUTH SIDE



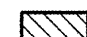

EAST ABUTMENT NORTH WINGWALL
(Looking South)



EAST ABUTMENT
(Looking East)



EAST ABUTMENT SOUTH WINGWALL
(Looking North)

 Structural Repair of Concrete (Depth ≤ 5")
 Structural Repair of Concrete (Depth > 5")

DESIGNED - I.J.L.	EXAMINED - <i>Carl Perry</i>
CHECKED - A.T.H.	ENGINEER OF STRUCTURAL SERVICES
DRAWN - Drew Christopher	PASSED - <i>Ralph E. Anderson</i>
CHECKED - I.J.L. A.T.H.	ENGINEER OF BRIDGES AND STRUCTURES

DATE - --

STATE OF ILLINOIS
DEPARTMENT OF TRANSPORTATION

EAST ABUTMENT DETAILS
SN 072-0134

SHEET NO. 2 OF 6 SHEETS

F.A.P. RTE. 317	SECTION (48B)I	COUNTY Peoria	TOTAL SHEETS 28	SHEET NO. 28B
CONTRACT NO. ---			ILLINOIS FED. AID PROJECT	

SLT-94-001-10