



MATCHLINE STA. 260+00



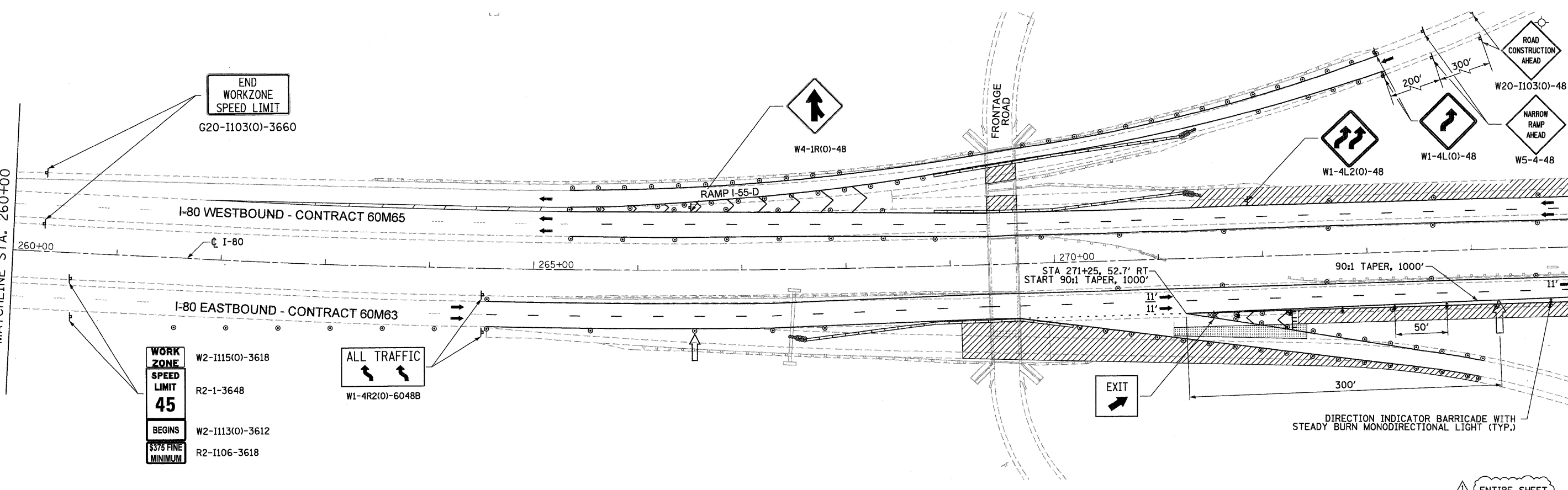
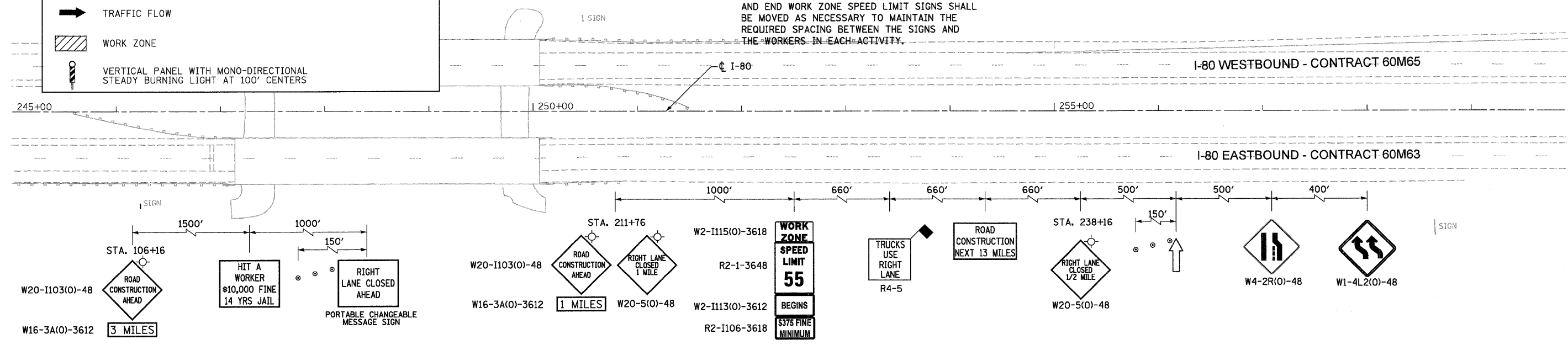
MATCHLINE STA. 275+00

NOTES

1. ALL EASTBOUND WORK IS IN CONTRACT 60M63 AND ALL WESTBOUND WORK IS IN CONTRACT 60M65.
2. CONSTRUCTION SIGNS AND TEMPORARY PAVEMENT MARKINGS INSTALLED PER STAGE 1.
3. IDOT STANDARD 701400-05 SHALL BE FOLLOWED FOR CONSTRUCTION SIGNING PRIOR TO TAPER.
4. THE CONTRACTOR AT NO TIME SHALL CLOSE LANE 2 OF STAGED CONSTRUCTION AND SHALL NOT RESTRICT ACCESS TO OR FROM I-55.
5. ADVANCED SIGNING, WORK ZONE SPEED LIMIT SIGNS AND END WORK ZONE SPEED LIMIT SIGNS SHALL BE MOVED AS NECESSARY TO MAINTAIN THE REQUIRED SPACING BETWEEN THE SIGNS AND THE WORKERS IN EACH ACTIVITY.

**LEGEND:**

- TRAFFIC CONTROL SIGN
- ARROW BOARD
- TYPE II BARRICADE OR DRUM WITH MONO-DIRECTIONAL STEADY BURNING LIGHT @ 100 FT C-C ALONG ROADWAY (TANGENT), 50 FT CENTERS ALONG TAPERS AND 25 FT CENTERS ALONG RAMPS
- TRAFFIC FLOW
- WORK ZONE
- VERTICAL PANEL WITH MONO-DIRECTIONAL STEADY BURNING LIGHT AT 100' CENTERS



ENTIRE SHEET

DESIGNED - LLS/JG	REVISION 02/15/11 ADDENDUM A
DRAWN - PMS/DC	REVISION -
CHECKED - JAL	REVISION -
DATE - 01/21/2011	REVISION -



STATE OF ILLINOIS DEPARTMENT OF TRANSPORTATION

MAINTENANCE OF TRAFFIC - WEEKEND LANE CLOSURE DETAIL I-80 MAINLINE

F.A.I. RTE.	SECTION	COUNTY	TOTAL SHEETS	SHEET NO.
80	99-1-RS-4	WILL	116	39
CONTRACT NO. 60M63				